

ADORA1 Polyclonal Antibody

Product Details

Size	100 µL
Species Reactivity	Human, Rat
Published Species	Rat, Mouse
Host/Isotype	Rabbit / IgG
Class	Polyclonal
Type	Antibody
Conjugate	Unconjugated
Immunogen	Synthetic peptide corresponding to residues C(309) Q P K P P I D E D L P E E K A E D(326) of rat Adenosine Receptor A1.
Form	Liquid
Concentration	1 mg/mL
Purification	Antigen affinity chromatography
Storage buffer	PBS with 1mg/mL BSA
Contains	0.05% sodium azide
Storage conditions	-20° C, Avoid Freeze/Thaw Cycles
RRID	AB_2222233

Applications	Tested Dilution	Publications
Western Blot (WB)	1:500	3 Publications
Immunohistochemistry (IHC)	-	1 Publication
Immunohistochemistry (Paraffin) (IHC (P))	1:50-1:200	-
Immunocytochemistry (ICC/IF)	2 µg/mL	-

Product Specific Information

PA1-041A detects adenosine receptor A1 (A1AR) in rat tissues. This antibody does not detect other AR subtypes. Previous lots of this antibody have been used in human and bovine samples.

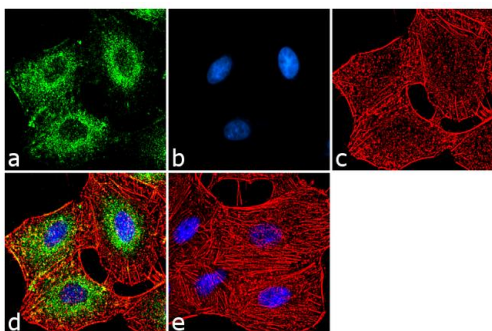
PA1-041A has been successfully used in Immunohistochemistry (paraffin) and Western blot procedures. By Western blot, this antibody detects an ~37 kDa protein in rat brain representing A1AR.

The PA1-041A immunogen is a synthetic peptide corresponding to residues C(309) Q P K P P I D E D L P E E K A E D(326) of rat Adenosine Receptor A1.

Product Images For ADORA1 Polyclonal Antibody

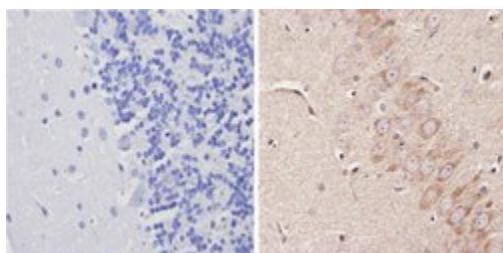
ADORA1 Antibody (PA1-041A) in ICC/IF

Immunofluorescence analysis of Adenosine Receptor A1 was done on 70% confluent log phase HeLa cells. The cells were fixed with 4% paraformaldehyde for 10 minutes, permeabilized with 0.1% Triton™ X-100 for 10 minutes, and blocked with 1% BSA for 1 hour at room temperature. The cells were labeled with Adenosine Receptor A1 Rabbit Polyclonal Antibody (Product # PA1-041A) at 2 µg/mL in 0.1% BSA and incubated for 3 hours at room temperature and then labeled with Goat anti-Rabbit IgG (H+L) Superclonal™ Secondary Antibody, Alexa Fluor® 488 conjugate (Product # A27034) at a dilution of 1:2000 for 45 minutes at room temperature (Panel a: green). Nuclei (Panel b: blue) were stained with SlowFade® Gold Antifade Mountant with DAPI (Product # S36938). F-actin (Panel c: red) was stained with Alexa Fluor® 555 Rhodamine Phalloidin (Product # R415, 1:300). Panel d is a merged image showing cytoplasmic localization. Panel e is a no primary antibody control. The images were captured at 60X magnification.



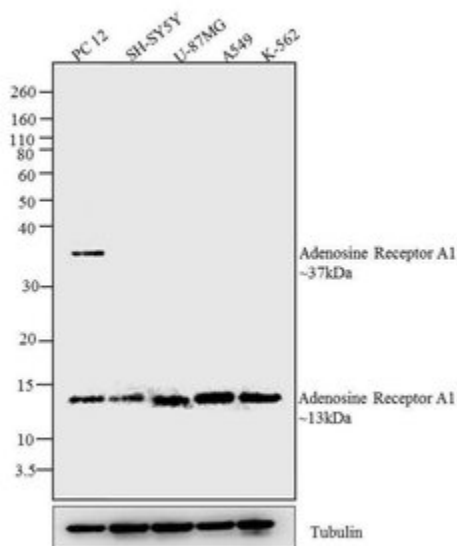
ADORA1 Antibody (PA1-041A) in IHC (P)

Immunohistochemistry analysis of Adenosine Receptor A1 showing positive staining in the cytoplasm of paraffin-treated Rat brain tissue (right) compared with a negative control in the absence of primary antibody (left). To expose target proteins, antigen retrieval method was performed using 10mM sodium citrate (pH 6.0) microwaved for 8-15 min. Following antigen retrieval, tissues were blocked in 3% H₂O₂-methanol for 15 min at room temperature, washed with ddH₂O and PBS, and then probed with a Adenosine Receptor A1 polyclonal antibody (Product # PA1-041A) diluted by 3% BSA-PBS at a dilution of 1:100 overnight at 4°C in a humidified chamber. Tissues were washed extensively PBST and detection was performed using an HRP-conjugated secondary antibody followed by colorimetric detection using a DAB kit. Tissues were counterstained with hematoxylin and dehydrated with ethanol and xylene to prep for mounting.



ADORA1 Antibody (PA1-041A) in WB

Western blot analysis was performed on whole cell extracts (30 µg lysate) of PC 12 (Lane 1), SH-SY5Y (lane 2), U-87MG (lane 3), A549 (Lane 4) and K-562 (lane 5). The blots were probed with Anti-Adenosine receptor A1 Rabbit Polyclonal Antibody (Product # PA1-041A, 1:250-1:1000 dilution) and detected by chemiluminescence Goat Anti-Rabbit IgG Secondary Antibody, HRP conjugate (Product # G-21234, 1:5000 dilution). Two bands 37 and 13 kDa band corresponding to Adenosine receptor A1 was observed across cell lines tested. Known quantity of protein samples were electrophoresed using Novex® NuPAGE® 12 % Bis-Tris gel (Product # NP0342BOX), XCell SureLock™ Electrophoresis System (Product # EI0002) and Novex® Sharp Pre-Stained Protein Standard (Product # LC5800). Resolved proteins were then transferred onto a nitrocellulose membrane with iBlot® 2 Dry Blotting System (Product # IB21001). The membrane was probed with the relevant primary and secondary Antibody following blocking with 5 % skimmed milk. Chemiluminescent detection was performed using Pierce™ ECL Western Blotting Substrate (Product # 32106).



4 References

Western Blot (3)

Journal of neurosurgery

Attenuation of cerebral vasospasm and secondary injury by 17beta-estradiol following experimental subarachnoid hemorrhage.

"PA1-041A was used in western blot to study the effect of 17beta-estradiol on cerebral vasospasm and secondary injury after subarachnoid hemorrhage"

Authors: Lin CL,Dumont AS,Su YF,Tsai YJ,Huang JH,Chang KP,Howng SL,Kwan AL,Kassell NF,Kao CH

Species
Rat

Dilution
1:500

Year
2009

Cell cycle (Georgetown, Tex.)

Cell cycle-dependent regulation of SFK, JAK1 and STAT3 signalling by the protein tyrosine phosphatase TCPTP.

"PA1-041A was used in western blot to study the effect of protein tyrosine phosphatase on SFK, JAK1 and STAT3 signalling"

Authors: Shields BJ,Court NW,Hauser C,Bukczynska PE,Tiganis T

Species
Mouse

Dilution
Not Cited

Year
2008

[View more WB references on thermofisher.com](#)

Immunohistochemistry (1)

Experimental neurology

Neonatal caffeine treatment up-regulates adenosine receptors in brainstem and hypothalamic cardio-respiratory related nuclei of rat pups.

"PA1-041A was used in immunohistochemistry to study the effect of neonatal caffeine treatment on the brainstem and hypothalamic cardio-respiratory related nuclei of rat pups"

Authors: Gaytan SP,Pasaro R

Species
Rat

Dilution
1:200

Year
2012

For Research Use Only. Not for use in diagnostic procedures. Not for resale without express authorization. Products are warranted to operate or perform substantially in conformance with published Product specifications in effect at the time of sale, as set forth in the Production documentation, specifications and/or accompanying package inserts ("Documentation"). No claim of suitability for use in applications regulated by FDA is made. The warranty provided herein is valid only when used by properly trained individuals. Unless otherwise stated in the Documentation, this warranty is limited to one year from date of shipment when the Product is subjected to normal, proper and intended usage. This warranty does not extend to anyone other than the Buyer. Any model or sample furnished to Buyer is merely illustrative of the general type and quality of goods and does not represent that any Product will conform to such model or sample. NO OTHER WARRANTIES, EXPRESS OR IMPLIED, ARE GRANTED INCLUDING WITHOUT LIMITATION, IMPLIED WARRANTIES OF MERCHANTABILITY, FITNESS FOR ANY PARTICULAR PURPOSE, OR NON INFRINGEMENT. BUYER'S EXCLUSIVE REMEDY FOR NON-CONFORMING PRODUCTS DURING THE WARRANTY PERIOD IS LIMITED TO REPAIR, REPLACEMENT OF OR REFUND FOR THE NON-CONFORMING PRODUCT(S) AT SELLER'S SOLE OPTION. THERE IS NO OBLIGATION TO REPAIR, REPLACE OR REFUND FOR PRODUCTS AS THE RESULT OF (I) ACCIDENT, DISASTER OR EVENT OF FORCE MAJEURE, (II) MISUSE, FAULT OR NEGLIGENCE OF OR BY BUYER, (III) USE OF THE PRODUCTS IN A MANNER FOR WHICH THEY WERE NOT DESIGNED, OR (IV) IMPROPER STORAGE AND HANDLING OF THE PRODUCTS. Unless otherwise expressly stated on the Product or in the documentation accompanying the Product, the Product is intended for research only and is not to be used for any other purpose, including without limitation, unauthorized commercial uses, in vitro diagnostic uses, ex vivo or in vivo therapeutic uses, or any type of consumption by or application to human or animals.