

CETP Polyclonal Antibody

Product Details	
Size	100 µg
Species Reactivity	Human
Published Species	Human
Host/Isotype	Rabbit / IgG
Class	Polyclonal
Type	Antibody
Conjugate	Unconjugated
Immunogen	Synthetic peptide corresponding to residues C D(149) S G R V R T D A P D(159) of human CETP protein.
Form	Liquid
Concentration	1 mg/mL
Purification	Antigen affinity chromatography
Storage buffer	PBS with 1mg/mL BSA
Contains	0.05% sodium azide
Storage conditions	-20° C, Avoid Freeze/Thaw Cycles
RRID	AB_325072

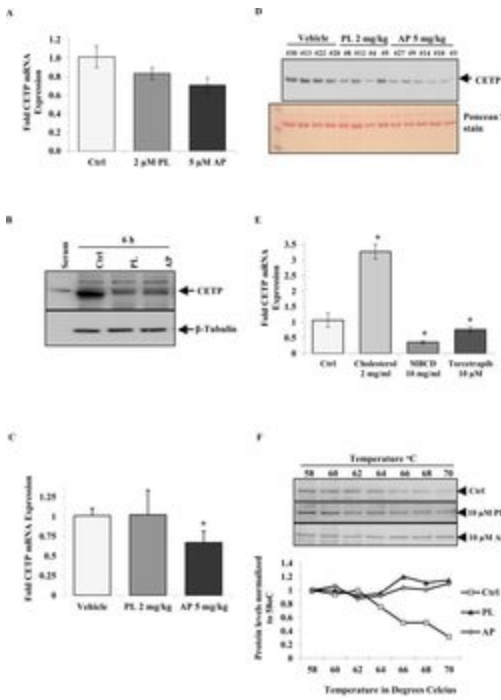
Applications	Tested Dilution	Publications
Western Blot (WB)	2 µg/mL	1 Publication

Product Specific Information

PA1-050 detects cholesteryl ester transfer protein (CETP) from human tissues.

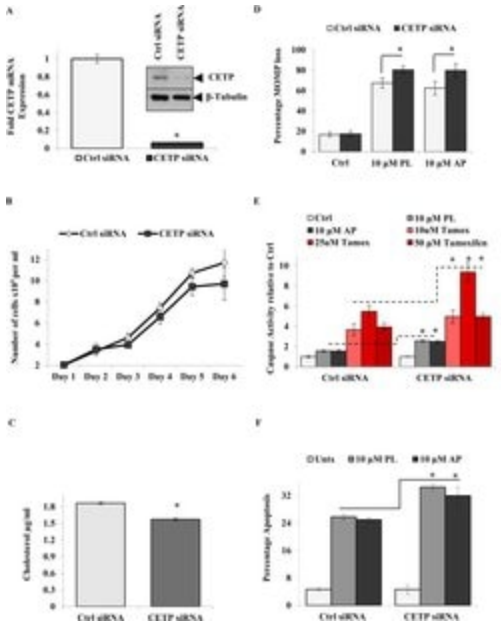
PA1-050 has been successfully used in Western blot procedures. By Western blot, this antibody detects an ~70 kDa band from human liver extracts representing CETP.

The PA1-050 immunogen is a synthetic peptide corresponding to residues C D(149) S G R V R T D A P D(159) of human CETP protein. This peptide (Cat. # PEP-209) is available for use in neutralization and control experiments.



CETP Antibody (PA1-050)

Figure 3 CETP expression is altered in response to cholesterol modulation Levels of (A) CETP mRNA in MCF-7 cells treated for 5 days with 2 μM PL and 5 μM AP and CETP protein levels when treated with 10 μM PL and AP for 6 h (B). CETP mRNA expression in tumour samples (C) and CETP protein levels in mice serum samples (D) after 21 days treatment with PL (2 mg/kg) and AP (5 mg/kg). (E) MCF-7 cells treated with 2 mg/ml Cholesterol, 10 mg/ml MBCD and 10 μM Torcetrapib for 48 h. Data shown (C and E) are mean ± SD of quadruplicate wells of three independent pooled experiments (P ≤ 0.05, t-test). Comparison of CETP protein stability in Ctrl and PL or AP-treated MCF-7 cells during cellular thermal shift analysis. Data shown are representative of three independent experiments (F). Cell treatment validation info.

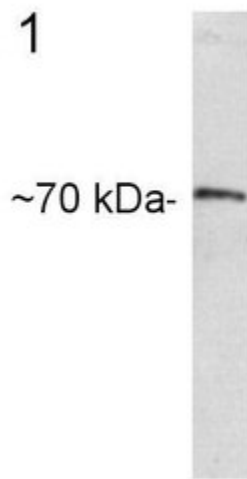


CETP Antibody (PA1-050)

CETP contributes to cancer cell growth and survival and is upregulated in breast cancer patients (A) CETP gene silencing by siRNA and western blot analysis of CETP protein expression in CETP siRNA cells. (B) Effect of CETP mRNA silencing on growth of MCF-7 cells as measured by cell counting over a period of six days. (C) Comparison of cholesterol levels in the MCF-7 control (ctrl) siRNA and CETP knockout cells. Data shown are the mean ± SD of quadruplicate wells/condition in three independent experiments (n = 3) (P ≤ 0.05, t-test). (D) The effect of 10 M PL or AP treatment on MOMP; (E) Caspase-3/7 activity (10, 25 and 50 M Tamoxifen was used as a positive control); and (F) apoptosis in MCF-7 ctrl siRNA and CETP siRNA knockout cells. Data shown are representative of the mean ± SD of quadruplicate wells/condition in at least two independent experiments (n=2) (*P ≤ 0.05, t-test). Knockdown validation info.

Product Images For CETP Polyclonal Antibody

Fig. 1



CETP Antibody (PA1-050) in WB

Western blot detection of CETP from rat liver extract using Product # PA1-050.

[View more figures on thermofisher.com](#)

1 Reference

Western Blot (1)

Genes & cancer

Identification of *CETP* as a molecular target for estrogen positive breast cancer cell death by cholesterol depleting agents.

"PA1-050 was used in western blot to investigate cholesteryl ester transfer protein as a therapeutic target for breast cancer"

Authors: Esau L,Sagar S,Bangarusamy D,Kaur M

Species
Human

Dilution
1:500

Year
2016

For Research Use Only. Not for use in diagnostic procedures. Not for resale without express authorization. Products are warranted to operate or perform substantially in conformance with published Product specifications in effect at the time of sale, as set forth in the Production documentation, specifications and/or accompanying package inserts ("Documentation"). No claim of suitability for use in applications regulated by FDA is made. The warranty provided herein is valid only when used by properly trained individuals. Unless otherwise stated in the Documentation, this warranty is limited to one year from date of shipment when the Product is subjected to normal, proper and intended usage. This warranty does not extend to anyone other than the Buyer. Any model or sample furnished to Buyer is merely illustrative of the general type and quality of goods and does not represent that any Product will conform to such model or sample. NO OTHER WARRANTIES, EXPRESS OR IMPLIED, ARE GRANTED INCLUDING WITHOUT LIMITATION, IMPLIED WARRANTIES OF MERCHANTABILITY, FITNESS FOR ANY PARTICULAR PURPOSE, OR NON INFRINGEMENT. BUYER'S EXCLUSIVE REMEDY FOR NON-CONFORMING PRODUCTS DURING THE WARRANTY PERIOD IS LIMITED TO REPAIR, REPLACEMENT OF OR REFUND FOR THE NON-CONFORMING PRODUCT(S) AT SELLER'S SOLE OPTION. THERE IS NO OBLIGATION TO REPAIR, REPLACE OR REFUND FOR PRODUCTS AS THE RESULT OF (I) ACCIDENT, DISASTER OR EVENT OF FORCE MAJEURE, (II) MISUSE, FAULT OR NEGLIGENCE OF OR BY BUYER, (III) USE OF THE PRODUCTS IN A MANNER FOR WHICH THEY WERE NOT DESIGNED, OR (IV) IMPROPER STORAGE AND HANDLING OF THE PRODUCTS. Unless otherwise expressly stated on the Product or in the documentation accompanying the Product, the Product is intended for research only and is not to be used for any other purpose, including without limitation, unauthorized commercial uses, in vitro diagnostic uses, ex vivo or in vivo therapeutic uses, or any type of consumption by or application to human or animals.