

Leptin Polyclonal Antibody

Product Details

Size	100 µL
Species Reactivity	Human, Mouse, Pig
Published Species	Pig, Sheep, Human, Mouse
Host/Isotope	Rabbit / IgG
Class	Polyclonal
Type	Antibody
Conjugate	Unconjugated
Immunogen	Synthetic peptide corresponding to residues S(91) R N V I Q I S N D L E N L R D(106) of human Leptin.
Form	Liquid
Purification	Ammonium sulfate precipitation
Storage buffer	PBS
Contains	0.05% sodium azide
Storage Conditions	-20° C, Avoid Freeze/Thaw Cycles
RRID	AB_325787

Applications	Tested Dilution	Publications
Immunocytochemistry (ICC)	1:20-1:200	2 Publications
Immunofluorescence (IF)	1:20-1:200	1 Publication
Western Blot (WB)	1:500-1:5000	6 Publications
Immunohistochemistry (IHC)	-	1 Publication
Immunohistochemistry (Paraffin) (IHC (P))	-	2 Publications

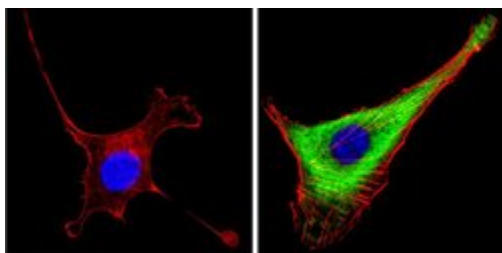
Product Specific Information

PA1-052 detects leptin from human, mouse, and porcine samples.

PA1-052 has been successfully used in Western blot and ICC/IF procedures. By Western blot, this antibody detects an ~16 kDa protein representing leptin from human serum.

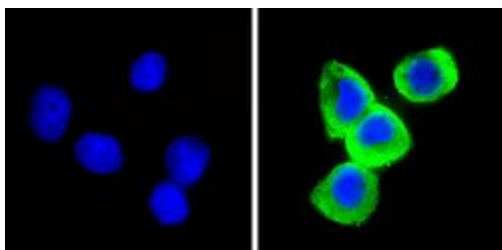
The PA1-052 immunogen is a synthetic peptide corresponding to residues S(91) R N V I Q I S N D L E N L R D(106) of human Leptin. This sequence is 94% conserved between human and bovine.

Product Images For Leptin Polyclonal Antibody



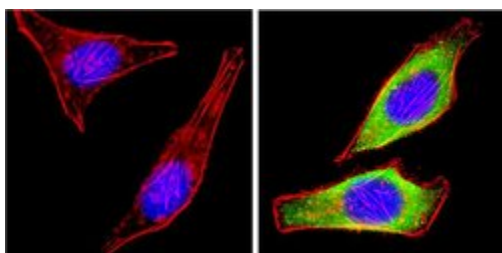
Leptin Antibody (PA1-052) in IF

Immunofluorescent analysis of Leptin (green) showing staining in the secretion of NIH-3T3 cells. Formalin-fixed cells were permeabilized with 0.1% Triton X-100 in TBS for 5-10 minutes and blocked with 3% BSA-PBS for 30 minutes at room temperature. Cells were probed with a Leptin polyclonal antibody (Product # PA1-052) in 3% BSA-PBS at a dilution of 1:100 and incubated overnight at 4 °C in a humidified chamber. Cells were washed with PBST and incubated with a DyLight-conjugated secondary antibody in PBS at room temperature in the dark. F-actin (red) was stained with a fluorescent red phalloidin and nuclei (blue) were stained with Hoechst or DAPI. Images were taken at a magnification of 100x.



Leptin Antibody (PA1-052) in IF

Immunofluorescent analysis of Leptin (green) showing staining in the secretion of HepG2 cells. Formalin-fixed cells were permeabilized with 0.1% Triton X-100 in TBS for 5-10 minutes and blocked with 3% BSA-PBS for 30 minutes at room temperature. Cells were probed with a Leptin polyclonal antibody (Product # PA1-052) in 3% BSA-PBS at a dilution of 1:100 and incubated overnight at 4 °C in a humidified chamber. Cells were washed with PBST and incubated with a DyLight-conjugated secondary antibody in PBS at room temperature in the dark. F-actin (red) was stained with a fluorescent red phalloidin and nuclei (blue) were stained with Hoechst or DAPI. Images were taken at a magnification of 100x.



Leptin Antibody (PA1-052) in IF

Immunofluorescent analysis of Leptin (green) showing staining in the secretion of HeLa cells. Formalin-fixed cells were permeabilized with 0.1% Triton X-100 in TBS for 5-10 minutes and blocked with 3% BSA-PBS for 30 minutes at room temperature. Cells were probed with a Leptin polyclonal antibody (Product # PA1-052) in 3% BSA-PBS at a dilution of 1:100 and incubated overnight at 4 °C in a humidified chamber. Cells were washed with PBST and incubated with a DyLight-conjugated secondary antibody in PBS at room temperature in the dark. F-actin (red) was stained with a fluorescent red phalloidin and nuclei (blue) were stained with Hoechst or DAPI. Images were taken at a magnification of 100x.

[View more figures on thermofisher.com](http://thermofisher.com)

12 References

Immunofluorescence (1)

Heliyon

An ameloblastin C-terminus variant is present in human adipose tissue.

"PA1-052 was used in Immunohistochemistry-immunofluorescence to investigate if ameloblastin is expressed in adipose tissue, and has a role during differentiation of adipocytes."

Authors: Stakkestad Ø,Heyward C,Lyngstadaas SP,Medin T,Vondrasek J,Lian AM,Pezeshki G,Reseland JE

Species
Human

Dilution
1:200

Year
2018

Immunohistochemistry (1)

Heliyon

An ameloblastin C-terminus variant is present in human adipose tissue.

"PA1-052 was used in Immunohistochemistry-immunofluorescence to investigate if ameloblastin is expressed in adipose tissue, and has a role during differentiation of adipocytes."

Authors: Stakkestad Ø,Heyward C,Lyngstadaas SP,Medin T,Vondrasek J,Lian AM,Pezeshki G,Reseland JE

Species
Human

Dilution
1:200

Year
2018

Immunohistochemistry (Paraffin) (2)

Reproductive biology and endocrinology : RB and E

Expression of leptin and its long form receptor at the porcine maternal-fetal interface: contrasting healthy and arresting conceptus attachment sites during early and mid-pregnancy.

"PA1-052 was used in immunohistochemistry - paraffin section and western blot to investigate the role of LEP and its long form receptor in porcine conceptus development"

Authors: Kerr A,Kridli RT,Khalaj K,Wessels JM,Hahnel A,Tayade C

Species
Not Applicable

Dilution
Not Cited

Year
2014

Animal reproduction science

The effect of leptin on luteal angiogenic factors during the luteal phase of the estrous cycle in goats.

"PA1-052 was used in immunohistochemistry - paraffin section to measure FGF2, Ang1, VEGF, ObRb, and leptin expression in the corpus luteum of goats"

Authors: Wiles JR,Katchko RA,Benavides EA,O'Gorman CW,Escudero JM,Keisler DH,Stanko RL,Garcia MR

Species
Sheep

Dilution
1:500

Year
2014

More applications with references on thermofisher.com

WB (6) **ICC (2)**

For Research Use Only. Not for use in diagnostic procedures. Not for resale without express authorization. Products are warranted to operate or perform substantially in conformance with published Product specifications in effect at the time of sale, as set forth in the Production documentation, specifications and/or accompanying package inserts ("Documentation"). No claim of suitability for use in applications regulated by FDA is made. The warranty provided herein is valid only when used by properly trained individuals. Unless otherwise stated in the Documentation, this warranty is limited to one year from date of shipment when the Product is subjected to normal, proper and intended usage. This warranty does not extend to anyone other than the Buyer. Any model or sample furnished to Buyer is merely illustrative of the general type and quality of goods and does not represent that any Product will conform to such model or sample. NO OTHER WARRANTIES, EXPRESS OR IMPLIED, ARE GRANTED INCLUDING WITHOUT LIMITATION, IMPLIED WARRANTIES OF MERCHANTABILITY, FITNESS FOR ANY PARTICULAR PURPOSE, OR NON INFRINGEMENT. BUYER'S EXCLUSIVE REMEDY FOR NON-CONFORMING PRODUCTS DURING THE WARRANTY PERIOD IS LIMITED TO REPAIR, REPLACEMENT OF OR REFUND FOR THE NON-CONFORMING PRODUCT(S) AT SELLER'S SOLE OPTION. THERE IS NO OBLIGATION TO REPAIR, REPLACE OR REFUND FOR PRODUCTS AS THE RESULT OF (I) ACCIDENT, DISASTER OR EVENT OF FORCE MAJEURE, (II) MISUSE, FAULT OR NEGLIGENCE OF OR BY BUYER, (III) USE OF THE PRODUCTS IN A MANNER FOR WHICH THEY WERE NOT DESIGNED, OR (IV) IMPROPER STORAGE AND HANDLING OF THE PRODUCTS. Unless otherwise expressly stated on the Product or in the documentation accompanying the Product, the Product is intended for research only and is not to be used for any other purpose, including without limitation, unauthorized commercial uses, in vitro diagnostic uses, ex vivo or in vivo therapeutic uses, or any type of consumption by or application to human or animals.