

CRM1 Polyclonal Antibody

Product Details	
Size	100 µg
Species Reactivity	Bovine, Human, Mouse
Host/Isotype	Rabbit / IgG
Class	Polyclonal
Type	Antibody
Conjugate	Unconjugated
Immunogen	Synthetic peptide corresponding to residues C R(1043) Q A D E E K H K R Q M S V P G S(1058) of human CRM1.
Form	Liquid
Concentration	1 mg/mL
Storage conditions	-20° C, Avoid Freeze/Thaw Cycles
RRID	AB_326010

Applications	Tested Dilution	Publications
Western Blot (WB)	1:500-1:5,000	-
Immunoprecipitation (IP)	Assay-dependent	-

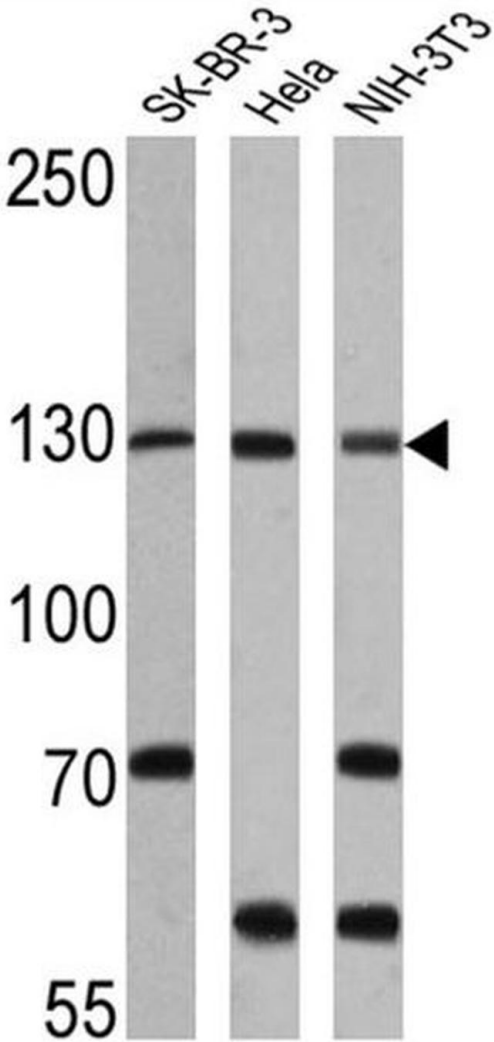
Product Specific Information

PA1-083 detects CRM1 (chromosome region maintenance 1) from bovine retinal extract, human and mouse samples.

PA1-083 has been successfully used in Western blot and immunoprecipitation procedures. By Western blot, this antibody detects an ~135 kDa protein representing CRM1 from bovine retinal extract.

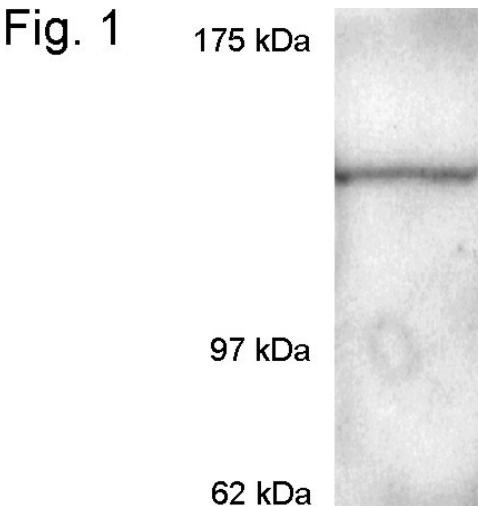
The PA1-083 immunogen is a synthetic peptide corresponding to residues C R(1043) Q A D E E K H K R Q M S V P G S (1058) of human CRM1. This sequence is 88% conserved in mouse, rat, and *Xenopus laevis*. The PA1-083 immunizing peptide (Cat. # PEP-162) is available for use in neutralization and control experiments.

Product Images For CRM1 Polyclonal Antibody



CRM1 Antibody (PA1-083) in WB

Western blot analysis of Exportin 1 was performed by loading 25 µg of SK-BR-3 (lane 1), HeLa (lane 2) and NIH-3T3 (lane 3) onto an SDS polyacrylamide gel. Proteins were transferred to a PVDF membrane and blocked at 4°C overnight. The membrane was probed with an Exportin 1 polyclonal antibody (Product # PA1-083) at a dilution of 1:1000 overnight at 4°C, washed in TBST, and probed with an HRP-conjugated secondary antibody for 1 hr at room temperature in the dark. Chemiluminescent detection was performed using Pierce ECL Plus Western Blotting Substrate (Product # 32132). Results show a band at ~130 kDa.



CRM1 Antibody (PA1-083) in WB

Western blot detection of CRM1 from bovine retinal extract using Product # PA1-083.

For Research Use Only. Not for use in diagnostic procedures. Not for resale without express authorization. Products are warranted to operate or perform substantially in conformance with published Product specifications in effect at the time of sale, as set forth in the Production documentation, specifications and/or accompanying package inserts ("Documentation"). No claim of suitability for use in applications regulated by FDA is made. The warranty provided herein is valid only when used by properly trained individuals. Unless otherwise stated in the Documentation, this warranty is limited to one year from date of shipment when the Product is subjected to normal, proper and intended usage. This warranty does not extend to anyone other than the Buyer. Any model or sample furnished to Buyer is merely illustrative of the general type and quality of goods and does not represent that any Product will conform to such model or sample. NO OTHER WARRANTIES, EXPRESS OR IMPLIED, ARE GRANTED INCLUDING WITHOUT LIMITATION, IMPLIED WARRANTIES OF MERCHANTABILITY, FITNESS FOR ANY PARTICULAR PURPOSE, OR NON INFRINGEMENT. BUYER'S EXCLUSIVE REMEDY FOR NON-CONFORMING PRODUCTS DURING THE WARRANTY PERIOD IS LIMITED TO REPAIR, REPLACEMENT OF OR REFUND FOR THE NON-CONFORMING PRODUCT(S) AT SELLER'S SOLE OPTION. THERE IS NO OBLIGATION TO REPAIR, REPLACE OR REFUND FOR PRODUCTS AS THE RESULT OF (I) ACCIDENT, DISASTER OR EVENT OF FORCE MAJEURE, (II) MISUSE, FAULT OR NEGLIGENCE OF OR BY BUYER, (III) USE OF THE PRODUCTS IN A MANNER FOR WHICH THEY WERE NOT DESIGNED, OR (IV) IMPROPER STORAGE AND HANDLING OF THE PRODUCTS. Unless otherwise expressly stated on the Product or in the documentation accompanying the Product, the Product is intended for research only and is not to be used for any other purpose, including without limitation, unauthorized commercial uses, in vitro diagnostic uses, ex vivo or in vivo therapeutic uses, or any type of consumption by or application to human or animals.