

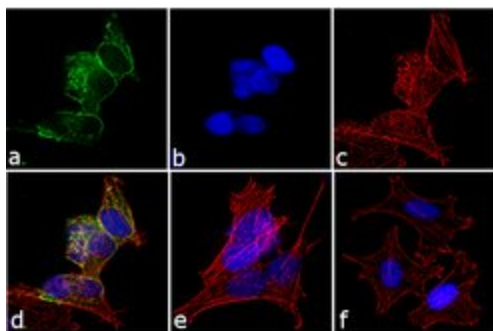
# Phospho-Huntingtin (Ser421) Polyclonal Antibody

Product Details	
Size	100 µL
Species Reactivity	Human, Mouse
Host/Isotope	Rabbit / IgG
Class	Polyclonal
Type	Antibody
Conjugate	Unconjugated
Immunogen	Synthetic phosphopeptide conjugated to KLH corresponding to residues GGRSRSG(pS)IVELI (414-426) of Human HTT
Form	Liquid
Concentration	0.24 mg/mL
Purification	Affinity chromatography
Storage buffer	PBS with 1mg/mL BSA
Contains	0.05% sodium azide
Storage Conditions	-20°C
RRID	AB_2539854

Applications	Tested Dilution	Publications
Immunocytochemistry (ICC)	1:250	-
Immunofluorescence (IF)	1:250	-
Immunohistochemistry (IHC)	1:100 - 1:200	-
Western Blot (WB)	1:500	-

## Product Specific Information

PA1-087 has been successfully used in immunofluorescence, immunohistochemistry, and Western blotting applications on human and mouse samples.



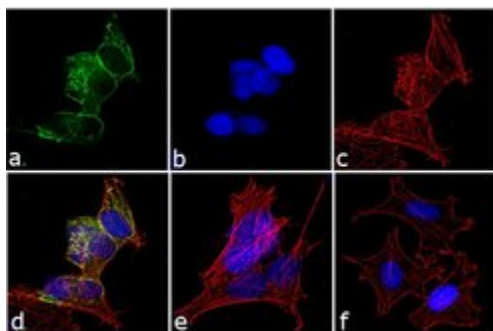
### Phospho-Huntingtin (Ser421) Antibody (PA1-087)

Modulation of expression of target protein by cell treatment to demonstrate antibody specificity. Immunofluorescence analysis of Phospho-HTT (Ser421) using Phospho-HTT (Ser421) Polyclonal Antibody (Product # PA1-087) shows induction of Phospho-HTT (Ser421) expression in SHSY-5Y cells which were treated with IGF-1 following serum starvation, as compared to untreated cells. Cell treatment validation info.

## Product Images For Phospho-Huntingtin (Ser421) Polyclonal Antibody

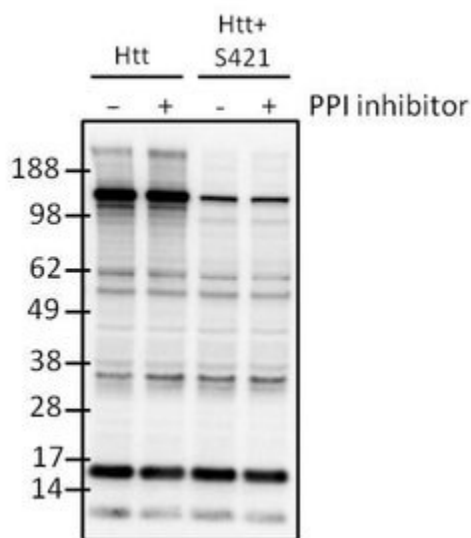
### Phospho-Huntingtin (Ser421) Antibody (PA1-087) in IF

Immunofluorescence analysis of Phospho-Huntingtin/htt pSer421 was performed using 70% confluent log phase SH-SY5Y cells which were serum starved (48 h) and stimulated with 50 ng/mL IGF-1 for 30 min. The cells were fixed with 4% paraformaldehyde for 10 minutes, permeabilized with 0.1% Triton™ X-100 for 10 minutes, and blocked with 1% BSA for 1 hour at room temperature. The cells were labeled with Phospho-Huntingtin/htt pSer421 Rabbit Polyclonal Antibody (Product # PA1-087) at 1:250 dilution in 0.1% BSA and incubated for 3 hours at room temperature and then labeled with Goat anti-Rabbit IgG (H+L) Superclonal™ Secondary Antibody, Alexa Fluor® 488 conjugate (Product # A27034) at a dilution of 1:2000 for 45 minutes at room temperature (Panel a: green). Nuclei (Panel b: blue) were stained with SlowFade® Gold Antifade Mountant with DAPI (Product # S36938). F-actin (Panel c: red) was stained with Rhodamine Phalloidin (Product # R415, 1:300). Panel d represents the merged image showing cytoplasmic localization. Panel e shows the untreated cells. Panel f shows the control without primary antibody. The images were captured at 60X magnification.



### Phospho-Huntingtin (Ser421) Antibody (PA1-087) in WB

Western blot analysis of Phospho-Htt (pSer421) was performed on 293T cell lysates from cells transfected with full-length Htt (Lanes 1 and 2) or an Htt Ser421 mutant (Lanes 3 and 4). Following transfection, cells were left untreated (Lanes 1 and 3) or treated with PPI inhibitor (Lanes 2 and 4) to increase phosphorylation of Htt at Ser421. Lysates were loaded onto a 4-20% Tris-HCl polyacrylamide gel, transferred to a PVDF membrane, and blocked with 5% BSA/TBST for at least 1 hour. The membrane was probed with a Phospho-Htt (pSer421) polyclonal antibody (Product # PA1-087) at a dilution of 1:500 overnight at 4°C on a rocking platform, washed in TBS-0.1% Tween-20 and probed with a goat anti-rabbit IgG-HRP secondary antibody (Product # 31460) at a dilution of 1:30,000 for at least 1 hour. Chemiluminescent detection was performed using SuperSignal West Pico (Product # 34087).



For Research Use Only. Not for use in diagnostic procedures. Not for resale without express authorization. Products are warranted to operate or perform substantially in conformance with published Product specifications in effect at the time of sale, as set forth in the Production documentation, specifications and/or accompanying package inserts ("Documentation"). No claim of suitability for use in applications regulated by FDA is made. The warranty provided herein is valid only when used by properly trained individuals. Unless otherwise stated in the Documentation, this warranty is limited to one year from date of shipment when the Product is subjected to normal, proper and intended usage. This warranty does not extend to anyone other than the Buyer. Any model or sample furnished to Buyer is merely illustrative of the general type and quality of goods and does not represent that any Product will conform to such model or sample. NO OTHER WARRANTIES, EXPRESS OR IMPLIED, ARE GRANTED INCLUDING WITHOUT LIMITATION, IMPLIED WARRANTIES OF MERCHANTABILITY, FITNESS FOR ANY PARTICULAR PURPOSE, OR NON INFRINGEMENT. BUYER'S EXCLUSIVE REMEDY FOR NON-CONFORMING PRODUCTS DURING THE WARRANTY PERIOD IS LIMITED TO REPAIR, REPLACEMENT OF OR REFUND FOR THE NON-CONFORMING PRODUCT(S) AT SELLER'S SOLE OPTION. THERE IS NO OBLIGATION TO REPAIR, REPLACE OR REFUND FOR PRODUCTS AS THE RESULT OF (I) ACCIDENT, DISASTER OR EVENT OF FORCE MAJEURE, (II) MISUSE, FAULT OR NEGLIGENCE OF OR BY BUYER, (III) USE OF THE PRODUCTS IN A MANNER FOR WHICH THEY WERE NOT DESIGNED, OR (IV) IMPROPER STORAGE AND HANDLING OF THE PRODUCTS. Unless otherwise expressly stated on the Product or in the documentation accompanying the Product, the Product is intended for research only and is not to be used for any other purpose, including without limitation, unauthorized commercial uses, in vitro diagnostic uses, ex vivo or in vivo therapeutic uses, or any type of consumption by or application to human or animals.