

EBP50 Polyclonal Antibody

Product Details	
Size	100 µg
Species Reactivity	Human, Mouse
Published Species	Dog, Rat, Human, Mouse
Host/Isotope	Rabbit / IgG
Class	Polyclonal
Type	Antibody
Conjugate	Unconjugated
Immunogen	Bacterially expressed, His-tagged human EBP50.
Form	Liquid
Concentration	1 mg/mL
Purification	Antigen affinity chromatography
Storage buffer	PBS with 1mg/mL BSA
Contains	0.05% sodium azide
Storage Conditions	-20° C, Avoid Freeze/Thaw Cycles
RRID	AB_2191493

Applications	Tested	Dilution	Published
Western Blot (WB)	✓	1 µg/mL	9 Publications
Immunofluorescence (IF)	✓	2 µg/mL	4 Publications
Immunohistochemistry (IHC)	-		17 Publications
Immunohistochemistry (Paraffin) (IHC (P))	✓	10 µg/mL	6 Publications
Immunocytochemistry (ICC)	✓	2 µg/mL	4 Publications
Immunoprecipitation (IP)	✓	Assay dependent	

Product Specific Information

PA1-090 detects ezrin-radixin-moesin (ERM) binding phosphoprotein of 50 kDa (EBP50) from mouse tissues, human T84 and Calu3 cells as well as recombinant human protein.

PA1-090 has been successfully used in Western blot, Immunohistochemistry, immunofluorescence and immunoprecipitation procedures. By Western blot, this antibody detects an ~50 kDa protein representing EBP50 from T84 cell extract. Immunohistochemical staining of EBP50 in mouse airway results in staining of the epithelium.

The PA1-090 immunogen is recombinant human His-tagged EBP50 obtained from bacteria. All His-tag specific antibody has been removed. This product was epitope affinity purified using a synthetic peptide to residues C R(286) S A S S D T S E E L N S Q D S P(302) of human EBP50.

Product Images For EBP50 Polyclonal Antibody

EBP50 Antibody (PA1-090) in IF

Immunofluorescent analysis of EBP50 was performed using 70% confluent log phase T-47D cells. The cells were fixed with 4% paraformaldehyde for 10 minutes, permeabilized with 0.1% Triton™ X-100 for 10 minutes, and blocked with 1% BSA for 1 hour at room temperature. The cells were labeled with EBP50 Rabbit Polyclonal Antibody (Product # PA1-090) at 2 µg/mL in 0.1% BSA and incubated for 3 hours at room temperature and then labeled with Goat anti-Rabbit IgG (H+L) Superclonal™ Secondary Antibody, Alexa Fluor® 488 conjugate (Product # A27034) a dilution of 1:2000 for 45 minutes at room temperature (Panel a: green). Nuclei (Panel b: blue) were stained with SlowFade® Gold Antifade Mountant with DAPI (Product # S36938). F-actin (Panel c: red) was stained with Alexa Fluor® 555 Rhodamine Phalloidin (Product # R415, 1:300). Panel d represents the merged image showing cytoplasmic localization. Panel e shows the no primary antibody control. The images were captured at 60X magnification.

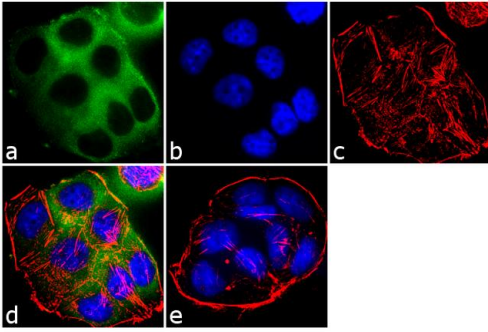
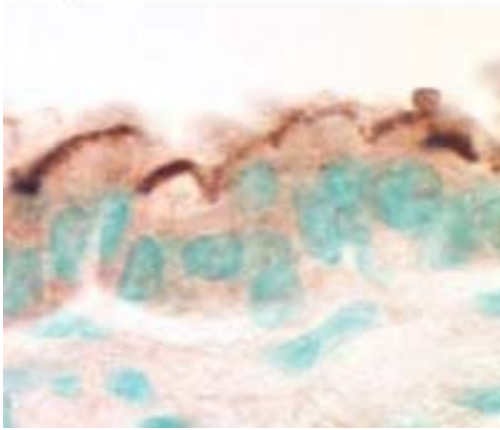
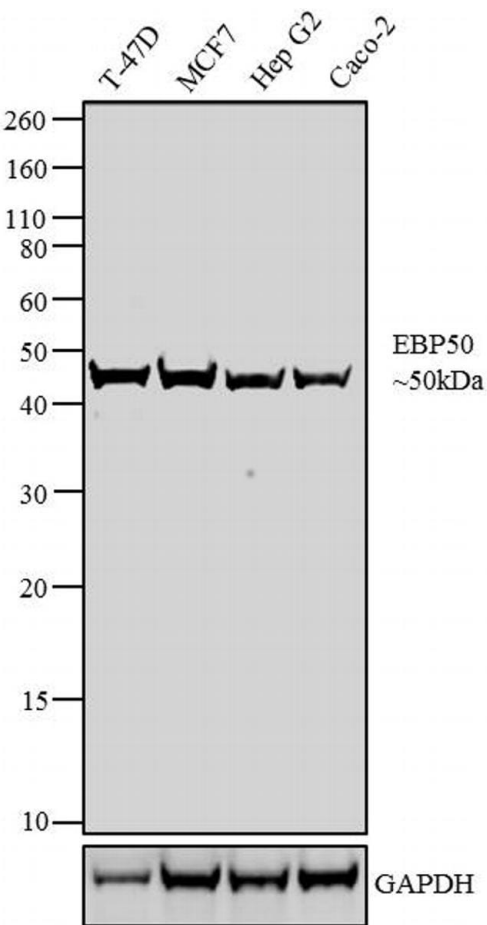


Fig. 1

EBP50 Antibody (PA1-090) in IHC

Immunohistochemical staining of EBP50 in mouse airway using Product # PA1-090.





EBP50 Antibody (PA1-090) in WB

Western blot analysis was performed on whole cell extracts of T-47D (Lane 1), MCF7 (Lane 2), HepG2 (Lane 3) and Caco-2 (Lane 4). The blots were probed with Anti-EBP50 Rabbit polyclonal Antibody (Product # PA1-090, 1 μ g/mL) and detected by chemiluminescence using Goat anti-Rabbit IgG (H+L) Superclonal™ Secondary Antibody, HRP conjugate (Product # A27036, 0.4 μ g/mL, 1:2500 dilution). A ~ 50 kDa band corresponding to EBP50 was observed across cell lines tested. Known quantity of protein samples were electrophoresed using Novex® NuPAGE® 4-12 % Bis-Tris gel (Product # NP0321BOX), XCell SureLock™ Electrophoresis System (Product # EI0002) and Novex® Sharp Pre-Stained Protein Standard (Product # LC5800). Resolved proteins were then transferred onto a nitrocellulose membrane with iBlot® 2 Dry Blotting System (Product # IB21001). The membrane was probed with the relevant primary and secondary Antibody using iBind™ Flex Western Starter Kit (Product # SLF2000S). Chemiluminescent detection was performed using Pierce™ ECL Western Blotting Substrate (Product # 32106).

[View more figures on thermofisher.com](https://www.thermofisher.com)

40 References

Western Blot (9)

International journal of oncology

Establishment of three novel cell lines derived from African American patients with colorectal carcinoma: A unique tool for assessing racial health disparity.

"Published figure using EBP50 polyclonal antibody (Product # PA1-090) in Western Blot"

Authors: Paredes J, Ji P, Lacombe JF, Shroyer KR, Martello LA, Williams JL

Species
Not Applicable

Dilution
Not Cited

Year
2018

Oncogene

PTEN, NHERF1 and PHLPP form a tumor suppressor network that is disabled in glioblastoma.

"PA1-090 was used in western blot to study the regulation of phosphatidylinositol-3-OH kinase-Akt pathway in glioblastoma"

Authors: Molina JR, Agarwal NK, Morales FC, Hayashi Y, Aldape KD, Cote G, Georgescu MM

Species
Mouse

Dilution
Not Cited

Year
2012

[View more WB references on thermofisher.com](#)

Immunofluorescence (4)

Journal of experimental and clinical cancer research : CR

NHERF1 and tumor microenvironment: a new scene in invasive breast carcinoma.

Authors: Saponaro C, Vaghegini A, Scarpi E, Centonze M, Catacchio I, Popescu O, Pastena MI, Giotta F, Silvestris N, Mangia A

Species
Human

Dilution
Not Cited

Year
2018

Neoplasia (New York, N.Y.)

NHERF1/EBP50 Suppresses Wnt--Catenin Pathway-Driven Intestinal Neoplasia.

"PA1-090 was used in immunohistochemistry - paraffin section explore the role of NHERF1 in intestinal adenoma development"

Authors: Georgescu MM, Gagea M, Cote G

Species
Mouse

Dilution
1:3200

Year
2016

[View more IF references on thermofisher.com](#)

More applications with references on thermofisher.com

IHC (17)

IHC (P) (6)

ICC (4)

For Research Use Only. Not for use in diagnostic procedures. Not for resale without express authorization. Products are warranted to operate or perform substantially in conformance with published Product specifications in effect at the time of sale, as set forth in the Production documentation, specifications and/or accompanying package inserts ("Documentation"). No claim of suitability for use in applications regulated by FDA is made. The warranty provided herein is valid only when used by properly trained individuals. Unless otherwise stated in the Documentation, this warranty is limited to one year from date of shipment when the Product is subjected to normal, proper and intended usage. This warranty does not extend to anyone other than the Buyer. Any model or sample furnished to Buyer is merely illustrative of the general type and quality of goods and does not represent that any Product will conform to such model or sample. NO OTHER WARRANTIES, EXPRESS OR IMPLIED, ARE GRANTED INCLUDING WITHOUT LIMITATION, IMPLIED WARRANTIES OF MERCHANTABILITY, FITNESS FOR ANY PARTICULAR PURPOSE, OR NON INFRINGEMENT. BUYER'S EXCLUSIVE REMEDY FOR NON-CONFORMING PRODUCTS DURING THE WARRANTY PERIOD IS LIMITED TO REPAIR, REPLACEMENT OF OR REFUND FOR THE NON-CONFORMING PRODUCT(S) AT SELLER'S SOLE OPTION. THERE IS NO OBLIGATION TO REPAIR, REPLACE OR REFUND FOR PRODUCTS AS THE RESULT OF (I) ACCIDENT, DISASTER OR EVENT OF FORCE MAJEURE, (II) MISUSE, FAULT OR NEGLIGENCE OF OR BY BUYER, (III) USE OF THE PRODUCTS IN A MANNER FOR WHICH THEY WERE NOT DESIGNED, OR (IV) IMPROPER STORAGE AND HANDLING OF THE PRODUCTS. Unless otherwise expressly stated on the Product or in the documentation accompanying the Product, the Product is intended for research only and is not to be used for any other purpose, including without limitation, unauthorized commercial uses, in vitro diagnostic uses, ex vivo or in vivo therapeutic uses, or any type of consumption by or application to human or animals.