

# GATA3 Polyclonal Antibody

Product Details	
Size	100 µg
Species Reactivity	Human
Host/Isotype	Rabbit / IgG
Class	Polyclonal
Type	Antibody
Conjugate	Unconjugated
Immunogen	Purified partial recombinant GATA3 protein expressed in E. coli
Form	Liquid
Concentration	1 mg/mL
Purification	Protein G
Storage buffer	PBS with 1mg/mL BSA, 30% glycerol
Contains	0.05% sodium azide
Storage conditions	-20°C
RRID	AB_2539874

Applications	Tested Dilution	Publications
Western Blot (WB)	1:500-1:1,500	-
Immunohistochemistry (Paraffin) (IHC (P))	1:50-1:500	-
Immunocytochemistry (ICC/IF)	1-2 µg/mL	-

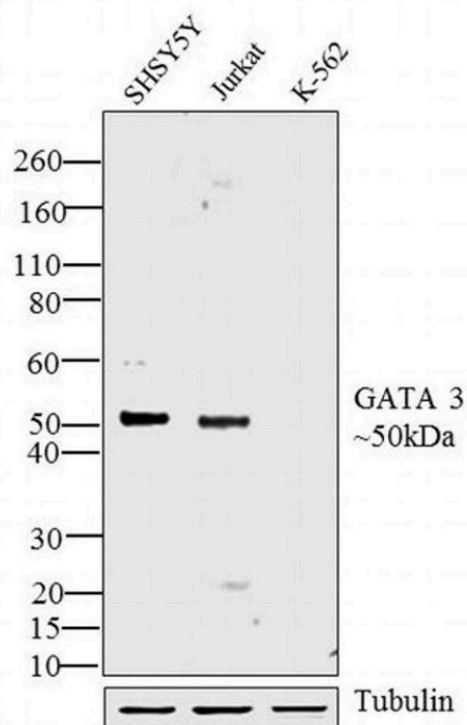
## Product Specific Information

Western blot analysis of PA1-101 detects a prominent ~50 kDa protein in GATA3 expressing SH-SY5Y cells. The signal is enhanced in nuclear extracts due to enrichment of GATA3. This antibody has also been validated for Immunofluorescence and IHC (P).PA1-101 was successfully used in western blotting analysis of GATA3 in breast cancer cell lines.

## Product Images For GATA3 Polyclonal Antibody

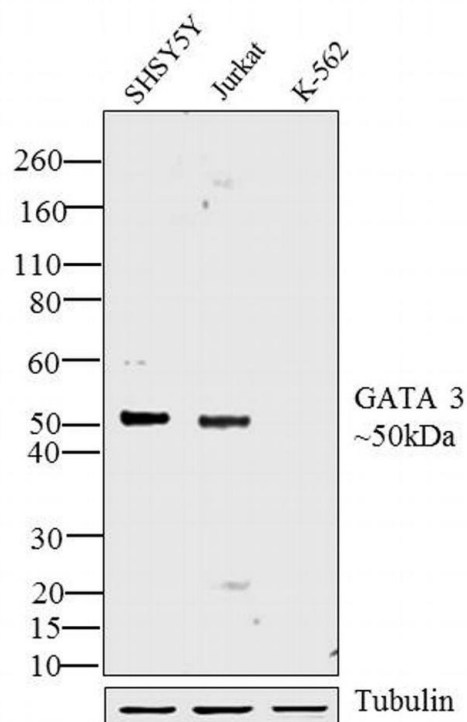
### GATA3 Antibody (PA1-101)

Antibody specificity was demonstrated by detection of differential basal expression of the target across cell lines tested owing to their inherent genetic constitution. Relative expression of GATA3 was observed in SH-SY5Y and Jurkat as compared to K-562 using GATA3 Polyclonal Antibody (Product # PA1-101) in Western Blot. {RE}



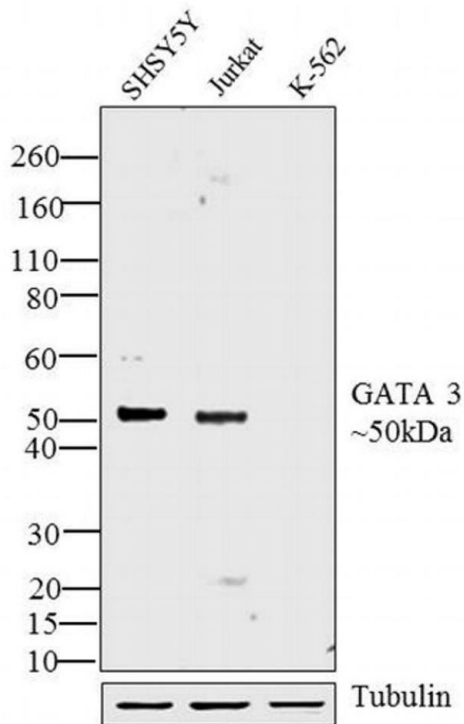
### GATA3 Antibody (PA1-101) in WB

Western blot analysis was performed on whole cell extracts (20 µg lysate) of SH-SY5Y (Lane 1), Jurkat (Lane 2) and K-562 (Lane 3). The blots were probed with Anti-GATA3 Rabbit Polyclonal Antibody (Product # PA1-101, 1:500-1:1500 dilution) and detected by chemiluminescence using Goat anti-Rabbit IgG (Heavy Chain) Superclonal™ Secondary Antibody, HRP conjugate (Product # A27036, 0.4 µg/mL, 1:2500 dilution). A 50 kDa band corresponding to GATA3 was observed across cell lines tested except for K-562 which is negative cell line for GATA-3. Known quantity of protein samples were electrophoresed using Novex® NuPAGE® 4-12% Bis-Tris gel (Product # NP0322BOX), XCell SureLock™ Electrophoresis System (Product # EI0002) and Novex® Sharp Pre-Stained Protein Standard (Product # LC5800). Resolved proteins were then transferred onto a nitrocellulose membrane with iBlot® 2 Dry Blotting System (Product # IB21001). The membrane was probed with the relevant primary and secondary Antibody following blocking with 5% skimmed milk. Chemiluminescent detection was performed using Pierce™ ECL Western Blotting Substrate (Product # 32106).



### GATA3 Antibody (PA1-101) in WB

Western blot was performed using Anti-GATA3 Polyclonal Antibody (Product # PA1-101) and a 50 kDa band corresponding to GATA3 was observed across cell lines tested except K-562 which is reported to be negative. Whole cell extracts (30 µg lysate) of SH-SY5Y (Lane 1), Jurkat (Lane 2) and K-562 (Lane 3) were electrophoresed using Novex® NuPAGE® 4-12 % Bis-Tris gel (Product # NP0322BOX). Resolved proteins were then transferred onto a nitrocellulose membrane (Product # IB23001) by iBlot® 2 Dry Blotting System (Product # IB21001). The blot was probed with the primary antibody (1:1000 dilution) and detected by chemiluminescence with Goat anti-Rabbit IgG (Heavy Chain) Superclonal™ Recombinant Secondary Antibody, HRP (Product # A27036, 1:4000 dilution) using the iBright FL 1000 (Product # A32752). Chemiluminescent detection was performed using Novex® ECL Chemiluminescent Substrate Reagent Kit (Product # WP20005).



[View more figures on thermofisher.com](https://thermofisher.com)

For Research Use Only. Not for use in diagnostic procedures. Not for resale without express authorization. Products are warranted to operate or perform substantially in conformance with published Product specifications in effect at the time of sale, as set forth in the Production documentation, specifications and/or accompanying package inserts ("Documentation"). No claim of suitability for use in applications regulated by FDA is made. The warranty provided herein is valid only when used by properly trained individuals. Unless otherwise stated in the Documentation, this warranty is limited to one year from date of shipment when the Product is subjected to normal, proper and intended usage. This warranty does not extend to anyone other than the Buyer. Any model or sample furnished to Buyer is merely illustrative of the general type and quality of goods and does not represent that any Product will conform to such model or sample. NO OTHER WARRANTIES, EXPRESS OR IMPLIED, ARE GRANTED INCLUDING WITHOUT LIMITATION, IMPLIED WARRANTIES OF MERCHANTABILITY, FITNESS FOR ANY PARTICULAR PURPOSE, OR NON-INFRINGEMENT. BUYER'S EXCLUSIVE REMEDY FOR NON-CONFORMING PRODUCTS DURING THE WARRANTY PERIOD IS LIMITED TO REPAIR, REPLACEMENT OF OR REFUND FOR THE NON-CONFORMING PRODUCT(S) AT SELLER'S SOLE OPTION. THERE IS NO OBLIGATION TO REPAIR, REPLACE OR REFUND FOR PRODUCTS AS THE RESULT OF (I) ACCIDENT, DISASTER OR EVENT OF FORCE MAJEURE, (II) MISUSE, FAULT OR NEGLIGENCE OF OR BY BUYER, (III) USE OF THE PRODUCTS IN A MANNER FOR WHICH THEY WERE NOT DESIGNED, OR (IV) IMPROPER STORAGE AND HANDLING OF THE PRODUCTS. Unless otherwise expressly stated on the Product or in the documentation accompanying the Product, the Product is intended for research only and is not to be used for any other purpose, including without limitation, unauthorized commercial uses, in vitro diagnostic uses, ex vivo or in vivo therapeutic uses, or any type of consumption by or application to human or animals.