

S1P1 Polyclonal Antibody

Product Details	
Size	100 µg
Species Reactivity	Human, Mouse, Rat
Published Species	Mouse, Human
Host/Isotope	Rabbit / IgG
Class	Polyclonal
Type	Antibody
Conjugate	Unconjugated
Immunogen	Synthetic peptide corresponding to residues S(359) H P Q K D D G D N P E T I(372) of mouse S1P1.
Form	Liquid
Concentration	1 mg/mL
Purification	Antigen affinity chromatography
Storage buffer	PBS with 1mg/mL BSA
Contains	0.05% sodium azide
Storage Conditions	-20° C, Avoid Freeze/Thaw Cycles
RRID	AB_2184729

Applications	Tested Dilution	Publications
Immunocytochemistry (ICC)	2 µg/mL	-
Immunofluorescence (IF)	2 µg/mL	4 Publications
Immunohistochemistry (IHC)	Assay dependent	3 Publications
Immunoprecipitation (IP)	Assay dependent	-
Western Blot (WB)	2-4 µg/mL	2 Publications
Flow Cytometry (Flow)	-	1 Publication
Immunohistochemistry (Frozen) (IHC (F))	-	1 Publication

Product Specific Information

PA1-1040 detects S1P1 protein in transfected human and mouse cell samples. This antibody shows no cross-reactivity to S1P3.

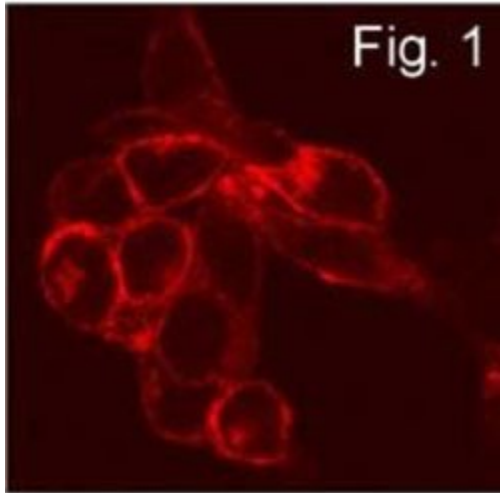
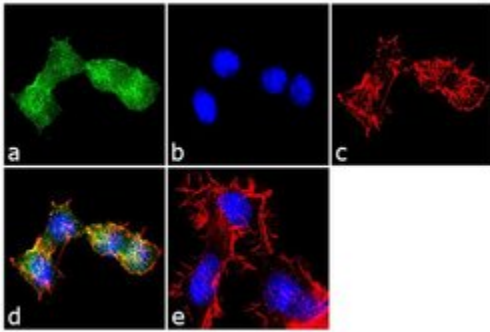
PA1-1040 has successfully been used in immuno-fluorescence, immunohistochemistry, immunoprecipitation and Western blot procedures. By Western blot, this antibody detects an ~44 kDa protein representing recombinant S1P1 from transfected HEK293 cells. Immunofluorescence data demonstrates that S1P1 is localized to the plasma membrane after staining with PA1-1040.

The PA1-1040 immunogen is a synthetic peptide corresponding to residues S(359) H P Q K D D G D N P E T I(372) of mouse S1P1. This sequence is completely conserved in rat and 92% conserved in human S1P1. This peptide (Cat. # PEP-220) is available for use in neutralization and control experiments.

Product Images For S1P1 Polyclonal Antibody

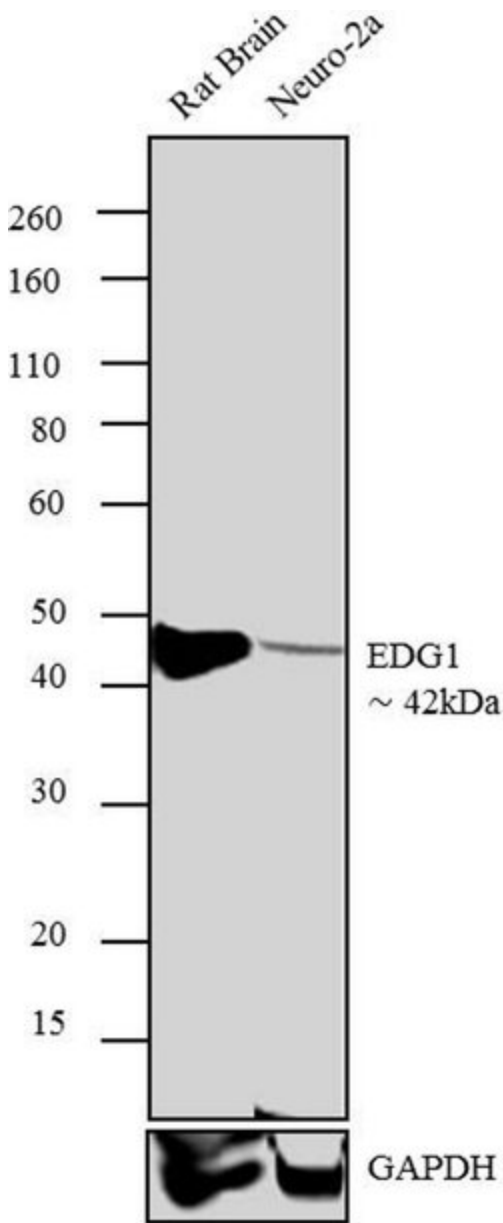
S1P1 Antibody (PA1-1040) in IF

Immunofluorescence analysis of EDG1 was performed using 70% confluent log phase Neuro-2a cells. The cells were fixed with 4% paraformaldehyde for 10 minutes, permeabilized with 0.1% Triton™ X-100 for 10 minutes, and blocked with 1% BSA for 1 hour at room temperature. The cells were labeled with EDG1 Rabbit Polyclonal Antibody (Product # PA1-1040) at 2 µg/mL in 0.1% BSA and incubated for 3 hours at room temperature and then labeled with Goat anti-Rabbit IgG (H+L) Superclonal™ Secondary Antibody, Alexa Fluor® 488 conjugate (Product # A27034) a dilution of 1:2000 for 45 minutes at room temperature (Panel a: green). Nuclei (Panel b: blue) were stained with SlowFade® Gold Antifade Mountant with DAPI (Product # S36938). F-actin (Panel c: red) was stained with Alexa Fluor® 555 Rhodamine Phalloidin (Product # R415, 1:300). Panel d represents the merged image showing localization in the membrane. Panel e shows the no primary antibody control. The images were captured at 60X magnification.



S1P1 Antibody (PA1-1040) in IF

Immunofluorescence staining of S1P1 in transfected CCL39 cells using Product # PA1-1040.



S1P1 Antibody (PA1-1040) in WB

Western blot analysis of EDG1 was performed using tissue extract and whole cell lysate of Rat Brain (Lane 1) and Neuro- 2a (Lane 2). The blots were probed with Anti- EDG1 Rabbit polyclonal Antibody (Product # PA1-1040, 2 $\mu\text{g}/\text{mL}$) and detected by chemiluminescence using Goat anti-Rabbit IgG (H+L) Superclonal™ Secondary Antibody, HRP conjugate (Product # A27036, 0.4 $\mu\text{g}/\text{mL}$, 1:2500 dilution). A ~ 42 kDa band corresponding to EDG1 was observed across tissue and cell line tested. Known quantity of protein samples were electrophoresed using Novex® NuPAGE® 4-12 % Bis-Tris gel (Product # NP0321BOX), XCell SureLock™ Electrophoresis System (Product # EI0002) and Novex® Sharp Pre-Stained Protein Standard (Product # LC5800). Resolved proteins were then transferred onto a nitrocellulose membrane with iBlot® 2 Dry Blotting System (Product # IB21001). The membrane was probed with the relevant primary and secondary Antibody using iBind™ Flex Western Starter Kit (Product # SLF2000S). Chemiluminescent detection was performed using Pierce™ ECL Western Blotting Substrate (Product # 32106).

View more figures on [thermofisher.com](https://www.thermofisher.com)

11 References

Immunofluorescence (4)

Neural plasticity

Sphingosine 1-Phosphate Receptor 1 Modulates CNTF-Induced Axonal Growth and Neuroprotection in the Mouse Visual System.

"PA1-1040 was used in Immunohistochemistry-immunofluorescence to suggest that sphingosine 1-phosphate receptor 1 is a major regulator of retinal neuron survival and restricts the ciliary neurotrophic factor-induced retinal ganglion cell growth response."

Authors: Joly S,Dalkara D,Pernet V

Species
Mouse

Dilution
1:200

Year
2018

International journal of molecular sciences

Sphingosine-1-Phosphate Receptor 1 Is Involved in Non-Obese Diabetic Mouse Thymocyte Migration Disorders.

"Published figure using S1P1 polyclonal antibody (Product # PA1-1040) in Flow Cytometry"

Authors: Lemos JP,Smaniotta S,Messias CV,Moreira OC,Cotta-de-Almeida V,Dardenne M,Savino W,Mendes-da-Cruz DA

Species
Mouse
Not Applicable

Dilution
1:250
Not Cited

Year
2018

[View more IF references on thermofisher.com](#)

Immunohistochemistry (3)

Neural plasticity

Sphingosine 1-Phosphate Receptor 1 Modulates CNTF-Induced Axonal Growth and Neuroprotection in the Mouse Visual System.

"PA1-1040 was used in Immunohistochemistry-immunofluorescence to suggest that sphingosine 1-phosphate receptor 1 is a major regulator of retinal neuron survival and restricts the ciliary neurotrophic factor-induced retinal ganglion cell growth response."

Authors: Joly S,Dalkara D,Pernet V

Species
Mouse

Dilution
1:200

Year
2018

International journal of molecular sciences

Sphingosine-1-Phosphate Receptor 1 Is Involved in Non-Obese Diabetic Mouse Thymocyte Migration Disorders.

"Published figure using S1P1 polyclonal antibody (Product # PA1-1040) in Flow Cytometry"

Authors: Lemos JP,Smaniotta S,Messias CV,Moreira OC,Cotta-de-Almeida V,Dardenne M,Savino W,Mendes-da-Cruz DA

Species
Mouse
Not Applicable

Dilution
1:250
Not Cited

Year
2018

[View more IHC references on thermofisher.com](#)

More applications with references on thermofisher.com

[Flow \(1\)](#) [WB \(2\)](#) [IHC \(F\) \(1\)](#)

For Research Use Only. Not for use in diagnostic procedures. Not for resale without express authorization. Products are warranted to operate or perform substantially in conformance with published Product specifications in effect at the time of sale, as set forth in the Production documentation, specifications and/or accompanying package inserts ("Documentation"). No claim of suitability for use in applications regulated by FDA is made. The warranty provided herein is valid only when used by properly trained individuals. Unless otherwise stated in the Documentation, this warranty is limited to one year from date of shipment when the Product is subjected to normal, proper and intended usage. This warranty does not extend to anyone other than the Buyer. Any model or sample furnished to Buyer is merely illustrative of the general type and quality of goods and does not represent that any Product will conform to such model or sample. NO OTHER WARRANTIES, EXPRESS OR IMPLIED, ARE GRANTED INCLUDING WITHOUT LIMITATION, IMPLIED WARRANTIES OF MERCHANTABILITY, FITNESS FOR ANY PARTICULAR PURPOSE, OR NON INFRINGEMENT. BUYER'S EXCLUSIVE REMEDY FOR NON-CONFORMING PRODUCTS DURING THE WARRANTY PERIOD IS LIMITED TO REPAIR, REPLACEMENT OF OR REFUND FOR THE NON-CONFORMING PRODUCT(S) AT SELLER'S SOLE OPTION. THERE IS NO OBLIGATION TO REPAIR, REPLACE OR REFUND FOR PRODUCTS AS THE RESULT OF (I) ACCIDENT, DISASTER OR EVENT OF FORCE MAJEURE, (II) MISUSE, FAULT OR NEGLIGENCE OF OR BY BUYER, (III) USE OF THE PRODUCTS IN A MANNER FOR WHICH THEY WERE NOT DESIGNED, OR (IV) IMPROPER STORAGE AND HANDLING OF THE PRODUCTS. Unless otherwise expressly stated on the Product or in the documentation accompanying the Product, the Product is intended for research only and is not to be used for any other purpose, including without limitation, unauthorized commercial uses, in vitro diagnostic uses, ex vivo or in vivo therapeutic uses, or any type of consumption by or application to human or animals.