

# GLUT1 Polyclonal Antibody

Product Details	
Size	100 µg
Species	Bovine, Mouse, Rat
Published Species	Rat
Expression System	Rabbit / IgG
Class	Polyclonal
Type	Antibody
Conjugate	Unconjugated
Immunogen	Synthetic peptide corresponding to residues S(475) D K T P E E L F H P L G A D S Q V(492) of rat GLUT1.
Form	Liquid
Concentration	1 mg/mL
Purification	Antigen affinity chromatography
Storage buffer	PBS with 1mg/mL BSA
Contains	0.05% sodium azide
Storage Conditions	-20° C, Avoid Freeze/Thaw Cycles
RRID	AB_2190931

Applications	Tested Dilution	Publications
Immunocytochemistry (ICC)	Assay Dependent	-
Immunofluorescence (IF)	Assay dependent	-
Western Blot (WB)	1:1000	1 Publication

## Product Specific Information

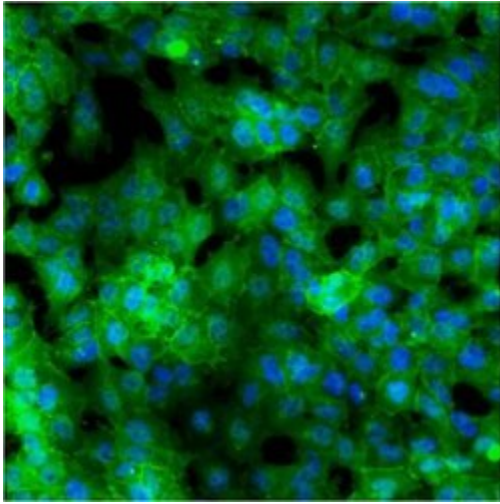
PA1-1063 detects GLUT1 in rat, mouse and bovine samples.

PA1-1063 has been successfully used in Western blot and immunofluorescence procedures. By Western blot, this antibody detects a

~42 kDa protein representing GLUT1 in rat, mouse and bovine brain samples.

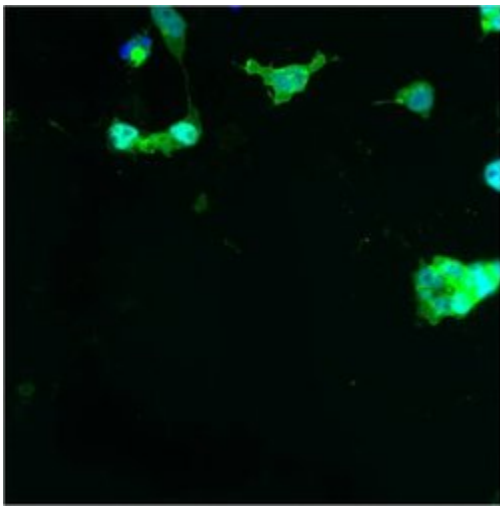
The PA1-1063 immunogen is a synthetic peptide corresponding to residues S(475) D K T P E E L F H P L G A D S Q V(492) of rat GLUT1. This sequence is conserved across many species including mouse, bovine, human, porcine and ovine. This peptide (Cat. # PEP-289) is available for use in neutralization and control experiments.

## Product Images For GLUT1 Polyclonal Antibody



### **GLUT1 Antibody (PA1-1063) in IF**

Immunofluorescent analysis of Glucose Transporter 1 using anti-Glucose Transporter 1 polyclonal antibody (Product # PA1-1063) shows staining in HMVEC Cells.



### **GLUT1 Antibody (PA1-1063) in IF**

Immunofluorescent analysis of Glucose Transporter 1 using anti-Glucose Transporter 1 polyclonal antibody (Product # PA1-1063) shows staining in p19 Cells.

Fig. 1



### **GLUT1 Antibody (PA1-1063) in WB**

Western blot detection of GLUT1 from rat brain samples using Product # PA1-1063.

## Western Blot (1)

PloS one

### Mechanism of insulin resistance in a rat model of kidney disease and the risk of developing type 2 diabetes.

"PA1-1063 was used in Western Blotting to examine the underlying mechanisms which lead to insulin resistance in chronic kidney disease, and whether this can promote type 2 diabetes development."

Authors: Dion F,Dumayne C,Henley N,Beauchemin S,Arias EB,Leblond FA,Lesage S,Lefrançois S,Cartee GD,Pichette V

**Species**  
Rat

**Dilution**  
Not Cited

**Year**  
2017

For Research Use Only. Not for use in diagnostic procedures. Not for resale without express authorization. Products are warranted to operate or perform substantially in conformance with published Product specifications in effect at the time of sale, as set forth in the Production documentation, specifications and/or accompanying package inserts ("Documentation"). No claim of suitability for use in applications regulated by FDA is made. The warranty provided herein is valid only when used by properly trained individuals. Unless otherwise stated in the Documentation, this warranty is limited to one year from date of shipment when the Product is subjected to normal, proper and intended usage. This warranty does not extend to anyone other than the Buyer. Any model or sample furnished to Buyer is merely illustrative of the general type and quality of goods and does not represent that any Product will conform to such model or sample. NO OTHER WARRANTIES, EXPRESS OR IMPLIED, ARE GRANTED INCLUDING WITHOUT LIMITATION, IMPLIED WARRANTIES OF MERCHANTABILITY, FITNESS FOR ANY PARTICULAR PURPOSE, OR NON INFRINGEMENT. BUYER'S EXCLUSIVE REMEDY FOR NON-CONFORMING PRODUCTS DURING THE WARRANTY PERIOD IS LIMITED TO REPAIR, REPLACEMENT OF OR REFUND FOR THE NON-CONFORMING PRODUCT(S) AT SELLER'S SOLE OPTION. THERE IS NO OBLIGATION TO REPAIR, REPLACE OR REFUND FOR PRODUCTS AS THE RESULT OF (I) ACCIDENT, DISASTER OR EVENT OF FORCE MAJEURE, (II) MISUSE, FAULT OR NEGLIGENCE OF OR BY BUYER, (III) USE OF THE PRODUCTS IN A MANNER FOR WHICH THEY WERE NOT DESIGNED, OR (IV) IMPROPER STORAGE AND HANDLING OF THE PRODUCTS. Unless otherwise expressly stated on the Product or in the documentation accompanying the Product, the Product is intended for research only and is not to be used for any other purpose, including without limitation, unauthorized commercial uses, in vitro diagnostic uses, ex vivo or in vivo therapeutic uses, or any type of consumption by or application to human or animals.