

CPEB1 Polyclonal Antibody

Product Details	
Size	100 µg
Species Reactivity	Human, Mouse, Rat
Published Species	Mouse
Host/Isotype	Rabbit / IgG
Class	Polyclonal
Type	Antibody
Conjugate	Unconjugated
Immunogen	Synthetic peptide corresponding to residues C H(545) S M E G L R H H S P L M R N Q K N(562) of human CPEB.
Form	Liquid
Concentration	1 mg/mL
Purification	Antigen affinity chromatography
Storage buffer	PBS with 1mg/mL BSA
Contains	0.05% sodium azide
Storage conditions	-20° C, Avoid Freeze/Thaw Cycles
RRID	AB_2083772

Applications	Tested Dilution	Publications
Western Blot (WB)	1:100-1:1,000	1 Publication
Immunohistochemistry (Paraffin) (IHC (P))	1:50-1:500	-
Immunocytochemistry (ICC/IF)	1:50-1:500	1 Publication
Immunoprecipitation (IP)	-	2 Publications

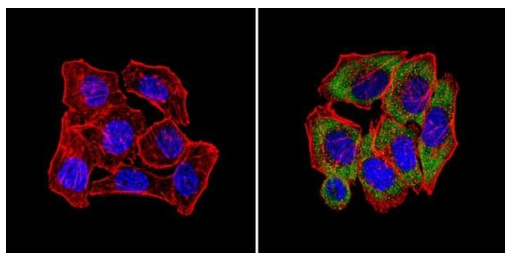
Product Specific Information

PA1-1100 detects recombinant mouse and rat CPEB (cytoplasmic polyadenylation element binding protein).

PA1-1100 has been successfully used in Western blot, ICC/IF and IHC-P procedures. By Western blot, this antibody detects ~62 and kDa protein representing recombinant mouse CPEB.

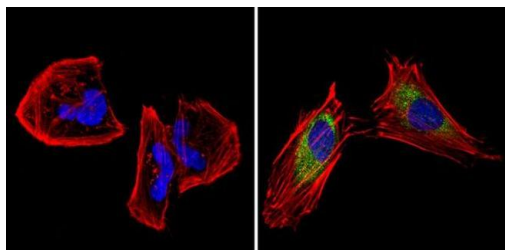
The PA1-1100 immunogen is a synthetic peptide corresponding to residues C H(545) S M E G L R H H S P L M R N Q K N(562) of human CPEB. This sequence is completely conserved in mouse. The PA1-1100 immunizing peptide (Cat. # PEP-171) is available for use in neutralization and control experiments.

Product Images For CPEB1 Polyclonal Antibody



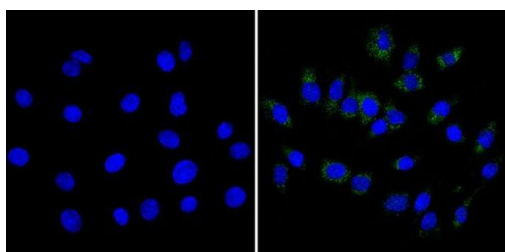
CPEB1 Antibody (PA1-1100) in ICC/IF

Immunofluorescent analysis of CPEB (green) showing staining in the cytoplasm of U251 cells (right) compared to a negative control without primary antibody (left). Formalin-fixed cells were permeabilized with 0.1% Triton X-100 in TBS for 5-10 minutes and blocked with 3% BSA-PBS for 30 minutes at room temperature. Cells were probed with a CPEB polyclonal antibody (Product # PA1-1100) in 3% BSA-PBS at a dilution of 1:100 and incubated overnight at 4°C in a humidified chamber. Cells were washed with PBST and incubated with a DyLight-conjugated secondary antibody in PBS at room temperature in the dark. Actin was stained using Alexa Fluor 554 (red) and nuclei were stained with Hoechst or DAPI (blue). Images were taken at a magnification of 60x.



CPEB1 Antibody (PA1-1100) in ICC/IF

Immunofluorescent analysis of CPEB (green) showing staining in the cytoplasm of HeLa cells (right) compared to a negative control without primary antibody (left). Formalin-fixed cells were permeabilized with 0.1% Triton X-100 in TBS for 5-10 minutes and blocked with 3% BSA-PBS for 30 minutes at room temperature. Cells were probed with a CPEB polyclonal antibody (Product # PA1-1100) in 3% BSA-PBS at a dilution of 1:100 and incubated overnight at 4°C in a humidified chamber. Cells were washed with PBST and incubated with a DyLight-conjugated secondary antibody in PBS at room temperature in the dark. Actin was stained using Alexa Fluor 554 (red) and nuclei were stained with Hoechst or DAPI (blue). Images were taken at a magnification of 60x.



CPEB1 Antibody (PA1-1100) in ICC/IF

Immunofluorescent analysis of CPEB (green) showing staining in the cytoplasm of C6 cells (right) compared to a negative control without primary antibody (left). Formalin-fixed cells were permeabilized with 0.1% Triton X-100 in TBS for 5-10 minutes and blocked with 3% BSA-PBS for 30 minutes at room temperature. Cells were probed with a CPEB polyclonal antibody (Product # PA1-1100) in 3% BSA-PBS at a dilution of 1:100 and incubated overnight at 4°C in a humidified chamber. Cells were washed with PBST and incubated with a DyLight-conjugated secondary antibody in PBS at room temperature in the dark. Nuclei were stained with Hoechst or DAPI (blue). Images were taken at a magnification of 60x.

[View more figures on thermofisher.com](http://thermofisher.com)

Western Blot (1)

Biology of reproduction

Proteasomal activity is required to initiate and to sustain translational activation of messenger RNA encoding the stem-loop-binding protein during meiotic maturation in mice.

"PA1-1100 was used in western blot to test whether CPEB degradation is required for translational activation of Slbp mRNA"

Authors: Yang Q, Allard P, Huang M, Zhang W, Clarke HJ

Species
Mouse

Dilution
1:4,000

Year
2010

Immunocytochemistry (1)

Current biology : CB

Mammalian Oocytes Locally Remodel Follicular Architecture to Provide the Foundation for Germline-Soma Communication.

"PA1-1100 was used in Immunocytochemistry-immunofluorescence to show here in mice that these structures, termed transzonal projections, are specialized filopodia whose number amplifies enormously as oocytes grow, enabling increased germ-soma communication."

Authors: El-Hayek S, Yang Q, Abbassi L, FitzHarris G, Clarke HJ

Species
Mouse

Dilution
Not Cited

Year
2018

Immunoprecipitation (2)

Journal of cell science

CPEB1 promotes differentiation and suppresses EMT in mammary epithelial cells.

"PA1-1100 was used in immunoprecipitation to study the mechanism by which knockdown of CPEB1 promotes mammary epithelial cell differentiation and blocks epithelial-to-mesenchymal transition"

Authors: Grudzien-Nogalska E, Reed BC, Rhoads RE

Species
Mouse

Dilution
Not Cited

Year
2014

The Journal of neuroscience : the official journal of the Society for Neuroscience

Time of day regulates subcellular trafficking, tripartite synaptic localization, and polyadenylation of the astrocytic Fabp7 mRNA.

"PA1-1100 was used in immunoprecipitation to investigate the circadian control of astrocytic Fabp7 mRNA trafficking and subsequent translation"

Authors: Gerstner JR, Vanderheyden WM, LaVaute T, Westmark CJ, Rouhana L, Pack AI, Wickens M, Landry CF

Species
Mouse

Dilution
Not Cited

Year
2012

For Research Use Only. Not for use in diagnostic procedures. Not for resale without express authorization. Products are warranted to operate or perform substantially in conformance with published Product specifications in effect at the time of sale, as set forth in the Production documentation, specifications and/or accompanying package inserts ("Documentation"). No claim of suitability for use in applications regulated by FDA is made. The warranty provided herein is valid only when used by properly trained individuals. Unless otherwise stated in the Documentation, this warranty is limited to one year from date of shipment when the Product is subjected to normal, proper and intended usage. This warranty does not extend to anyone other than the Buyer. Any model or sample furnished to Buyer is merely illustrative of the general type and quality of goods and does not represent that any Product will conform to such model or sample. NO OTHER WARRANTIES, EXPRESS OR IMPLIED, ARE GRANTED INCLUDING WITHOUT LIMITATION, IMPLIED WARRANTIES OF MERCHANTABILITY, FITNESS FOR ANY PARTICULAR PURPOSE, OR NON INFRINGEMENT. BUYER'S EXCLUSIVE REMEDY FOR NON-CONFORMING PRODUCTS DURING THE WARRANTY PERIOD IS LIMITED TO REPAIR, REPLACEMENT OF OR REFUND FOR THE NON-CONFORMING PRODUCT(S) AT SELLER'S SOLE OPTION. THERE IS NO OBLIGATION TO REPAIR, REPLACE OR REFUND FOR PRODUCTS AS THE RESULT OF (I) ACCIDENT, DISASTER OR EVENT OF FORCE MAJEURE, (II) MISUSE, FAULT OR NEGLIGENCE OF OR BY BUYER, (III) USE OF THE PRODUCTS IN A MANNER FOR WHICH THEY WERE NOT DESIGNED, OR (IV) IMPROPER STORAGE AND HANDLING OF THE PRODUCTS. Unless otherwise expressly stated on the Product or in the documentation accompanying the Product, the Product is intended for research only and is not to be used for any other purpose, including without limitation, unauthorized commercial uses, in vitro diagnostic uses, ex vivo or in vivo therapeutic uses, or any type of consumption by or application to human or animals.