

OGG1 Polyclonal Antibody

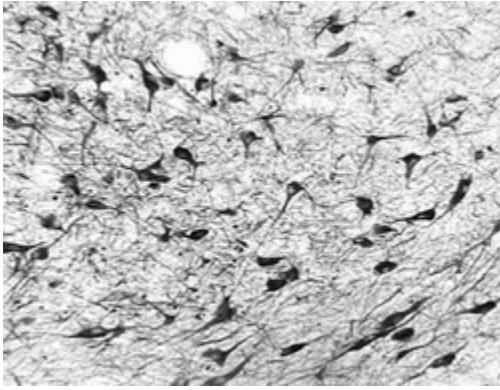
Product Details	
Size	100 µL
Species Reactivity	Human, Mouse, Non-human primate, Rat
Published Species	Human
Host/Isotope	Rabbit / IgG
Class	Polyclonal
Type	Antibody
Conjugate	Unconjugated
Immunogen	A peptide derived from the human Ogg1 (within amino acids 1-100).
Form	Liquid
Concentration	1 mg/mL
Purification	Antigen affinity chromatography
Storage buffer	PBS
Contains	0.05% sodium azide
Storage Conditions	-20° C, Avoid Freeze/Thaw Cycles
RRID	AB_2156791

Applications	Tested Dilution	Publications
ELISA (ELISA)	Assay-Dependent	-
Flow Cytometry (Flow)	Assay-Dependent	-
Immunocytochemistry (ICC)	1:100-1:200	-
Immunofluorescence (IF)	1:100-1:200	-
Immunohistochemistry (Frozen) (IHC (F))	1:25-1:100	-
Immunohistochemistry (Paraffin) (IHC (P))	1:1000	-
Immunoprecipitation (IP)	1:10-1:500	-
Immunohistochemistry (IHC)	-	1 Publication

Product Specific Information

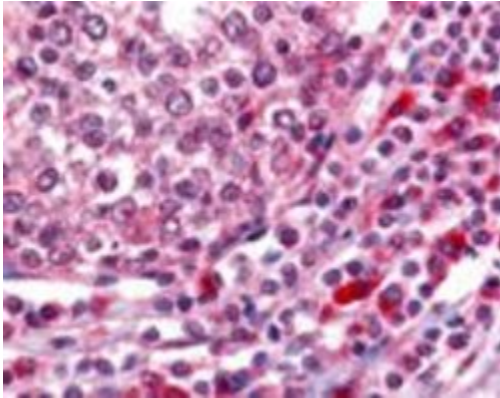
Suggested positive control: Jurkat whole cell extracts.

Product Images For OGG1 Polyclonal Antibody



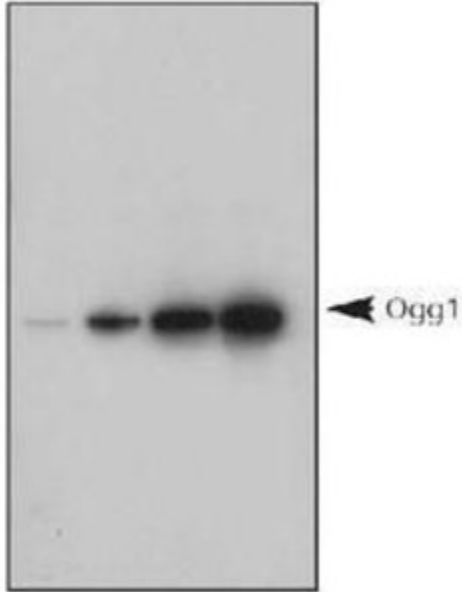
OGG1 Antibody (PA1-16505) in IHC

Immunohistochemical detection of OGG1 in formaldehyde fixed frozen sections of the substantia nigra from a Rhesus macaque (*Macaca mulatta*) using Product # PA1-16505 at 10 µg/mL.



OGG1 Antibody (PA1-16505) in IHC

Immunohistochemical staining of tonsil, germinal center and mantle zone using Product # PA1-16505.



OGG1 Antibody (PA1-16505) in WB

Western Blot analysis of a 1, 5, 10 ng titration of human recombinant Ogg1 protein, detected by PA1-16505.

[View more figures on thermofisher.com](https://www.thermofisher.com)

Immunohistochemistry (1)

Endocrine-related cancer

A *MUTYH* germline mutation is associated with small intestinal neuroendocrine tumors.

"PA1-16505 was used in Immunohistochemistry to suggest that p.(Gly396Asp) inMUTYH, and potentially other mutations in additional members of the same DNA excision-repair pathway might be involved in driving the tumorigenesis leading to familial and sporadic small intestinal neuroendocrine tumors."

Authors: Dumanski JP,Rasi C,Björklund P,Davies H,Ali AS,Grönberg M,Welin S,Sorbye H,Grønbaek H,Cunningham JL, Forsberg LA,Lind L,Ingelsson E,Stålberg P,Hellman P,Tiensuu Janson E

Species
Human

Dilution
1:500

Year
2017

For Research Use Only. Not for use in diagnostic procedures. Not for resale without express authorization. Products are warranted to operate or perform substantially in conformance with published Product specifications in effect at the time of sale, as set forth in the Production documentation, specifications and/or accompanying package inserts ("Documentation"). No claim of suitability for use in applications regulated by FDA is made. The warranty provided herein is valid only when used by properly trained individuals. Unless otherwise stated in the Documentation, this warranty is limited to one year from date of shipment when the Product is subjected to normal, proper and intended usage. This warranty does not extend to anyone other than the Buyer. Any model or sample furnished to Buyer is merely illustrative of the general type and quality of goods and does not represent that any Product will conform to such model or sample. NO OTHER WARRANTIES, EXPRESS OR IMPLIED, ARE GRANTED INCLUDING WITHOUT LIMITATION, IMPLIED WARRANTIES OF MERCHANTABILITY, FITNESS FOR ANY PARTICULAR PURPOSE, OR NON INFRINGEMENT. BUYER'S EXCLUSIVE REMEDY FOR NON-CONFORMING PRODUCTS DURING THE WARRANTY PERIOD IS LIMITED TO REPAIR, REPLACEMENT OF OR REFUND FOR THE NON-CONFORMING PRODUCT(S) AT SELLER'S SOLE OPTION. THERE IS NO OBLIGATION TO REPAIR, REPLACE OR REFUND FOR PRODUCTS AS THE RESULT OF (I) ACCIDENT, DISASTER OR EVENT OF FORCE MAJEURE, (II) MISUSE, FAULT OR NEGLIGENCE OF OR BY BUYER, (III) USE OF THE PRODUCTS IN A MANNER FOR WHICH THEY WERE NOT DESIGNED, OR (IV) IMPROPER STORAGE AND HANDLING OF THE PRODUCTS. Unless otherwise expressly stated on the Product or in the documentation accompanying the Product, the Product is intended for research only and is not to be used for any other purpose, including without limitation, unauthorized commercial uses, in vitro diagnostic uses, ex vivo or in vivo therapeutic uses, or any type of consumption by or application to human or animals.