

CYR61 Polyclonal Antibody

Product Details	
Size	100 µL
Species Reactivity	Human
Published Species	Human
Host/Isotype	Rabbit / IgG
Class	Polyclonal
Type	Antibody
Conjugate	Unconjugated
Immunogen	A synthetic peptide made to the human CYR61 protein sequence (between residues 250-350).
Form	Liquid
Concentration	1 mg/mL
Storage conditions	4° C, do not freeze
RRID	AB_2088728

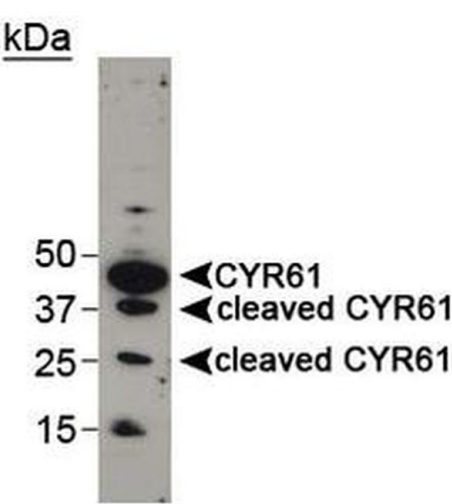
Applications	Tested Dilution	Publications
Western Blot (WB)	1:200	-
Immunocytochemistry (ICC/IF)	1:50-1:100	-
Neutralization (Neu)	-	1 Publication

Product Specific Information

This antibody does not react with mouse and rat samples despite 94% sequence homology.

Suggested positive control: antigen standard for CYR61 (transient overexpression lysate), MDA-MB-231 breast cancer cell lysate.

Product Images For CYR61 Polyclonal Antibody



CYR61 Antibody (PA1-16580) in WB
Western Blot detection of cleaved CYR61 in MDA-MB-231 cell lysate.

1 Reference

Neutralization (1)

Proceedings of the National Academy of Sciences of the United States of America	Year 2018
Oncogenic role of SFRP2 in p53-mutant osteosarcoma development via autocrine and paracrine mechanism.	Species Human
"PA1-16580 was used in Neutralization experiments to study the oncogenic role of secreted frizzled-related protein 2 (SFRP2) in p53 mutation-associated osteosarcoma development."	
Authors: Kim H,Yoo S,Zhou R,Xu A,Bernitz JM,Yuan Y,Gomes AM,Daniel MG,Su J,Demicco EG,Zhu J,Moore KA,Lee DF,Lemischka IR,Schaniel C	

For Research Use Only. Not for use in diagnostic procedures. Not for resale without express authorization. Products are warranted to operate or perform substantially in conformance with published Product specifications in effect at the time of sale, as set forth in the Production documentation, specifications and/or accompanying package inserts ("Documentation"). No claim of suitability for use in applications regulated by FDA is made. The warranty provided herein is valid only when used by properly trained individuals. Unless otherwise stated in the Documentation, this warranty is limited to one year from date of shipment when the Product is subjected to normal, proper and intended usage. This warranty does not extend to anyone other than the Buyer. Any model or sample furnished to Buyer is merely illustrative of the general type and quality of goods and does not represent that any Product will conform to such model or sample. NO OTHER WARRANTIES, EXPRESS OR IMPLIED, ARE GRANTED INCLUDING WITHOUT LIMITATION, IMPLIED WARRANTIES OF MERCHANTABILITY, FITNESS FOR ANY PARTICULAR PURPOSE, OR NON INFRINGEMENT. BUYER'S EXCLUSIVE REMEDY FOR NON-CONFORMING PRODUCTS DURING THE WARRANTY PERIOD IS LIMITED TO REPAIR, REPLACEMENT OF OR REFUND FOR THE NON-CONFORMING PRODUCT(S) AT SELLER'S SOLE OPTION. THERE IS NO OBLIGATION TO REPAIR, REPLACE OR REFUND FOR PRODUCTS AS THE RESULT OF (I) ACCIDENT, DISASTER OR EVENT OF FORCE MAJEURE, (II) MISUSE, FAULT OR NEGLIGENCE OF OR BY BUYER, (III) USE OF THE PRODUCTS IN A MANNER FOR WHICH THEY WERE NOT DESIGNED, OR (IV) IMPROPER STORAGE AND HANDLING OF THE PRODUCTS. Unless otherwise expressly stated on the Product or in the documentation accompanying the Product, the Product is intended for research only and is not to be used for any other purpose, including without limitation, unauthorized commercial uses, in vitro diagnostic uses, ex vivo or in vivo therapeutic uses, or any type of consumption by or application to human or animals.