

VEGF Receptor 2 Polyclonal Antibody

Product Details	
Size	100 µL
Species Reactivity	Human, Mouse
Host/Isotope	Rabbit / IgG
Class	Polyclonal
Type	Antibody
Conjugate	Unconjugated
Immunogen	A synthetic peptide made to an internal region of the murine VEGFR2 protein sequence (between residues 1200-1300).
Form	Liquid
Concentration	2.6 mg/mL
Purification	Antigen affinity chromatography
Storage buffer	tris glycine with 0.15M NaCl
Contains	0.05% sodium azide
Storage Conditions	4° C, do not freeze
RRID	AB_568766

Applications	Tested Dilution	Publications
Immunocytochemistry (ICC)	1:50-1:500	-
Immunofluorescence (IF)	1:50-1:500	-
Western Blot (WB)	2 µg/mL	-

Product Specific Information

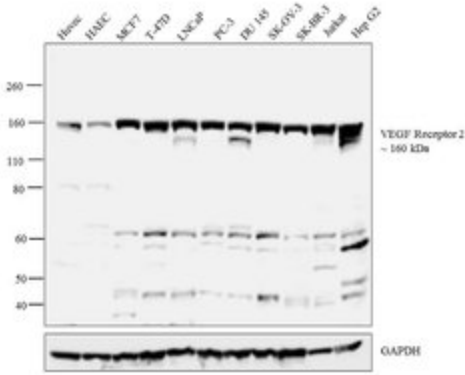
The target sequence has 100% sequence homology with mouse and rat.

Suggested positive control: HUVEC lysate, antigen standard for KDR (transient overexpression lysate).

Product Images For VEGF Receptor 2 Polyclonal Antibody

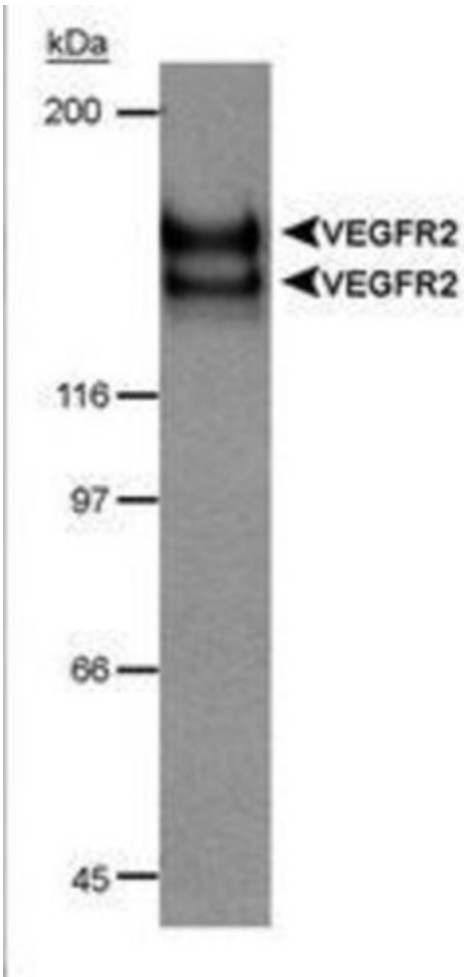
VEGF Receptor 2 Antibody (PA1-16613) in WB

Western blot analysis was performed on whole cell extracts of Huvec (Lane 1), HAEC (Lane 2), MCF7 (Lane 3), T-47D (Lane 4), LNCaP (Lane 5), PC-3 (Lane 6), DU 145 (Lane 7), SK-OV-3 (Lane 8), SK-BR-3 (Lane 9), Jurkat (Lane 10) and Hep G2 (Lane 11). The blot was probed with Anti-VEGF Receptor 2 Polyclonal Antibody (Product # PA1-16613, 2 µg/ml) and detected by chemiluminescence using Goat anti-Rabbit IgG (H+L) Superclonal™ Secondary Antibody, HRP conjugate (Product # A27036, 0.25 µg/ml, 1:4000 dilution). A 160 kDa band corresponding to VEGF Receptor 2 was observed across the cell lines tested.



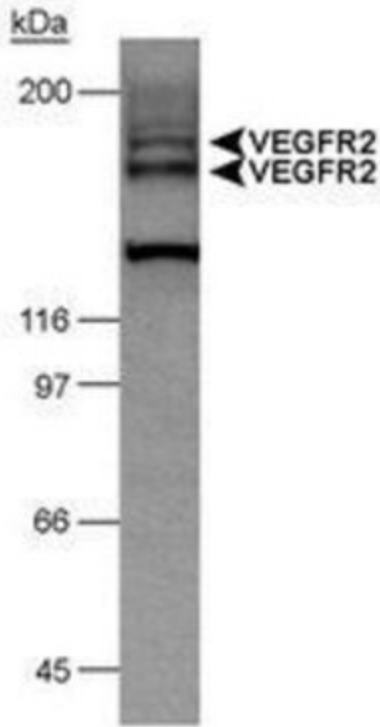
VEGF Receptor 2 Antibody (PA1-16613) in WB

Western Blot detection of VEGFR-2 doublet in CSF-1 receptor/VEGFR2 chimera transfected lysate (20 µg) using Product # PA1-16613 (6 µg/mL). ECL detection 30 seconds.



VEGF Receptor 2 Antibody (PA1-16613) in WB

Western Blot detection of VEGFR-2 doublet in VEGFR-2 induced HUVEC lysate (50 µg) using Product # PA1-16613 (4 µg/mL). ECL detection 2.5 minutes.



For Research Use Only. Not for use in diagnostic procedures. Not for resale without express authorization. Products are warranted to operate or perform substantially in conformance with published Product specifications in effect at the time of sale, as set forth in the Production documentation, specifications and/or accompanying package inserts ("Documentation"). No claim of suitability for use in applications regulated by FDA is made. The warranty provided herein is valid only when used by properly trained individuals. Unless otherwise stated in the Documentation, this warranty is limited to one year from date of shipment when the Product is subjected to normal, proper and intended usage. This warranty does not extend to anyone other than the Buyer. Any model or sample furnished to Buyer is merely illustrative of the general type and quality of goods and does not represent that any Product will conform to such model or sample. NO OTHER WARRANTIES, EXPRESS OR IMPLIED, ARE GRANTED INCLUDING WITHOUT LIMITATION, IMPLIED WARRANTIES OF MERCHANTABILITY, FITNESS FOR ANY PARTICULAR PURPOSE, OR NON INFRINGEMENT. BUYER'S EXCLUSIVE REMEDY FOR NON-CONFORMING PRODUCTS DURING THE WARRANTY PERIOD IS LIMITED TO REPAIR, REPLACEMENT OF OR REFUND FOR THE NON-CONFORMING PRODUCT(S) AT SELLER'S SOLE OPTION. THERE IS NO OBLIGATION TO REPAIR, REPLACE OR REFUND FOR PRODUCTS AS THE RESULT OF (I) ACCIDENT, DISASTER OR EVENT OF FORCE MAJEURE, (II) MISUSE, FAULT OR NEGLIGENCE OF OR BY BUYER, (III) USE OF THE PRODUCTS IN A MANNER FOR WHICH THEY WERE NOT DESIGNED, OR (IV) IMPROPER STORAGE AND HANDLING OF THE PRODUCTS. Unless otherwise expressly stated on the Product or in the documentation accompanying the Product, the Product is intended for research only and is not to be used for any other purpose, including without limitation, unauthorized commercial uses, in vitro diagnostic uses, ex vivo or in vivo therapeutic uses, or any type of consumption by or application to human or animals.