

LRRK2 Polyclonal Antibody

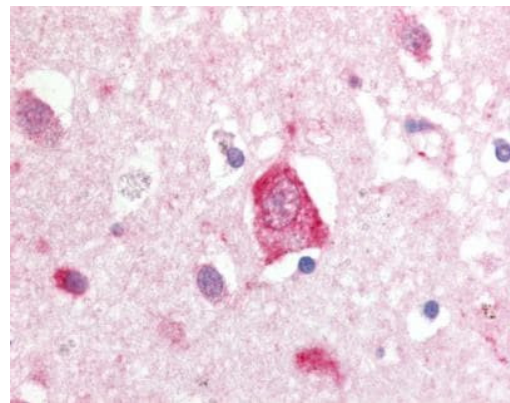
Product Details	
Size	100 µL
Species Reactivity	Bovine, C. elegans, Human, Mouse, Plant
Published Species	Fruit fly
Host/Isotype	Rabbit / IgG
Class	Polyclonal
Type	Antibody
Conjugate	Unconjugated
Immunogen	Synthetic peptide corresponding to the C-terminal residues 2500-2527 of human LRRK2.
Form	Liquid
Concentration	1 mg/mL
Purification	Antigen affinity chromatography
Storage buffer	PBS
Contains	0.01% sodium azide
Storage conditions	Store at 4°C short term. For long term storage, store at -20°C, avoiding freeze/thaw cycles.
RRID	AB_568606

Applications	Tested Dilution	Publications
Western Blot (WB)	1-2 µg/mL	1 Publication
Immunohistochemistry (Paraffin) (IHC (P))	1:200	-
Immunohistochemistry (Frozen) (IHC (F))	Assay-Dependent	-
Immunocytochemistry (ICC/IF)	2-5 µg/mL	-
Flow Cytometry (Flow)	2.5 µg/mL	-
Immunoprecipitation (IP)	1:10-1:500	-

Product Specific Information

The target sequence has 87% sequence homology with rat.

Product Images For LRRK2 Polyclonal Antibody



LRRK2 Antibody (PA1-16770) in IHC (P)
Immunohistochemical analysis of LRRK2 in human brain, Putamen, Neurons and Glia using a 60X magnification. Samples were incubated in LRRK2 polyclonal antibody (Product # PA1-16770).

1 Reference

Western Blot (1)

Brain research	Year 2017
Knockdown transgenic Lrrk Drosophila resists paraquat-induced locomotor impairment and neurodegeneration: A therapeutic strategy for Parkinson's disease.	Species Fruit fly
"PA116770 was used in western blot to find that knocking down the leucine-rich repeat kinase gene by RNAi in DAergic neurons untreated or treated with paraquat neither affects the number of DAergic clusters, tyrosine hydroxylase protein levels, lifespan nor locomotor activity"	Dilution 1:5000
Authors: Quintero-Espinosa D,Jimenez-Del-Rio M,Velez-Pardo C	

For Research Use Only. Not for use in diagnostic procedures. Not for resale without express authorization. Products are warranted to operate or perform substantially in conformance with published Product specifications in effect at the time of sale, as set forth in the Production documentation, specifications and/or accompanying package inserts ("Documentation"). No claim of suitability for use in applications regulated by FDA is made. The warranty provided herein is valid only when used by properly trained individuals. Unless otherwise stated in the Documentation, this warranty is limited to one year from date of shipment when the Product is subjected to normal, proper and intended usage. This warranty does not extend to anyone other than the Buyer. Any model or sample furnished to Buyer is merely illustrative of the general type and quality of goods and does not represent that any Product will conform to such model or sample. NO OTHER WARRANTIES, EXPRESS OR IMPLIED, ARE GRANTED INCLUDING WITHOUT LIMITATION, IMPLIED WARRANTIES OF MERCHANTABILITY, FITNESS FOR ANY PARTICULAR PURPOSE, OR NON INFRINGEMENT. BUYER'S EXCLUSIVE REMEDY FOR NON-CONFORMING PRODUCTS DURING THE WARRANTY PERIOD IS LIMITED TO REPAIR, REPLACEMENT OF OR REFUND FOR THE NON-CONFORMING PRODUCT(S) AT SELLER'S SOLE OPTION. THERE IS NO OBLIGATION TO REPAIR, REPLACE OR REFUND FOR PRODUCTS AS THE RESULT OF (I) ACCIDENT, DISASTER OR EVENT OF FORCE MAJEURE, (II) MISUSE, FAULT OR NEGLIGENCE OF OR BY BUYER, (III) USE OF THE PRODUCTS IN A MANNER FOR WHICH THEY WERE NOT DESIGNED, OR (IV) IMPROPER STORAGE AND HANDLING OF THE PRODUCTS. Unless otherwise expressly stated on the Product or in the documentation accompanying the Product, the Product is intended for research only and is not to be used for any other purpose, including without limitation, unauthorized commercial uses, in vitro diagnostic uses, ex vivo or in vivo therapeutic uses, or any type of consumption by or application to human or animals.