

SR-BI Polyclonal Antibody

Product Details	
Size	100 µL
Species Reactivity	Hamster, Human, Mink, Mouse, Non-human primate, Pig, Rabbit, Rat
Published Species	Human
Host/Isotype	Rabbit / IgG
Class	Polyclonal
Type	Antibody
Conjugate	Unconjugated
Immunogen	Synthetic peptide corresponding to a region within the residues 450-509 of mouse Scavenger Receptor-BI.
Form	Liquid
Concentration	1 mg/mL
Purification	Antigen affinity chromatography
Storage buffer	PBS
Contains	0.02% sodium azide
Storage conditions	Store at 4°C short term. For long term storage, store at -20°C, avoiding freeze/thaw cycles.
RRID	AB_2269859

Applications	Tested Dilution	Publications
Western Blot (WB)	1:1,000-1:5,000	1 Publication
Immunohistochemistry (Paraffin) (IHC (P))	2.5-5 µg/mL	-
Immunohistochemistry (Frozen) (IHC (F))	2.5-5 µg/mL	-
Immunocytochemistry (ICC/IF)	1:50-1:1,000	1 Publication
Flow Cytometry (Flow)	1:10-1:1,000	-
Immunoprecipitation (IP)	1:10-1:500	-
Neutralization (Neu)	Assay-Dependent	-
in situ PLA (PLA)	Assay-Dependent	-

Product Specific Information

Suggested positive control: antigen standard for SCARB1 (transient overexpression lysate).

Product Images For SR-BI Polyclonal Antibody

SR-BI Antibody (PA1-16788) in WB

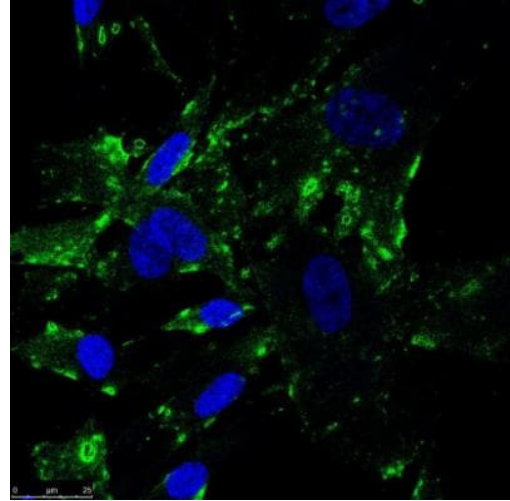
Western blot was performed using Anti-SR-BI Polyclonal Antibody (Product # PA1-16788) and a 75 kDa band corresponding to SCARB1 was observed across across the cell lines and tissues tested. Membrane enriched extracts (30 µg lysate) of HeLa (Lane 1), Hep G2 (Lane 2), PC-3 (Lane 3), Jurkat (Lane 4), MOLT-4 (Lane 5), Mouse Brain (Lane 6), Mouse Kidney (Lane 7), Mouse Ovary (Lane 8), Mouse Adrenal Gland (Lane 9), Mouse Liver (Lane 10), Rat Liver (Lane 11) were electrophoresed using NuPAGE™ 4-12% Bis-Tris Protein Gel (Product # NP0322BOX). Resolved proteins were then transferred onto a nitrocellulose membrane (Product # IB23001) by iBlot® 2 Dry Blotting System (Product # IB21001). The blot was probed with the primary antibody (1:1000 dilution) and detected by chemiluminescence with Goat anti-Rabbit IgG (Heavy Chain) Superclonal™ Recombinant Secondary Antibody, HRP (Product # A27036, 1:20000 dilution) using the iBright™ FL1500 Imaging System (Product # A44115). Chemiluminescent detection was performed using SuperSignal™ West Pico PLUS Chemiluminescent Substrate (Product # 34580).

SR-BI Antibody (PA1-16788)

Antibody specificity was demonstrated by detection of differential basal expression of the target across the cell lines and tissues tested owing to their inherent genetic constitution. Relative expression of SCARB1 was observed in HeLa, Hep G2, PC3 in comparison to Jurkat and MOLT-4 using Anti-SR-BI Polyclonal Antibody (Product # PA1-16788) in Western Blot. {RE}

SR-BI Antibody (PA1-16788) in ICC/IF

Immunocytochemistry analysis of SR-BI in human fibroblast samples fixed in 4% PFA and permeabilized in PBS (0.2% Tween). Samples were incubated in SR-BI polyclonal antibody (Product # PA1-16788) using a dilution of 1:100 dilution in PBS (0.1% Tween) with 1% BSA followed by anti-rabbit conjugate to Alexa Fluor 488. Primary incubation overnight at 4 °C. SR-BI is shown in green and nucleus in blue (Hoescht 33342 stain).



View more figures on thermofisher.com

Western Blot (1)

Journal of cellular biochemistry	Year 2019
Insulin increases cholesterol uptake, lipid droplet content, and apolipoprotein B secretion in CaCo-2 cells by upregulating SR-BI via a PI3K, AKT, and mTOR-dependent pathway.	Species Human
"Published figure using SR-BI polyclonal antibody (Product # PA1-16788) in Immunocytochemistry"	Dilution 1:2000
Authors: Fuentes M,Santander N,Cortés V	

Immunocytochemistry (1)

Journal of cellular biochemistry	Year 2019
Insulin increases cholesterol uptake, lipid droplet content, and apolipoprotein B secretion in CaCo-2 cells by upregulating SR-BI via a PI3K, AKT, and mTOR-dependent pathway.	Species Human
"Published figure using SR-BI polyclonal antibody (Product # PA1-16788) in Immunocytochemistry"	Dilution 1:2000
Authors: Fuentes M,Santander N,Cortés V	

For Research Use Only. Not for use in diagnostic procedures. Not for resale without express authorization. Products are warranted to operate or perform substantially in conformance with published Product specifications in effect at the time of sale, as set forth in the Production documentation, specifications and/or accompanying package inserts ("Documentation"). No claim of suitability for use in applications regulated by FDA is made. The warranty provided herein is valid only when used by properly trained individuals. Unless otherwise stated in the Documentation, this warranty is limited to one year from date of shipment when the Product is subjected to normal, proper and intended usage. This warranty does not extend to anyone other than the Buyer. Any model or sample furnished to Buyer is merely illustrative of the general type and quality of goods and does not represent that any Product will conform to such model or sample. NO OTHER WARRANTIES, EXPRESS OR IMPLIED, ARE GRANTED INCLUDING WITHOUT LIMITATION, IMPLIED WARRANTIES OF MERCHANTABILITY, FITNESS FOR ANY PARTICULAR PURPOSE, OR NON INFRINGEMENT. BUYER'S EXCLUSIVE REMEDY FOR NON-CONFORMING PRODUCTS DURING THE WARRANTY PERIOD IS LIMITED TO REPAIR, REPLACEMENT OF OR REFUND FOR THE NON-CONFORMING PRODUCT(S) AT SELLER'S SOLE OPTION. THERE IS NO OBLIGATION TO REPAIR, REPLACE OR REFUND FOR PRODUCTS AS THE RESULT OF (I) ACCIDENT, DISASTER OR EVENT OF FORCE MAJEURE, (II) MISUSE, FAULT OR NEGLIGENCE OF OR BY BUYER, (III) USE OF THE PRODUCTS IN A MANNER FOR WHICH THEY WERE NOT DESIGNED, OR (IV) IMPROPER STORAGE AND HANDLING OF THE PRODUCTS. Unless otherwise expressly stated on the Product or in the documentation accompanying the Product, the Product is intended for research only and is not to be used for any other purpose, including without limitation, unauthorized commercial uses, in vitro diagnostic uses, ex vivo or in vivo therapeutic uses, or any type of consumption by or application to human or animals.