

Cypridina luciferase Polyclonal Antibody

Product Details	
Size	100 µg
Species Reactivity	Luciferase
Host/Isotype	Rabbit / IgG
Class	Polyclonal
Type	Antibody
Conjugate	Unconjugated
Immunogen	Purified recombinant Cypridina luciferase expressed in E. coli.
Form	Liquid
Concentration	1 mg/mL
Purification	Protein G
Storage buffer	PBS with 1mg/mL BSA, 30% glycerol
Contains	0.05% sodium azide
Storage Conditions	-20°C
RRID	AB_2539913

Applications	Tested Dilution	Publications
Western Blot (WB)	1:1000-1:10,000	-

Product Specific Information

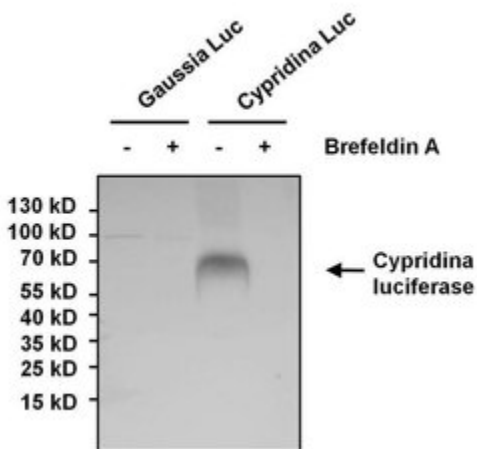
Western blot analysis of PA1-182 detects a ~62 kDa protein in the supernatant of Cypridina luciferase-secreting cells.

PA1-182 can be used for activity-independent verification of Cypridina luciferase expression.

Product Images For Cypridina luciferase Polyclonal Antibody

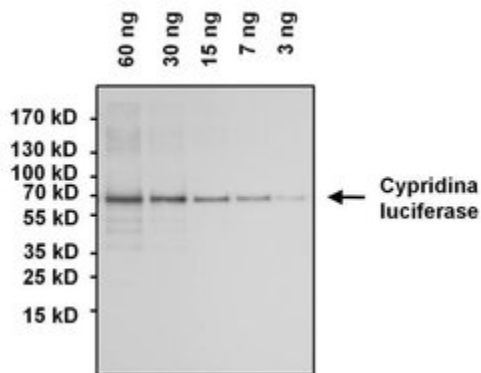
Cypridina luciferase Antibody (PA1-182) in WB

Western blot analysis of secreted Cypridina luciferase was performed using 293T cells stably expressing Gaussia or Cypridina luciferase. Cells were grown overnight in serum free (B27 supplemented) DMEM with or without 10uM Brefeldin A. Equal amounts (75 µg) of approximately 10x concentrated cell culture medium from treated or untreated cells, and 10 µL of PageRuler Prestained Protein Ladder (Product # 26616) were loaded onto a 4-20% Tris-HCl polyacrylamide gel. Proteins were transferred to a PVDF membrane using the G2 Fast Blotter (Product # 62288), and blocked with StartingBlock T20 (TBS) Blocking Buffer (Product # 37543) for 1 hour at room temperature. Cypridina luciferase was detected at ~62 kDa using a Cypridina luciferase polyclonal antibody (Product # PA1-182) at a dilution of 1:5,000 in StartingBlock T20 (TBS) Blocking Buffer (Product # 37543) overnight at 4C on a rocking platform, followed by an HRP-conjugated goat anti-rabbit IgG secondary antibody (Product # 31460) at a dilution of 1:20,000 for 1 hour. Chemiluminescent detection was performed using SuperSignal West Dura (Product # 34075). Images were acquired on a Thermo Scientific myECL Imager (Product # 62236).



Cypridina luciferase Antibody (PA1-182) in WB

Western blot analysis of Cypridina luciferase was performed by loading the indicated amounts of recombinant Cypridina luciferase protein, and 10 µL of PageRuler Prestained Protein Ladder (Product # 26616) onto a 4-20% Tris-HCl polyacrylamide gel. Proteins were transferred to a PVDF membrane using the G2 Fast Blotter (Product # 62288), and blocked with StartingBlock T20 (TBS) Blocking Buffer (Product # 37543) for 1 hour at room temperature. Cypridina luciferase was detected at 62 kDa using a Cypridina luciferase polyclonal antibody (Product # PA1-182) at a dilution of 1:10,000 in StartingBlock T20 (TBS) Blocking Buffer (Product # 37543) overnight at 4C on a rocking platform, followed by an HRP-conjugated goat anti-rabbit IgG secondary antibody (Product # 31460) at a dilution of 1:20,000 for 1 hour. Chemiluminescent detection was performed using SuperSignal West Dura (Product # 34075). Images were acquired on a Thermo Scientific myECL Imager (Product # 62236).



For Research Use Only. Not for use in diagnostic procedures. Not for resale without express authorization. Products are warranted to operate or perform substantially in conformance with published Product specifications in effect at the time of sale, as set forth in the Production documentation, specifications and/or accompanying package inserts ("Documentation"). No claim of suitability for use in applications regulated by FDA is made. The warranty provided herein is valid only when used by properly trained individuals. Unless otherwise stated in the Documentation, this warranty is limited to one year from date of shipment when the Product is subjected to normal, proper and intended usage. This warranty does not extend to anyone other than the Buyer. Any model or sample furnished to Buyer is merely illustrative of the general type and quality of goods and does not represent that any Product will conform to such model or sample. NO OTHER WARRANTIES, EXPRESS OR IMPLIED, ARE GRANTED INCLUDING WITHOUT LIMITATION, IMPLIED WARRANTIES OF MERCHANTABILITY, FITNESS FOR ANY PARTICULAR PURPOSE, OR NON INFRINGEMENT. BUYER'S EXCLUSIVE REMEDY FOR NON-CONFORMING PRODUCTS DURING THE WARRANTY PERIOD IS LIMITED TO REPAIR, REPLACEMENT OF OR REFUND FOR THE NON-CONFORMING PRODUCT(S) AT SELLER'S SOLE OPTION. THERE IS NO OBLIGATION TO REPAIR, REPLACE OR REFUND FOR PRODUCTS AS THE RESULT OF (I) ACCIDENT, DISASTER OR EVENT OF FORCE MAJEURE, (II) MISUSE, FAULT OR NEGLIGENCE OF OR BY BUYER, (III) USE OF THE PRODUCTS IN A MANNER FOR WHICH THEY WERE NOT DESIGNED, OR (IV) IMPROPER STORAGE AND HANDLING OF THE PRODUCTS. Unless otherwise expressly stated on the Product or in the documentation accompanying the Product, the Product is intended for research only and is not to be used for any other purpose, including without limitation, unauthorized commercial uses, in vitro diagnostic uses, ex vivo or in vivo therapeutic uses, or any type of consumption by or application to human or animals.