

PSMA5 Polyclonal Antibody

Product Details	
Size	100 µg
Species Reactivity	Hamster, Human, Mouse, Rat
Published Species	Rat, Human, Mouse
Host/Isotype	Rabbit / IgG
Class	Polyclonal
Type	Antibody
Conjugate	Unconjugated
Immunogen	Synthetic peptide corresponding to residues C A(120) L Q F G E E D A D P G A M(133) of human proteasome 20S subunit alpha 5.
Form	Liquid
Concentration	1 mg/mL
Purification	Antigen affinity chromatography
Storage buffer	PBS with 1mg/mL BSA
Contains	0.05% sodium azide
Storage conditions	-20° C, Avoid Freeze/Thaw Cycles
RRID	AB_2171717

Applications	Tested Dilution	Publications
Western Blot (WB)	1-3 µg/mL	3 Publications
Immunocytochemistry (ICC/IF)	2 µg/mL	3 Publications

Product Specific Information

PA1-1962 detects proteasome 20S subunit alpha 5 from human, rat, mouse and hamster cell lysates.

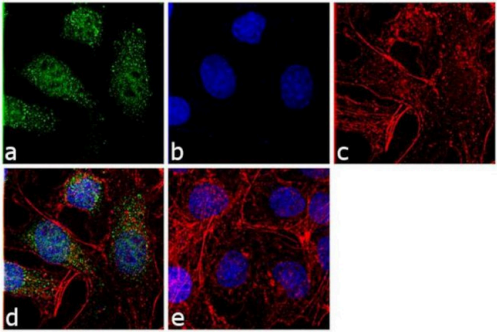
PA1-1962 has been successfully used in Western blot and immunofluorescence procedures. By Western blot, this antibody detects a 26.5 kDa protein representing proteasome 20S subunit alpha 5 from human, rat, mouse, and hamster cell extracts.

PA1-1962 immunogen is a synthetic peptide corresponding to residues C A(120) L Q F G E E D A D P G A M(133) of human proteasome 20S subunit alpha 5. PA1-1962 immunizing peptide (Cat. # PEP-210) is available for use in neutralization and control experiments.

Product Images For PSMA5 Polyclonal Antibody

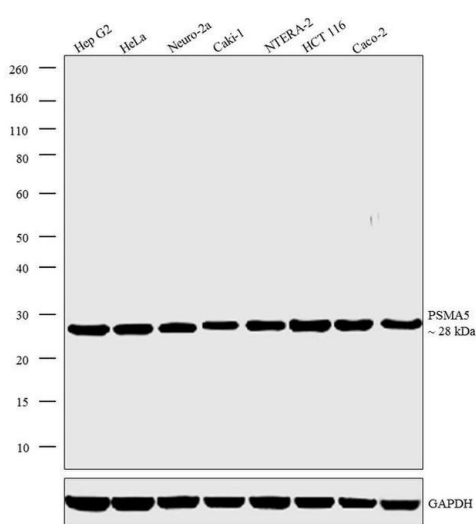
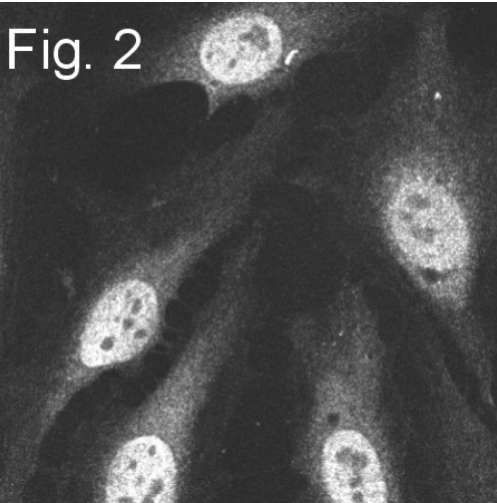
PSMA5 Antibody (PA1-1962) in ICC/IF

Immunofluorescence analysis of Proteasome 20S Subunit alpha-5 was performed using 70% confluent log phase Hep G2 cells. The cells were fixed with 4% paraformaldehyde for 10 minutes, permeabilized with 0.1% Triton™ X-100 for 10 minutes, and blocked with 1% BSA for 1 hour at room temperature. The cells were labeled with PSMA5 Rabbit Polyclonal (Product # PA1-1962) at 2 µg /mL in 0.1% BSA and incubated for 3 hours at room temperature and then labeled with Goat anti-Rabbit IgG (Heavy Chain) Superclonal™ Secondary Antibody, Alexa Fluor® 488 conjugate (Product # A27034) at a dilution of 1:2000 for 45 minutes at room temperature (Panel a: green). Nuclei (Panel b: blue) were stained with SlowFade® Gold Antifade Mountant with DAPI (Product # S36938). F-actin (Panel c: red) was stained with Rhodamine Phalloidin (Product # R415, 1: 300). Panel d represents the merged image showing cytoplasmic and nuclear localization. Panel e shows the no primary antibody control. The images were captured at 60X magnification.



PSMA5 Antibody (PA1-1962) in ICC/IF

Immunofluorescence of HeLa cells using Product # PA1-1962.



PSMA5 Antibody (PA1-1962) in WB

Western blot analysis was performed on whole cell extracts (30 µg lysate) of Hep G2 (Lane 1), HeLa (Lane 2), Neuro-2a (Lane 3), Caki-1 (Lane 4), NTERA-2 (Lane 5), HCT 116 (Lane 6), Caco-2 (Lane 7), and tissue extract (30 µg lysate) of Mouse Liver (Lane 8). The blots were probed with Anti-PSMA5 Rabbit Polyclonal Antibody (Product # PA1-1962, 1 µg/mL) and detected by chemiluminescence using Goat anti-Rabbit IgG (Heavy Chain) Superclonal™ Secondary Antibody, HRP conjugate (Product # A27036, 0.25 µg/mL, 1:4000 dilution). A 28 kDa band corresponding to PSMA5 was observed across the cell lines and tissue tested. Known quantity of protein samples were electrophoresed using Novex® NuPAGE® 4-12 % Bis-Tris gel (Product # NP0321BOX), XCell SureLock™ Electrophoresis System (Product # EI0002) and Novex® Sharp Pre-Stained Protein Standard (Product # LC5800). Resolved proteins were then transferred onto a nitrocellulose membrane with iBlot® 2 Dry Blotting System (Product # IB21001). The membrane was probed with the relevant primary and secondary Antibody following blocking with 5 % skimmed milk. Chemiluminescent detection was performed using Pierce™ ECL Western Blotting Substrate (Product # 32106).

View more figures on thermofisher.com

Western Blot (3)

Journal of molecular biology	Year 2018
Network Analysis of UBE3A/E6AP-Associated Proteins Provides Connections to Several Distinct Cellular Processes.	
"Published figure using PSMA5 polyclonal antibody (Product # PA1-1962) in Western Blot"	
Authors: Martínez-Noël G,Luck K,Kühnle S,Desbuleux A,Szajner P,Galligan JT,Rodriguez D,Zheng L,Boyland K, Leclere F,Zhong Q,Hill DE,Vidal M,Howley PM	
Nucleic acids research	Year 2012
ATM regulates proteasome-dependent subnuclear localization of TRF1, which is important for telomere maintenance.	Species Human
"PA1-1962 was used in western blot to study the role of ATM in telomere function"	
Authors: McKerlie M,Lin S,Zhu XD	

View more WB references on thermofisher.com

Immunocytochemistry (3)

Cell reports	Year 2019
Active Protein Neddylation or Ubiquitylation Is Dispensable for Stress Granule Dynamics.	Species Human
"PA1-1962 was used in Immunocytochemistry-immunofluorescence to study whether active ubiquitylation or neddylation modulates stress granule dynamics."	
Authors: Markmiller S,Fulzele A,Higgins R,Leonard M,Yeo GW,Bennett EJ	
The Journal of cell biology	Year 2015
The transition zone protein Rpgrip1l regulates proteasomal activity at the primary cilium.	Species Mouse
"Published figure using PSMA5 polyclonal antibody (Product # PA1-1962) in Immunofluorescence"	
Authors: Gerhardt C,Lier JM,Burmühl S,Struchtrup A,Deutschmann K,Vetter M,Leu T,Reeg S,Grune T,Rüther U	

View more ICC/IF references on thermofisher.com

More applications with references on thermofisher.com

For Research Use Only. Not for use in diagnostic procedures. Not for resale without express authorization. Products are warranted to operate or perform substantially in conformance with published Product specifications in effect at the time of sale, as set forth in the Production documentation, specifications and/or accompanying package inserts ("Documentation"). No claim of suitability for use in applications regulated by FDA is made. The warranty provided herein is valid only when used by properly trained individuals. Unless otherwise stated in the Documentation, this warranty is limited to one year from date of shipment when the Product is subjected to normal, proper and intended usage. This warranty does not extend to anyone other than the Buyer. Any model or sample furnished to Buyer is merely illustrative of the general type and quality of goods and does not represent that any Product will conform to such model or sample. NO OTHER WARRANTIES, EXPRESS OR IMPLIED, ARE GRANTED INCLUDING WITHOUT LIMITATION, IMPLIED WARRANTIES OF MERCHANTABILITY, FITNESS FOR ANY PARTICULAR PURPOSE, OR NON INFRINGEMENT. BUYER'S EXCLUSIVE REMEDY FOR NON-CONFORMING PRODUCTS DURING THE WARRANTY PERIOD IS LIMITED TO REPAIR, REPLACEMENT OF OR REFUND FOR THE NON-CONFORMING PRODUCT(S) AT SELLER'S SOLE OPTION. THERE IS NO OBLIGATION TO REPAIR, REPLACE OR REFUND FOR PRODUCTS AS THE RESULT OF (I) ACCIDENT, DISASTER OR EVENT OF FORCE MAJEURE, (II) MISUSE, FAULT OR NEGLIGENCE OF OR BY BUYER, (III) USE OF THE PRODUCTS IN A MANNER FOR WHICH THEY WERE NOT DESIGNED, OR (IV) IMPROPER STORAGE AND HANDLING OF THE PRODUCTS. Unless otherwise expressly stated on the Product or in the documentation accompanying the Product, the Product is intended for research only and is not to be used for any other purpose, including without limitation, unauthorized commercial uses, in vitro diagnostic uses, ex vivo or in vivo therapeutic uses, or any type of consumption by or application to human or animals.