

# APH1 Polyclonal Antibody

Product Details	
Size	100 µg
Species Reactivity	Human, Mouse
Published Species	Hamster, Mouse, Human
Host/Isotype	Rabbit / IgG
Class	Polyclonal
Type	Antibody
Conjugate	Unconjugated
Immunogen	Synthetic peptide, KLH conjugated, corresponding to residues C (245) R R Q E D S R V M V Y S A L R I P P E D (265) of human APH-1aL/CT.
Form	Liquid
Concentration	0.69 mg/mL
Purification	Affinity chromatography
Storage buffer	PBS with 1mg/mL BSA
Contains	0.005% sodium azide
Storage conditions	-20° C, Avoid Freeze/Thaw Cycles
RRID	AB_2227105

Applications	Tested Dilution	Publications
Western Blot (WB)	1:1,000	11 Publications
Immunocytochemistry (ICC/IF)	2 µg/mL	-
Immunoprecipitation (IP)	Assay-dependent	-

## Product Specific Information

PA1-2010 detects APH-1 in human and mouse samples.

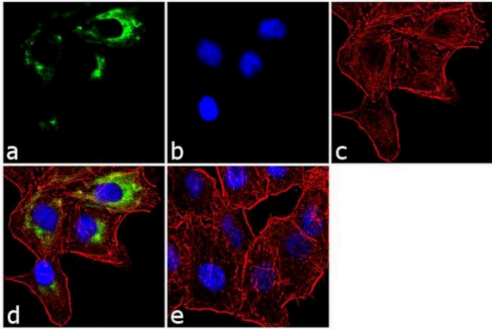
PA1-2010 has been successfully used in immunofluorescent, immunoprecipitation, and Western blot procedures. By Western blot, this antibody detects a ~28 kDa protein representing APH-1 in mouse brain and kidney extracts.

The PA1-2010 immunogen is a Synthetic peptide, KLH conjugated, corresponding to residues C (245) R R Q E D S R V M V Y S A L R I P P E D (265) of the C-Terminal domain of the long isoform of APH-1a. This polyclonal antibody has been referred to as, O2C2 in the reference listed above.

Product Images For APH1 Polyclonal Antibody

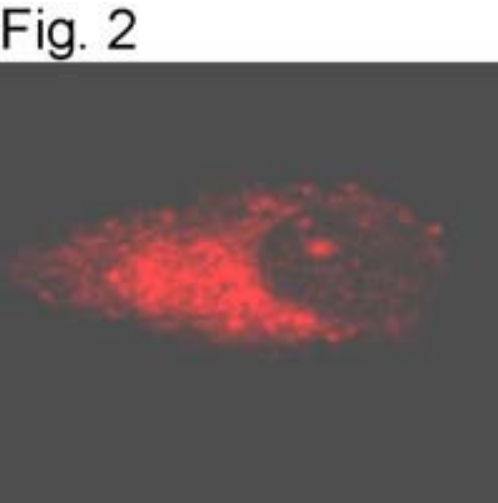
APH1 Antibody (PA1-2010) in ICC/IF

Immunofluorescent analysis of APH-1 was performed using 70% confluent log phase A549 cells. The cells were fixed with 4% paraformaldehyde for 10 minutes, permeabilized with 0.1% Triton™ X-100 for 10 minutes, and blocked with 1% BSA for 1 hour at room temperature. The cells were labeled with APH-1 Rabbit Polyclonal Antibody (Product # PA1-2010) at 2 µg/mL in 0.1% BSA and incubated for 3 hours at room temperature and then labeled with Goat anti-Rabbit IgG (Heavy Chain) Superclonal™ Secondary Antibody, Alexa Fluor® 488 conjugate (Product # A27034) a dilution of 1:2000 for 45 minutes at room temperature (Panel a: green). Nuclei (Panel b: blue) were stained with SlowFade® Gold Antifade Mountant with DAPI (Product # S36938). F-actin (Panel c: red) was stained with Alexa Fluor® 555 Rhodamine Phalloidin (Product # R415, 1:300). Panel d represents the merged image showing cytoplasmic localization. Panel e shows the no primary antibody control. The images were captured at 60X magnification.



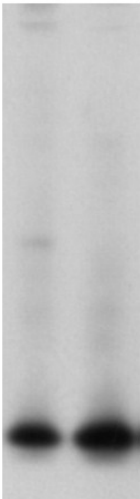
APH1 Antibody (PA1-2010) in ICC/IF

Immunofluorescence staining of APH-1 in human KNS-42 glioma cells using Product # PA1-2010.



APH1 Antibody (PA1-2010) in WB

Western blot of APH-1 in mouse brain and kidney extracts using Product # PA1-2010.



~18 kDa

Fig. 1

Fig. 2

View more figures on [thermofisher.com](https://thermofisher.com)

Western Blot (11)

<p>Alzheimer's research &amp; therapy</p> <p><b>Gossypetin ameliorates 5xFAD spatial learning and memory through enhanced phagocytosis against A.</b></p> <p>"PA1-2010 was used in Western Blotting to study how gossypetin showed protective effects against AD by enhancing microglial A phagocytosis."</p> <p>Authors: Jo KW, Lee D, Cha DG, Oh E, Choi YH, Kim S, Park ES, Kim JK, Kim KT</p>	<p>Year 2022</p> <p>Species Mouse</p> <p>Dilution 1:100</p>
<p>The Journal of cell biology</p> <p><b>Physical and functional interaction between the - and -secretases: A new model of regulated intramembrane proteolysis.</b></p> <p>"PA1-2010 was used in western blot to identify and characterize a multiprotease complex containing both alpha- and gamma-secretase"</p> <p>Authors: Chen AC, Kim S, Shepardson N, Patel S, Hong S, Selkoe DJ</p>	<p>Year 2015</p> <p>Species Hamster</p>

[View more WB references on thermofisher.com](#)

More applications with references on thermofisher.com

For Research Use Only. Not for use in diagnostic procedures. Not for resale without express authorization. Products are warranted to operate or perform substantially in conformance with published Product specifications in effect at the time of sale, as set forth in the Production documentation, specifications and/or accompanying package inserts ("Documentation"). No claim of suitability for use in applications regulated by FDA is made. The warranty provided herein is valid only when used by properly trained individuals. Unless otherwise stated in the Documentation, this warranty is limited to one year from date of shipment when the Product is subjected to normal, proper and intended usage. This warranty does not extend to anyone other than the Buyer. Any model or sample furnished to Buyer is merely illustrative of the general type and quality of goods and does not represent that any Product will conform to such model or sample. NO OTHER WARRANTIES, EXPRESS OR IMPLIED, ARE GRANTED INCLUDING WITHOUT LIMITATION, IMPLIED WARRANTIES OF MERCHANTABILITY, FITNESS FOR ANY PARTICULAR PURPOSE, OR NON INFRINGEMENT. BUYER'S EXCLUSIVE REMEDY FOR NON-CONFORMING PRODUCTS DURING THE WARRANTY PERIOD IS LIMITED TO REPAIR, REPLACEMENT OF OR REFUND FOR THE NON-CONFORMING PRODUCT(S) AT SELLER'S SOLE OPTION. THERE IS NO OBLIGATION TO REPAIR, REPLACE OR REFUND FOR PRODUCTS AS THE RESULT OF (I) ACCIDENT, DISASTER OR EVENT OF FORCE MAJEURE, (II) MISUSE, FAULT OR NEGLIGENCE OF OR BY BUYER, (III) USE OF THE PRODUCTS IN A MANNER FOR WHICH THEY WERE NOT DESIGNED, OR (IV) IMPROPER STORAGE AND HANDLING OF THE PRODUCTS. Unless otherwise expressly stated on the Product or in the documentation accompanying the Product, the Product is intended for research only and is not to be used for any other purpose, including without limitation, unauthorized commercial uses, in vitro diagnostic uses, ex vivo or in vivo therapeutic uses, or any type of consumption by or application to human or animals.