

Cofilin Polyclonal Antibody

| Product Details | |
|--------------------|---|
| Size | 50 µL |
| Species Reactivity | Dog, Human, Mouse, Rat |
| Host/Isotype | Rabbit / IgG |
| Class | Polyclonal |
| Type | Antibody |
| Conjugate | Unconjugated |
| Immunogen | Synthetic peptide, conjugated to maleimide-activated KLH, corresponding to residues 154-166 of human cofilin with an N-terminal added cysteine. |
| Form | Liquid |
| Concentration | 11.4 mg/mL |
| Purification | IgG fraction |
| Storage buffer | 0.01M PBS, pH 7.4 |
| Contains | 15mM sodium azide |
| Storage conditions | Store at 4°C short term. For long term storage, store at -20°C, avoiding freeze/thaw cycles. |
| RRID | AB_779863 |

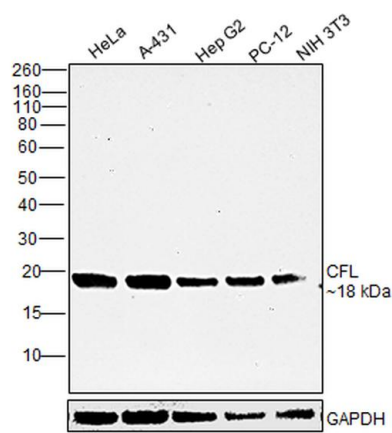
| Applications | Tested Dilution | Publications |
|------------------------------|-----------------|---------------|
| Western Blot (WB) | 1:10,000 | 1 Publication |
| Immunohistochemistry (IHC) | Assay-dependent | - |
| Immunocytochemistry (ICC/IF) | 1:1,000 | - |

Product Specific Information

Recommended positive controls: A431, PC-12, NIH3T3, MDCK.

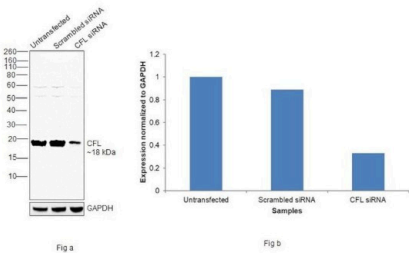
Store product as a concentrated solution. Centrifuge briefly prior to opening the vial.

Product Images For Cofilin Polyclonal Antibody



Cofilin Antibody (PA1-24931) in WB

Western blot was performed using Anti-Cofilin Polyclonal Antibody (Product # PA1-24931) and an 18kDa band corresponding to Cofilin was observed across cell lines tested. Whole cell extracts (30 µg lysate) of HeLa (Lane 1), A-431 (Lane 2), Hep G2 (Lane 3), PC-12 (Lane 4) and NIH/3T3 (Lane 5) were electrophoresed using NuPAGE™ 12% Bis-Tris Protein Gel (Product # NP0341BOX). Resolved proteins were then transferred onto a Nitrocellulose membrane (Product # IB23001) by iBlot® 2 Dry Blotting System (Product # IB21001). The blot was probed with the primary antibody (1:10000 dilution) and detected by chemiluminescence with Goat anti-Rabbit IgG (Heavy Chain) Superclonal™ Recombinant Secondary Antibody, HRP (Product # A27036, 1:4000 dilution) using the iBright FL 1000 (Product # A32752). Chemiluminescent detection was performed using Novex® ECL Chemiluminescent Substrate Reagent Kit (Product # WP20005).

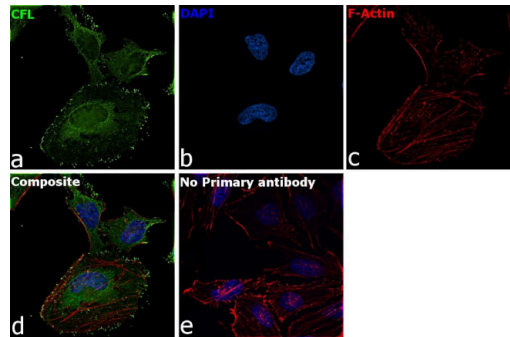


Cofilin Antibody (PA1-24931)

Antibody specificity was demonstrated by siRNA mediated knockdown of target protein. HeLa cells were transfected with Cofilin siRNA and decrease in signal intensity was observed in Western Blot application using Anti-Cofilin Polyclonal Antibody (Product # PA1-24931). {KD}

Cofilin Antibody (PA1-24931) in ICC/IF

Immunofluorescence analysis of Cofilin was performed using 70% confluent log phase HeLa cells. The cells were fixed with 4% paraformaldehyde for 10 minutes, permeabilized with 0.1% Triton™ X-100 for 15 minutes, and blocked with 2% BSA for 45 minutes at room temperature. The cells were labeled with Cofilin Polyclonal Antibody (Product # PA1-24931) at 1:1000 in 0.1% BSA, incubated at 4 degree celsius overnight and then labeled with Goat anti-Rabbit IgG (Heavy Chain) Superclonal™ Recombinant Secondary Antibody, Alexa Fluor® 488 conjugate (Product # A27034), (1:2000), for 45 minutes at room temperature (Panel a: Green). Nuclei (Panel b: Blue) were stained with ProLong™ Diamond Antifade Mountant with DAPI (Product # P36962). F-actin (Panel c: Red) was stained with Rhodamine Phalloidin (Product # R415, 1:300). Panel d represents the merged image showing cytoskeleton, plasma membrane, nucleus and cytoplasm localization. Panel e represents control cells with no primary antibody to assess background. The images were captured at 60X magnification.



View more figures on thermofisher.com

Western Blot (1)

| | |
|--|--------------|
| FASEB bioAdvances | Year 2019 |
| Cyclosporine A inhibits MRTF-SRF signaling through Na⁺/K⁺ ATPase inhibition and actin remodeling. | |
| "Published figure using Cofilin polyclonal antibody (Product # PA1-24931) in Western Blot" | |
| Authors: Burat B,Faucher Q,echová P,Arnion H,Di Meo F,Sauvage FL,Marquet P,Essig M | |

For Research Use Only. Not for use in diagnostic procedures. Not for resale without express authorization. Products are warranted to operate or perform substantially in conformance with published Product specifications in effect at the time of sale, as set forth in the Production documentation, specifications and/or accompanying package inserts ("Documentation"). No claim of suitability for use in applications regulated by FDA is made. The warranty provided herein is valid only when used by properly trained individuals. Unless otherwise stated in the Documentation, this warranty is limited to one year from date of shipment when the Product is subjected to normal, proper and intended usage. This warranty does not extend to anyone other than the Buyer. Any model or sample furnished to Buyer is merely illustrative of the general type and quality of goods and does not represent that any Product will conform to such model or sample. NO OTHER WARRANTIES, EXPRESS OR IMPLIED, ARE GRANTED INCLUDING WITHOUT LIMITATION, IMPLIED WARRANTIES OF MERCHANTABILITY, FITNESS FOR ANY PARTICULAR PURPOSE, OR NON INFRINGEMENT. BUYER'S EXCLUSIVE REMEDY FOR NON-CONFORMING PRODUCTS DURING THE WARRANTY PERIOD IS LIMITED TO REPAIR, REPLACEMENT OF OR REFUND FOR THE NON-CONFORMING PRODUCT(S) AT SELLER'S SOLE OPTION. THERE IS NO OBLIGATION TO REPAIR, REPLACE OR REFUND FOR PRODUCTS AS THE RESULT OF (I) ACCIDENT, DISASTER OR EVENT OF FORCE MAJEURE, (II) MISUSE, FAULT OR NEGLIGENCE OF OR BY BUYER, (III) USE OF THE PRODUCTS IN A MANNER FOR WHICH THEY WERE NOT DESIGNED, OR (IV) IMPROPER STORAGE AND HANDLING OF THE PRODUCTS. Unless otherwise expressly stated on the Product or in the documentation accompanying the Product, the Product is intended for research only and is not to be used for any other purpose, including without limitation, unauthorized commercial uses, in vitro diagnostic uses, ex vivo or in vivo therapeutic uses, or any type of consumption by or application to human or animals.