

CXCL1 Polyclonal Antibody

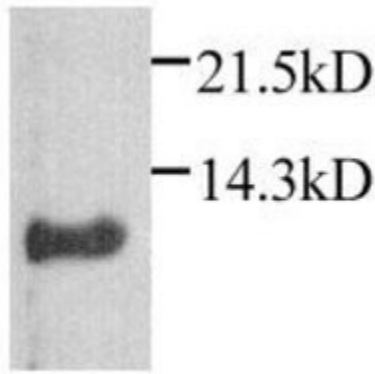
Product Details	
Size	50 µg
Species	Mouse, Rat
Published Species	Mouse
Expression System	Rabbit / IgG
Class	Polyclonal
Type	Antibody
Conjugate	Unconjugated
Immunogen	Recombinant fragment - amino acids 1-72 of rat KC
Form	Liquid
Concentration	1 mg/mL
Purification	Protein A
Storage buffer	PBS, pH 7.2
Contains	0.1% sodium azide
Storage Conditions	Store at 4°C short term. For long term storage, store at -20°C, avoiding freeze/thaw cycles.
RRID	AB_1957060

Applications	Tested Dilution	Publications
Immunoprecipitation (IP)	1:300-1:800	-
Western Blot (WB)	1:2000-1:5000	3 Publications

Product Specific Information

PA1-29220 detects CXCL1 from rat and mouse samples.

Product Images For CXCL1 Polyclonal Antibody



CXCL1 Antibody (PA1-29220) in WB

Western blot analysis of CXCL1 in supernatant of KC-transfected cells. Samples were probed with a CXCL1 polyclonal antibody (Product # PA1-29220).

[View more figures on thermofisher.com](#)

3 References

Western Blot (3)

International journal of molecular medicine

Fisetin inhibits pristine-induced systemic lupus erythematosus in a murine model through CXCLs regulation.

"Published figure using CXCL1 polyclonal antibody (Product # PA1-29220) in Western Blot"

Authors: Xu SP,Li YS

Species

Not Applicable

Dilution

Not Cited

Year

2018

Journal of immunology (Baltimore, Md. : 1950)

Nlrp12 Mediates Adverse Neutrophil Recruitment during Influenza Virus Infection.

"PA1-29220 was used in Western Blotting to determine the role of Nlrp12 in modulating neutrophilic responses during lethal influenza A virus infection."

Authors: Hornick EE,Banoth B,Miller AM,Zacharias ZR,Jain N,Wilson ME,Gibson-Corley KN,Legge KL,Bishop GA,Sutterwala FS,Cassel SL

Species

Mouse

Dilution

Not Cited

Year

2018

[View more WB references on thermofisher.com](#)

For Research Use Only. Not for use in diagnostic procedures. Not for resale without express authorization. Products are warranted to operate or perform substantially in conformance with published Product specifications in effect at the time of sale, as set forth in the Production documentation, specifications and/or accompanying package inserts ("Documentation"). No claim of suitability for use in applications regulated by FDA is made. The warranty provided herein is valid only when used by properly trained individuals. Unless otherwise stated in the Documentation, this warranty is limited to one year from date of shipment when the Product is subjected to normal, proper and intended usage. This warranty does not extend to anyone other than the Buyer. Any model or sample furnished to Buyer is merely illustrative of the general type and quality of goods and does not represent that any Product will conform to such model or sample. NO OTHER WARRANTIES, EXPRESS OR IMPLIED, ARE GRANTED INCLUDING WITHOUT LIMITATION, IMPLIED WARRANTIES OF MERCHANTABILITY, FITNESS FOR ANY PARTICULAR PURPOSE, OR NON INFRINGEMENT. BUYER'S EXCLUSIVE REMEDY FOR NON-CONFORMING PRODUCTS DURING THE WARRANTY PERIOD IS LIMITED TO REPAIR, REPLACEMENT OF OR REFUND FOR THE NON-CONFORMING PRODUCT(S) AT SELLER'S SOLE OPTION. THERE IS NO OBLIGATION TO REPAIR, REPLACE OR REFUND FOR PRODUCTS AS THE RESULT OF (I) ACCIDENT, DISASTER OR EVENT OF FORCE MAJEURE, (II) MISUSE, FAULT OR NEGLIGENCE OF OR BY BUYER, (III) USE OF THE PRODUCTS IN A MANNER FOR WHICH THEY WERE NOT DESIGNED, OR (IV) IMPROPER STORAGE AND HANDLING OF THE PRODUCTS. Unless otherwise expressly stated on the Product or in the documentation accompanying the Product, the Product is intended for research only and is not to be used for any other purpose, including without limitation, unauthorized commercial uses, in vitro diagnostic uses, ex vivo or in vivo therapeutic uses, or any type of consumption by or application to human or animals.