

LHX3 Polyclonal Antibody

Product Details	
Size	50 µg
Species Reactivity	Amphibian, Fish, Human, Mouse, Rat
Host/Isotype	Rabbit / IgG
Class	Polyclonal
Type	Antibody
Conjugate	Unconjugated
Immunogen	C-terminal portion of mouse LHX3 protein.
Form	Liquid
Concentration	1 mg/mL
Purification	IgG fraction
Storage buffer	PBS, pH 7.6
Contains	0.09% sodium azide
Storage conditions	Store at 4°C short term. For long term storage, store at -20°C, avoiding freeze/thaw cycles.
RRID	AB_2135675

Applications	Tested Dilution	Publications
Western Blot (WB)	1:2500-1:5,000	-
Immunohistochemistry (Paraffin) (IHC (P))	1:250-1:1,000	-
Immunohistochemistry (Frozen) (IHC (F))	1:3,000-1:6,000	-
Immunohistochemistry - Free Floating (IHC (Free))	1:4,000-1:8,000	-
Immunocytochemistry (ICC/IF)	1:200-1:500	-
Immunoprecipitation (IP)	1:200	-

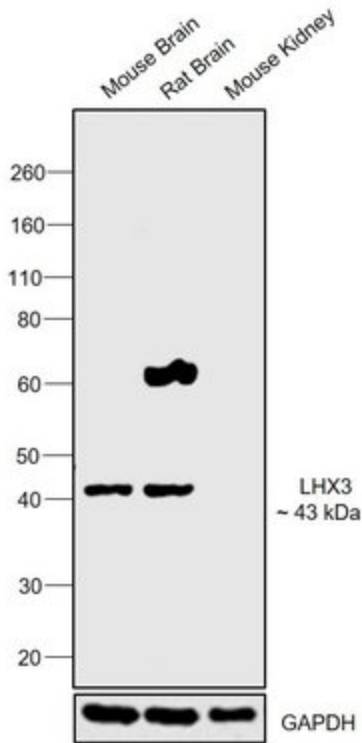
Product Specific Information

Predicted molecular weight of 44 kDa.

Advanced Verification Data

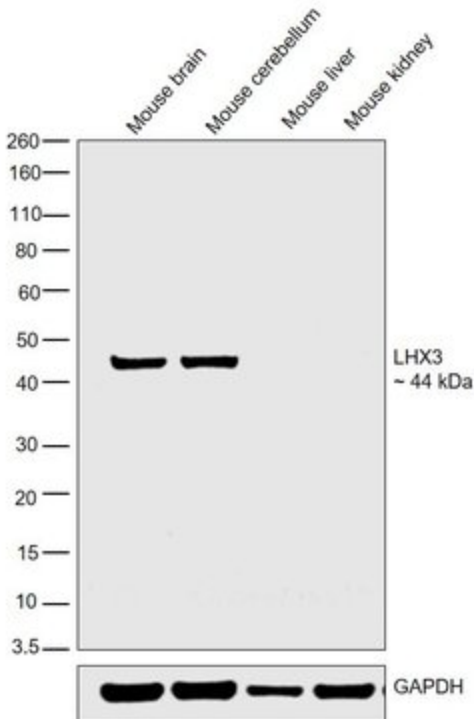
LHX3 Antibody (PA1-29491)

Antibody specificity was demonstrated by detection of differential basal expression of the target across tissues tested owing to their inherent genetic constitution. Relative expression of LHX3 was observed in Mouse Brain in comparison to Mouse Kidney using Anti-LHX3 Polyclonal Antibody (Product # PA1-29491) in Western Blot. Relative expression validation info.

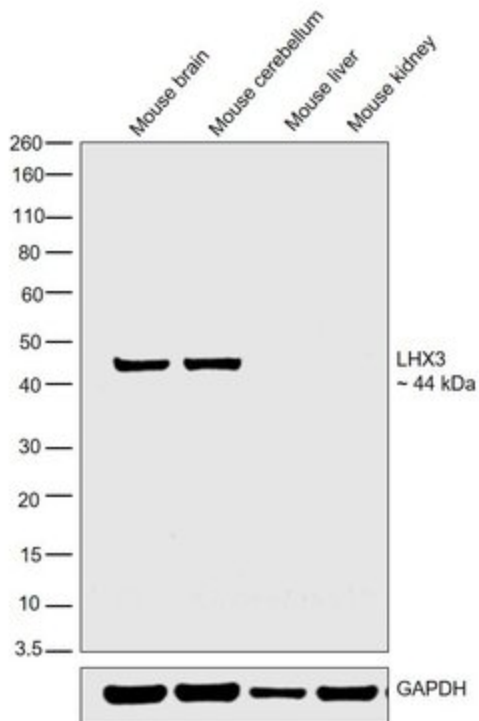


LHX3 Antibody (PA1-29491)

Antibody specificity was demonstrated by detection of differential basal expression of the target across cell models owing to their inherent genetic constitution. Western blot analysis using Anti-LHX3 Rabbit Polyclonal Antibody (Product # PA1-29491) shows increased expression of LHX3 in Mouse Brain and Cerebellum as compared to Mouse Liver and Kidney. Relative expression validation info.



Product Images For LHX3 Polyclonal Antibody

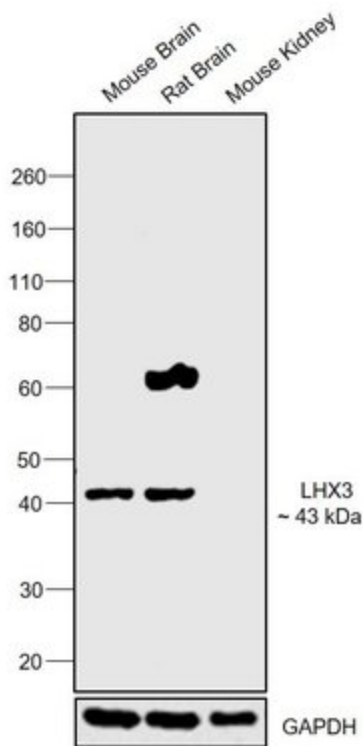


LHX3 Antibody (PA1-29491) in WB

Western blot was performed using Anti-LHX3 Rabbit Polyclonal Antibody (Product # PA1-29491) and a 44 kDa band corresponding to LHX3 was observed in Mouse Brain and Cerebellum tissue lysates but not in other tissues which are reported to be negative. Tissue extracts (30 µg lysate) of Mouse brain (Lane 1), Mouse cerebellum (Lane 2), Mouse liver (Lane 3) and Mouse kidney (Lane 4) were electrophoresed using Novex® NuPAGE® 12 % Bis-Tris gel (Product # NP0342BOX). Resolved proteins were then transferred onto a nitrocellulose membrane (Product #) by iBlot® 2 Dry Blotting System (Product # IB21001). The blot was probed with the primary antibody (1 µg/mL) and detected by chemiluminescence with Goat anti-Rabbit IgG (H+L) Superclonal™ Recombinant Secondary Antibody, HRP (Product # A27036, 1:4000 dilution) using the iBright FL 1000 (Product # A32752). Chemiluminescent detection was performed using Novex® ECL Chemiluminescent Substrate Reagent Kit (Product # WP20005).

LHX3 Antibody (PA1-29491) in WB

Western blot was performed using Anti-LHX3 Polyclonal Antibody (Product # PA1-29491) and a 43 kDa band corresponding to LHX3 was observed across tissues tested except Mouse Kidney which is reported to be negative. Tissue extracts (30 µg lysate) of Mouse Brain (Lane 1), Rat Brain (Lane 2) and Mouse Kidney (Lane 3) were electrophoresed using NuPAGE™ 4-12% Bis-Tris Protein Gel (Product # NP0322BOX). Resolved proteins were then transferred onto a nitrocellulose membrane (Product # IB23001) by iBlot® 2 Dry Blotting System (Product # IB21001). The blot was probed with the primary antibody (1:2500 dilution) and detected by chemiluminescence with Goat anti-Rabbit IgG (H+L) Superclonal™ Recombinant Secondary Antibody, HRP (Product # A27036, 1:4000 dilution) using the iBright FL 1000 (Product # A32752). Chemiluminescent detection was performed using SuperSignal™ West Dura Extended Duration Substrate (Product # 34076).



View more figures on thermofisher.com

For Research Use Only. Not for use in diagnostic procedures. Not for resale without express authorization. Products are warranted to operate or perform substantially in conformance with published Product specifications in effect at the time of sale, as set forth in the Production documentation, specifications and/or accompanying package inserts ("Documentation"). No claim of suitability for use in applications regulated by FDA is made. The warranty provided herein is valid only when used by properly trained individuals. Unless otherwise stated in the Documentation, this warranty is limited to one year from date of shipment when the Product is subjected to normal, proper and intended usage. This warranty does not extend to anyone other than the Buyer. Any model or sample furnished to Buyer is merely illustrative of the general type and quality of goods and does not represent that any Product will conform to such model or sample. NO OTHER WARRANTIES, EXPRESS OR IMPLIED, ARE GRANTED INCLUDING WITHOUT LIMITATION, IMPLIED WARRANTIES OF MERCHANTABILITY, FITNESS FOR ANY PARTICULAR PURPOSE, OR NON INFRINGEMENT. BUYER'S EXCLUSIVE REMEDY FOR NON-CONFORMING PRODUCTS DURING THE WARRANTY PERIOD IS LIMITED TO REPAIR, REPLACEMENT OF OR REFUND FOR THE NON-CONFORMING PRODUCT(S) AT SELLER'S SOLE OPTION. THERE IS NO OBLIGATION TO REPAIR, REPLACE OR REFUND FOR PRODUCTS AS THE RESULT OF (I) ACCIDENT, DISASTER OR EVENT OF FORCE MAJEURE, (II) MISUSE, FAULT OR NEGLIGENCE OF OR BY BUYER, (III) USE OF THE PRODUCTS IN A MANNER FOR WHICH THEY WERE NOT DESIGNED, OR (IV) IMPROPER STORAGE AND HANDLING OF THE PRODUCTS. Unless otherwise expressly stated on the Product or in the documentation accompanying the Product, the Product is intended for research only and is not to be used for any other purpose, including without limitation, unauthorized commercial uses, in vitro diagnostic uses, ex vivo or in vivo therapeutic uses, or any type of consumption by or application to human or animals.