

Cytochrome P450 Reductase Polyclonal Antibody

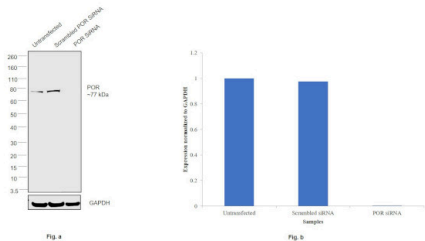
Product Details	
Size	50 µL
Species Reactivity	Dog, Guinea pig, Hamster, Human, Mouse, Non-human primate, Sheep, Pig, Rabbit, Rat
Host/Isotype	Rabbit / IgG
Class	Polyclonal
Type	Antibody
Conjugate	Unconjugated
Immunogen	Purified rat liver NADPH-Cytochrome P450 reductase.
Form	Liquid
Concentration	1 mg/mL
Purification	Protein A
Storage buffer	PBS with 50% glycerol
Contains	0.09% sodium azide
Storage conditions	Store at 4°C short term. For long term storage, store at -20°C, avoiding freeze/thaw cycles.
RRID	AB_2252579

Applications	Tested Dilution	Publications
Western Blot (WB)	0.5 µg/mL	-

Product Specific Information

Suggested positive controls for this product are rat liver, NADPH, cytochrome, P450 and reductase protein.

Product Images For Cytochrome P450 Reductase Polyclonal Antibody

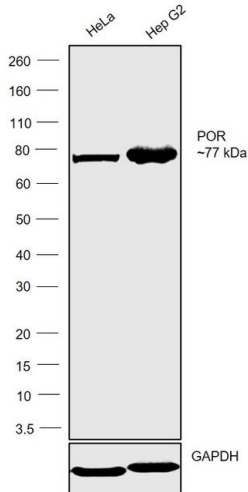


Cytochrome P450 Reductase Antibody (PA1-29792)

Antibody specificity was demonstrated by siRNA mediated knockdown of target protein. HeLa cells were transfected with NADPH-cytochrome P450 reductase siRNA and decrease in signal intensity was observed in Western Blot application using Anti-Cytochrome P450 Reductase Polyclonal Antibody (Product # PA1-29792). {KD}

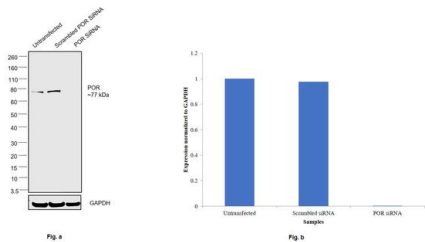
Cytochrome P450 Reductase Antibody (PA1-29792) in WB

Western Blot was performed using Anti-Cytochrome P450 Reductase Polyclonal Antibody (Product # PA1-29792) and a 77 kDa band corresponding to NADPH--cytochrome P450 reductase was observed across the cell lines teste. Whole cell extracts (30 µg lysate) of HeLa (Lane 1) and Hep G2 (Lane 2) were electrophoresed using NuPAGE™ 4-12% Bis-Tris Protein Gel (Product # NP0321BOX). Resolved proteins were then transferred onto a Nitrocellulose membrane (Product # LC2002) by iBlot® 2 Dry Blotting System (Product # IB21001). The Blot was probed with the primary antibody (at a concentration of 0.5 µg/mL) and detected by chemiluminescence with Goat anti-Rabbit IgG (Heavy Chain) Superclonal™ Recombinant Secondary Antibody, HRP (Product # A27036, 1:4000 dilution) using the iBright FL 1000 (Product # A32752). Chemiluminescent detection was performed using Novex® ECL Chemiluminescent Substrate Reagent Kit (Product # WP20005).



Cytochrome P450 Reductase Antibody (PA1-29792) in WB

Knockdown of NADPH--cytochrome P450 reductase was achieved by transfecting HeLa with NADPH--cytochrome P450 reductase specific siRNAs (Silencer® select Product # S10839, S10838). Western Blot analysis (Fig. a) was performed using Whole cell extracts from the NADPH--cytochrome P450 reductase knockdown cells (lane 3), non-targeting scrambled siRNA transfected cells (lane 2) and untransfected cells (lane 1). The Blot was probed with Cytochrome P450 Reductase Polyclonal Antibody (Product # PA1-29792 at a concentration of 0.5 µg/mL) and Goat anti-Rabbit IgG (Heavy Chain) Superclonal™ Recombinant Secondary Antibody, HRP (Product # A27036, 1: 4000 dilution). Densitometric analysis of this western Blot is shown in histogram (Fig. b). Decrease in signal upon siRNA mediated knock down confirms that antibody is specific to NADPH--cytochrome P450 reductase.



For Research Use Only. Not for use in diagnostic procedures. Not for resale without express authorization. Products are warranted to operate or perform substantially in conformance with published Product specifications in effect at the time of sale, as set forth in the Production documentation, specifications and/or accompanying package inserts ("Documentation"). No claim of suitability for use in applications regulated by FDA is made. The warranty provided herein is valid only when used by properly trained individuals. Unless otherwise stated in the Documentation, this warranty is limited to one year from date of shipment when the Product is subjected to normal, proper and intended usage. This warranty does not extend to anyone other than the Buyer. Any model or sample furnished to Buyer is merely illustrative of the general type and quality of goods and does not represent that any Product will conform to such model or sample. NO OTHER WARRANTIES, EXPRESS OR IMPLIED, ARE GRANTED INCLUDING WITHOUT LIMITATION, IMPLIED WARRANTIES OF MERCHANTABILITY, FITNESS FOR ANY PARTICULAR PURPOSE, OR NON INFRINGEMENT. BUYER'S EXCLUSIVE REMEDY FOR NON-CONFORMING PRODUCTS DURING THE WARRANTY PERIOD IS LIMITED TO REPAIR, REPLACEMENT OF OR REFUND FOR THE NON-CONFORMING PRODUCT(S) AT SELLER'S SOLE OPTION. THERE IS NO OBLIGATION TO REPAIR, REPLACE OR REFUND FOR PRODUCTS AS THE RESULT OF (I) ACCIDENT, DISASTER OR EVENT OF FORCE MAJEURE, (II) MISUSE, FAULT OR NEGLIGENCE OF OR BY BUYER, (III) USE OF THE PRODUCTS IN A MANNER FOR WHICH THEY WERE NOT DESIGNED, OR (IV) IMPROPER STORAGE AND HANDLING OF THE PRODUCTS. Unless otherwise expressly stated on the Product or in the documentation accompanying the Product, the Product is intended for research only and is not to be used for any other purpose, including without limitation, unauthorized commercial uses, in vitro diagnostic uses, ex vivo or in vivo therapeutic uses, or any type of consumption by or application to human or animals.