

# LXR alpha Polyclonal Antibody

Product Details	
Size	200 µg
Species Reactivity	Human
Published Species	Rat, Mouse, Human
Host/Isotype	Rabbit / IgG
Class	Polyclonal
Type	Antibody
Conjugate	Unconjugated
Immunogen	Synthetic peptide corresponding to residues C D(318) F S Y N R E D F A K A(329) of human LXR alpha.
Form	Liquid
Concentration	1 mg/mL
Purification	Antigen affinity chromatography
Storage buffer	PBS with 1mg/mL BSA
Contains	0.05% sodium azide
Storage conditions	-20° C, Avoid Freeze/Thaw Cycles
RRID	AB_325600

Applications	Tested Dilution	Publications
Western Blot (WB)	1-3 µg/mL	3 Publications
Immunohistochemistry (IHC)	-	1 Publication
Immunohistochemistry (PFA fixed) (IHC (PFA))	-	1 Publication
Immunocytochemistry (ICC/IF)	1:50-1:500	1 Publication
Gel Shift (GS)	-	1 Publication

## Product Specific Information

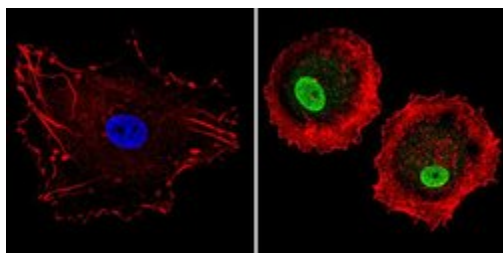
PA1-330 detects recombinant human liver X receptor (LXR) alpha. This antibody does not detect human recombinant LXR beta protein.

PA1-330 has been successfully used in ICC/IF and Western blot procedures. By Western blot, this antibody detects an ~64 kDa protein representing recombinant human LXR alpha.

The PA1-330 immunogen is a synthetic peptide corresponding to residues C D(318) F S Y N R E D F A K A(329) of human LXR alpha. The PA1-330 immunizing peptide (Cat. # PEP-114) is available for use in neutralization and control experiments.

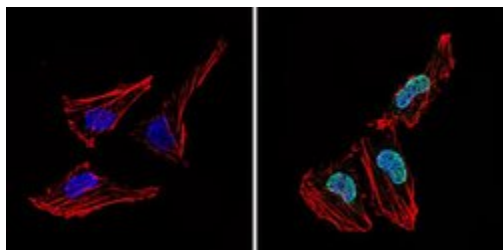
## Product Images For LXR alpha Polyclonal Antibody

### LXR alpha Antibody (PA1-330) in ICC/IF



Immunofluorescent analysis of LXR alpha (green) showing staining in the nucleus of MCF-7 cells (right) compared to a negative control without primary antibody (left). Formalin-fixed cells were permeabilized with 0.1% Triton X-100 in TBS for 5-10 minutes and blocked with 3% BSA-PBS for 30 minutes at room temperature. Cells were probed with a LXR alpha polyclonal antibody (Product # PA1-330) in 3% BSA-PBS at a dilution of 1:300 and incubated overnight at 4°C in a humidified chamber. Cells were washed with PBST and incubated with a DyLight-conjugated secondary antibody in PBS at room temperature in the dark. F-actin (red) was stained with a fluorescent red phalloidin and nuclei (blue) were stained with Hoechst or DAPI. Images were taken at a magnification of 60x.

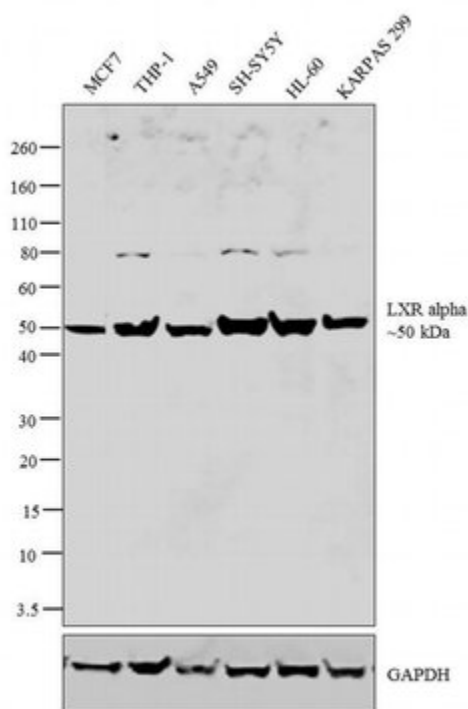
### LXR alpha Antibody (PA1-330) in ICC/IF



Immunofluorescent analysis of LXR alpha (green) showing staining in the nucleus of HeLa cells (right) compared to a negative control without primary antibody (left). Formalin-fixed cells were permeabilized with 0.1% Triton X-100 in TBS for 5-10 minutes and blocked with 3% BSA-PBS for 30 minutes at room temperature. Cells were probed with a LXR alpha polyclonal antibody (Product # PA1-330) in 3% BSA-PBS at a dilution of 1:300 and incubated overnight at 4°C in a humidified chamber. Cells were washed with PBST and incubated with a DyLight-conjugated secondary antibody in PBS at room temperature in the dark. F-actin (red) was stained with a fluorescent red phalloidin and nuclei (blue) were stained with Hoechst or DAPI. Images were taken at a magnification of 60x.

### LXR alpha Antibody (PA1-330) in WB

Western blot analysis was performed on nuclear enriched extracts (30 µg lysate) of MCF7 (Lane 1), THP-1 (Lane 2), A549 (Lane 3), SH-SY5Y (Lane 4), HL-60 (Lane 5) and KARPAS 299 (Lane 6). The blot was probed with Rabbit Anti-LXR alpha Polyclonal Antibody (Product # PA1-330, 2 µg/mL) and detected by chemiluminescence using Goat anti-Rabbit IgG (H+L) Superclonal™ Secondary Antibody, HRP conjugate (Product # A27036, 0.25 µg/mL, 1:4000 dilution). A 50 kDa band corresponding to LXR alpha was observed across the cell lines tested. Known quantity of protein samples were electrophoresed using Novex® NuPAGE® 4-12 % Bis-Tris gel (Product # NP0321BOX), XCell SureLock™ Electrophoresis System (Product # EI0002) and Novex® Sharp Pre-Stained Protein Standard (Product # LC5800). Resolved proteins were then transferred onto a nitrocellulose membrane with iBlot® 2 Dry Blotting System (Product # IB21001). The membrane was probed with the relevant primary and secondary Antibody following blocking with 5 % skimmed milk. Chemiluminescent detection was performed using Pierce™ ECL Western Blotting Substrate (Product # 32106).



View more figures on [thermofisher.com](https://www.thermofisher.com)

## Western Blot (3)

**Molecular therapy : the journal of the American Society of Gene Therapy**

### Macrophage miR-34a Is a Key Regulator of Cholesterol Efflux and Atherosclerosis.

"PA1-330 was used in Western Blotting to investigate the mechanism of microRNA-34a (miR-34a) that regulating macrophage cholesterol efflux and reverse cholesterol transport."

Authors: Xu Y,Xu Y,Zhu Y,Sun H,Juguilon C,Li F,Fan D,Yin L,Zhang Y

**Species**  
Human

**Dilution**  
Not Cited

**Year**  
2020

**Biochimie**

### 27-hydroxycholesterol decreases cell proliferation in colon cancer cell lines.

"PA1-330 was used in Western Blotting to show for the first time that the cholesterol metabolite 27-OHC reduces cell proliferation in colorectal cancer cells."

Authors: Warns J,Marwarha G,Freking N,Ghribi O

**Species**  
Human

**Dilution**  
Not Cited

**Year**  
2018

[View more WB references on thermofisher.com](#)

## Immunohistochemistry (1)

**Arthritis and rheumatism**

### Liver X receptor is a therapeutic target in collagen-induced arthritis.

"PA1-330 was used in immunohistochemistry to demonstrate that liver X receptor inhibits the progression of arthritis symptoms in collagen-induced arthritis"

Authors: Chintalacharuvu SR,Sandusky GE,Burris TP,Burmer GC,Nagpal S

**Species**  
Mouse

**Dilution**  
Not Cited

**Year**  
2007

## Immunohistochemistry (PFA fixed) (1)

**Cardiovascular research**

### Sectm1a deficiency aggravates inflammation-triggered cardiac dysfunction through disruption of LXR signalling in macrophages.

"PA1-330 was used in Immunohistochemistry (PFA fixed) to define Sectm1a as a new regulator of inflammatory-induced cardiac dysfunction through modulation of LXR signalling in macrophages."

Authors: Li Y,Deng S,Wang X,Huang W,Chen J,Robbins N,Mu X,Essandoh K,Peng T,Jegga AG,Rubinstein J,Adams DE,Wang Y,Peng J,Fan GC

**Species**  
Rat

**Dilution**  
Not Cited

**Year**  
2021

## More applications with references on thermofisher.com

ICC/IF (1)

GS (1)

For Research Use Only. Not for use in diagnostic procedures. Not for resale without express authorization. Products are warranted to operate or perform substantially in conformance with published Product specifications in effect at the time of sale, as set forth in the Production documentation, specifications and/or accompanying package inserts ("Documentation"). No claim of suitability for use in applications regulated by FDA is made. The warranty provided herein is valid only when used by properly trained individuals. Unless otherwise stated in the Documentation, this warranty is limited to one year from date of shipment when the Product is subjected to normal, proper and intended usage. This warranty does not extend to anyone other than the Buyer. Any model or sample furnished to Buyer is merely illustrative of the general type and quality of goods and does not represent that any Product will conform to such model or sample. NO OTHER WARRANTIES, EXPRESS OR IMPLIED, ARE GRANTED INCLUDING WITHOUT LIMITATION, IMPLIED WARRANTIES OF MERCHANTABILITY, FITNESS FOR ANY PARTICULAR PURPOSE, OR NON INFRINGEMENT. BUYER'S EXCLUSIVE REMEDY FOR NON-CONFORMING PRODUCTS DURING THE WARRANTY PERIOD IS LIMITED TO REPAIR, REPLACEMENT OF OR REFUND FOR THE NON-CONFORMING PRODUCT(S) AT SELLER'S SOLE OPTION. THERE IS NO OBLIGATION TO REPAIR, REPLACE OR REFUND FOR PRODUCTS AS THE RESULT OF (I) ACCIDENT, DISASTER OR EVENT OF FORCE MAJEURE, (II) MISUSE, FAULT OR NEGLIGENCE OF OR BY BUYER, (III) USE OF THE PRODUCTS IN A MANNER FOR WHICH THEY WERE NOT DESIGNED, OR (IV) IMPROPER STORAGE AND HANDLING OF THE PRODUCTS. Unless otherwise expressly stated on the Product or in the documentation accompanying the Product, the Product is intended for research only and is not to be used for any other purpose, including without limitation, unauthorized commercial uses, in vitro diagnostic uses, ex vivo or in vivo therapeutic uses, or any type of consumption by or application to human or animals.