

# TLR2 Polyclonal Antibody

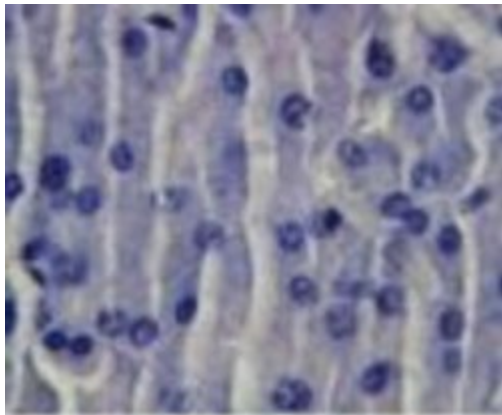
Product Details	
Size	100 µg
Species	Human, Mouse
Published Species	Mouse
Expression System	Rabbit / IgG
Class	Polyclonal
Type	Antibody
Conjugate	Unconjugated
Immunogen	Synthetic peptides corresponding to residues 180-196, 353-370, and 473-489 of human TLR2.
Form	Liquid
Concentration	1 mg/mL
Purification	Protein G
Storage buffer	PBS
Contains	0.05% sodium azide
Storage Conditions	Store at 4°C short term. For long term storage, store at -20°C, avoiding freeze/thaw cycles.
RRID	AB_1087895

Applications	Tested Dilution	Publications
Immunohistochemistry (Paraffin) (IHC (P))	5 µg/mL	-
Western Blot (WB)	1-3 µg/mL	-
Immunohistochemistry (IHC)	-	1 Publication

## Product Specific Information

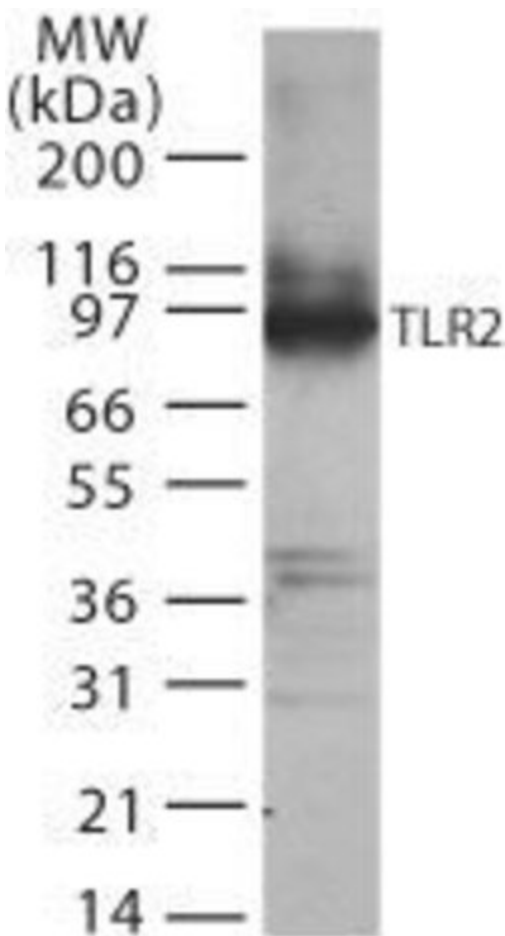
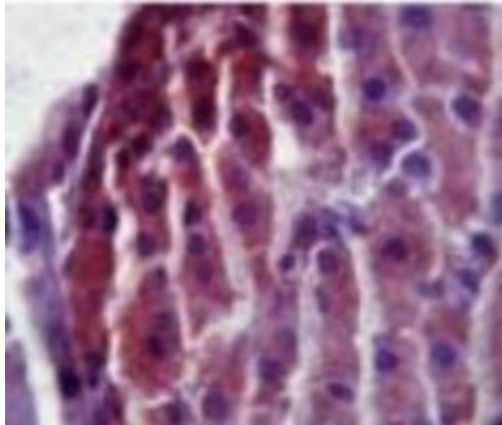
Suggested positive control: bronchial epithelial cells (UBH16E), THP-1, or transfected human TLR2 cell lysate, antigen standard for TLR2 (transient overexpression lysate).

## Product Images For TLR2 Polyclonal Antibody



#### TLR2 Antibody (PA1-41045) in IHC (P)

Immunohistochemical analysis of CD282/TLR2/Toll-like Receptor 2 in paraffin-embedded formalin-fixed mouse pancreas tissue using an isotype control (top) and a CD282/TLR2/Toll-like Receptor 2 polyclonal antibody (Product # PA1-41045) (bottom) at 5 µg/mL.



#### TLR2 Antibody (PA1-41045) in WB

Western blot analysis of TLR2 in transfected cell lysate using a CD282/TLR2/Toll-like Receptor 2 polyclonal antibody (Product # PA1-41045) at 2 µg/mL.

## 1 Reference

### Immunohistochemistry (1)

Journal of molecular medicine (Berlin, Germany)

#### Amantadine attenuates sepsis-induced cognitive dysfunction possibly not through inhibiting toll-like receptor 2.

"PA1-41045 was used in Immunohistochemistry-immunofluorescence to demonstrate that inhibition of TLR2 may not be a major mechanism for amantadine to inhibit sepsis-induced neuroinflammation and cognitive dysfunction."

Authors: Xing W,Huang P,Lu Y,Zeng W,Zuo Z

**Species**  
Mouse

**Dilution**  
1:200

**Year**  
2018

For Research Use Only. Not for use in diagnostic procedures. Not for resale without express authorization. Products are warranted to operate or perform substantially in conformance with published Product specifications in effect at the time of sale, as set forth in the Production documentation, specifications and/or accompanying package inserts ("Documentation"). No claim of suitability for use in applications regulated by FDA is made. The warranty provided herein is valid only when used by properly trained individuals. Unless otherwise stated in the Documentation, this warranty is limited to one year from date of shipment when the Product is subjected to normal, proper and intended usage. This warranty does not extend to anyone other than the Buyer. Any model or sample furnished to Buyer is merely illustrative of the general type and quality of goods and does not represent that any Product will conform to such model or sample. NO OTHER WARRANTIES, EXPRESS OR IMPLIED, ARE GRANTED INCLUDING WITHOUT LIMITATION, IMPLIED WARRANTIES OF MERCHANTABILITY, FITNESS FOR ANY PARTICULAR PURPOSE, OR NON INFRINGEMENT. BUYER'S EXCLUSIVE REMEDY FOR NON-CONFORMING PRODUCTS DURING THE WARRANTY PERIOD IS LIMITED TO REPAIR, REPLACEMENT OF OR REFUND FOR THE NON-CONFORMING PRODUCT(S) AT SELLER'S SOLE OPTION. THERE IS NO OBLIGATION TO REPAIR, REPLACE OR REFUND FOR PRODUCTS AS THE RESULT OF (I) ACCIDENT, DISASTER OR EVENT OF FORCE MAJEURE, (II) MISUSE, FAULT OR NEGLIGENCE OF OR BY BUYER, (III) USE OF THE PRODUCTS IN A MANNER FOR WHICH THEY WERE NOT DESIGNED, OR (IV) IMPROPER STORAGE AND HANDLING OF THE PRODUCTS. Unless otherwise expressly stated on the Product or in the documentation accompanying the Product, the Product is intended for research only and is not to be used for any other purpose, including without limitation, unauthorized commercial uses, in vitro diagnostic uses, ex vivo or in vivo therapeutic uses, or any type of consumption by or application to human or animals.