

SMAD1/SMAD5/SMAD9 Polyclonal Antibody

Product Details	
Size	100 µg
Species Reactivity	Human, Mouse, Rat
Published Species	Chicken
Host/Isotope	Rabbit / IgG
Class	Polyclonal
Type	Antibody
Conjugate	Unconjugated
Immunogen	Synthetic peptides corresponding to residues L(18) G W K Q G D E E E K W A E K(32) and amino acids S(315) N V N R N S T I E N T R R H I(330) of human SMaD1.
Form	Liquid
Concentration	0.5 mg/mL
Purification	Protein G
Storage buffer	PBS with 0.05% BSA
Contains	0.05% sodium azide
Storage Conditions	Store at 4°C short term. For long term storage, store at -20°C, avoiding freeze/thaw cycles.
RRID	AB_2302257

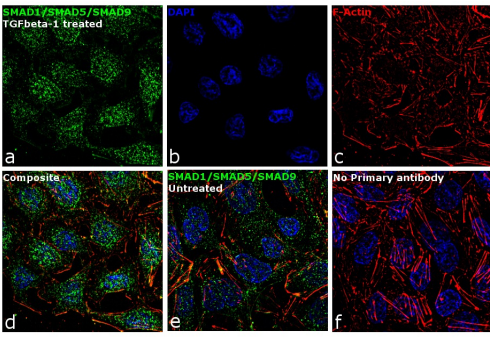
Applications	Tested	Dilution	Published
Western Blot (WB)	✓	1-3 µg/mL	2 Publications
Immunocytochemistry (ICC)	✓	1:100	
Immunofluorescence (IF)	✓	1:100	

Product Specific Information

This antibody is predicted to react with chicken, chimpanzee, invertebrates, most mammals, porcine, xenopus and zebrafish samples

SMAD1/SMAD5/SMAD9 Antibody (PA1-41238)

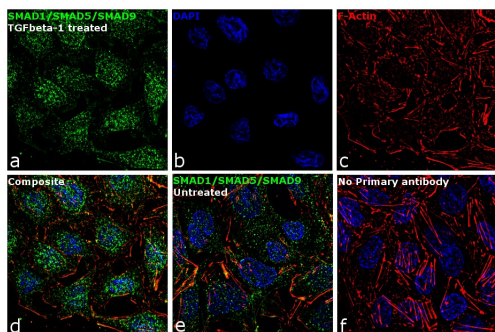
Altered expression of target protein upon cell treatment demonstrates antibody specificity. Immunofluorescence analysis of SMAD1/SMAD5/SMAD9 using Anti-SMAD1/SMAD5/SMAD9 Rabbit polyclonal Antibody (Product # PA1-41238) shows translocation of proteins from cytoplasm to nucleus in HT-29 cell line upon TGFbeta-1 treatment. Cell Treatment validation info.



Product Images For SMAD1/SMAD5/SMAD9 Polyclonal Antibody

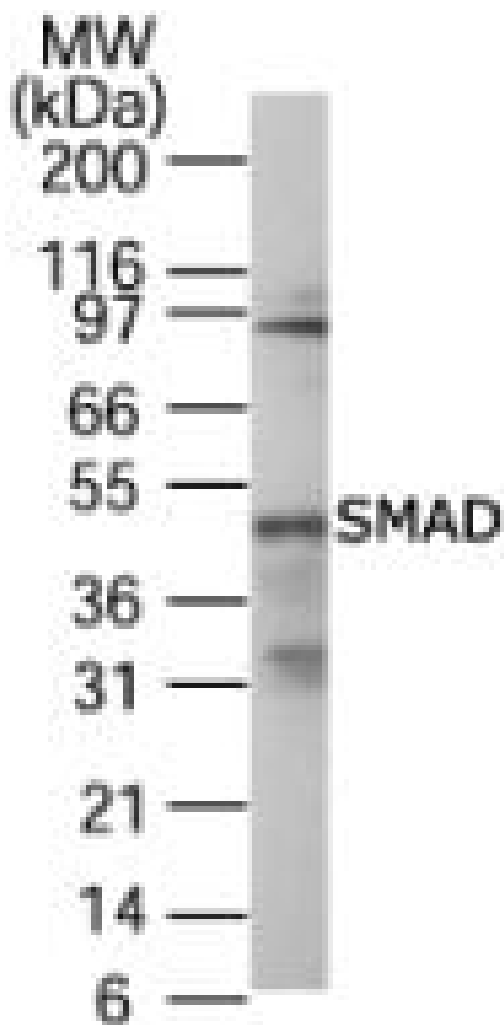
SMAD1/SMAD5/SMAD9 Antibody (PA1-41238) in IF

Immunofluorescence analysis of SMAD1/SMAD5/SMAD9 was performed using 70% confluent log phase HT-29 cells treated with 5ng of TGFbeta-1 for 48 hours. The cells were fixed with 4% paraformaldehyde for 10 minutes, permeabilized with 0.1% Triton™ X-100 for 15 minutes, and blocked with 1% BSA for 1 hour at room temperature. The cells were labeled with SMAD1/SMAD5/SMAD9 Rabbit Polyclonal Antibody (Product # PA1-41238) at 1:100 dilution in 0.1% BSA, incubated at 4 degree Celsius overnight and then labeled with Goat anti-Rabbit IgG (H+L) Superclonal™ Secondary Antibody, Alexa Fluor® 488 conjugate (Product # A27034) at a dilution of 1:2000 for 45 minutes at room temperature (Panel a: green). Nuclei (Panel b: blue) were stained with ProLong™ Diamond Antifade Mountant with DAPI (Product # P36962). F-actin (Panel c: red) was stained with Rhodamine Phalloidin (Product # R415, 1:300). Panel d represents the merged image showing nuclear and weak cytoplasmic localization. Panel e shows untreated cells with cytoplasmic signal. Panel f represents control cells with no primary antibody to assess background. The images were captured at 60X magnification.



SMAD1/SMAD5/SMAD9 Antibody (PA1-41238) in WB

Western blot analysis of SMAD on Lysate from A549 cells using a SMAD1, 5, 8, 9 polyclonal antibody (Product # PA1-41238) at 2 µg/mL.



View more figures on thermofisher.com

Western Blot (2)

International journal of molecular medicine

Combination treatment of adipose-derived stem cells and adiponectin attenuates pulmonary arterial hypertension in rats by inhibiting pulmonary arterial smooth muscle cell proliferation and regulating the AMPK/BMP/Smad pathway.

"Published figure using SMAD1/SMAD5/SMAD9 polyclonal antibody (Product # PA1-41238) in Western Blot"

Authors: Luo L,Zheng W,Lian G,Chen H,Li L,Xu C,Xie L

Species

Not Applicable

Dilution

Not Cited

Year

2018

Biology of reproduction

Bone morphogenetic protein 4 supports the initial differentiation of hen (*Gallus gallus*) granulosa cells.

"PA1-41238 was used in western blot to study the mechanisms underlying the promotion of initial hen granulosa cell differentiation by BMP-4"

Authors: Kim D,Ocón-Grove O,Johnson AL

Species

Chicken

Dilution

1:6000

Year

2013

For Research Use Only. Not for use in diagnostic procedures. Not for resale without express authorization. Products are warranted to operate or perform substantially in conformance with published Product specifications in effect at the time of sale, as set forth in the Production documentation, specifications and/or accompanying package inserts ("Documentation"). No claim of suitability for use in applications regulated by FDA is made. The warranty provided herein is valid only when used by properly trained individuals. Unless otherwise stated in the Documentation, this warranty is limited to one year from date of shipment when the Product is subjected to normal, proper and intended usage. This warranty does not extend to anyone other than the Buyer. Any model or sample furnished to Buyer is merely illustrative of the general type and quality of goods and does not represent that any Product will conform to such model or sample. NO OTHER WARRANTIES, EXPRESS OR IMPLIED, ARE GRANTED INCLUDING WITHOUT LIMITATION, IMPLIED WARRANTIES OF MERCHANTABILITY, FITNESS FOR ANY PARTICULAR PURPOSE, OR NON INFRINGEMENT. BUYER'S EXCLUSIVE REMEDY FOR NON-CONFORMING PRODUCTS DURING THE WARRANTY PERIOD IS LIMITED TO REPAIR, REPLACEMENT OF OR REFUND FOR THE NON-CONFORMING PRODUCT(S) AT SELLER'S SOLE OPTION. THERE IS NO OBLIGATION TO REPAIR, REPLACE OR REFUND FOR PRODUCTS AS THE RESULT OF (I) ACCIDENT, DISASTER OR EVENT OF FORCE MAJEURE, (II) MISUSE, FAULT OR NEGLIGENCE OF OR BY BUYER, (III) USE OF THE PRODUCTS IN A MANNER FOR WHICH THEY WERE NOT DESIGNED, OR (IV) IMPROPER STORAGE AND HANDLING OF THE PRODUCTS. Unless otherwise expressly stated on the Product or in the documentation accompanying the Product, the Product is intended for research only and is not to be used for any other purpose, including without limitation, unauthorized commercial uses, in vitro diagnostic uses, ex vivo or in vivo therapeutic uses, or any type of consumption by or application to human or animals.