

Phospho-MARCKS (Ser152, Ser156) Polyclonal Antibody

Product Details	
Size	100 µL
Species Reactivity	Rat
Published Species	Mouse
Host/Isotope	Rabbit / IgG
Class	Polyclonal
Type	Antibody
Conjugate	Unconjugated
Immunogen	Synthetic phospho-peptide corresponding to amino acid residues surrounding Ser152/156 of rat MARCKS conjugated to KLH
Form	Liquid
Purification	Affinity chromatography
Storage buffer	0.01M HEPES, pH 7.5, with 0.15M NaCl, 100µg/mL BSA, 50% glycerol
Contains	no preservative
Storage Conditions	-20° C, Avoid Freeze/Thaw Cycles
RRID	AB_2234991

Applications	Tested Dilution	Publications
Western Blot (WB)	1:1000	1 Publication

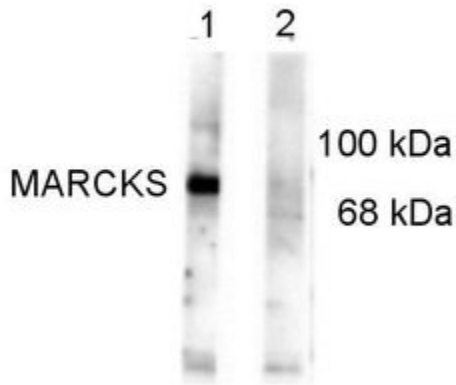
Product Specific Information

This antibody is predicted to react with bovine, chicken, human, mouse, Xenopus and zebrafish based on 100% sequence homology.

This antibody is specific for the ~87 kDa MARCKS protein phosphorylated at Ser152 and Ser156 in Western blots of rat brain homogenates. Immunolabeling is blocked by the phosphopeptide used as the antigen but not by the corresponding dephosphopeptide.

Product Images For Phospho-MARCKS (Ser152, Ser156) Polyclonal Antibody

Fig. 1



Phospho-MARCKS (Ser152, Ser156) Antibody (PA1-4629) in WB

Western blot of 10 µg of rat brain lysate showing specific immunolabeling of the ~87 kDa MARCKS protein phosphorylated at Ser152/156 (Lane 1). Immunolabeling is blocked by the Ser152/156 phosphopeptide used as antigen (Lane 2). The corresponding dephosphopeptide did not block the immunolabeling (not shown).

1 Reference

Western Blot (1)

American journal of physiology. Lung cellular and molecular physiology

ENaC activity and expression is decreased in the lungs of protein kinase C- knockout mice.

"PA1-4629 was used in western blot to study the regulation of alveolar epithelial Na(+) channels using a PKC-alpha knockout model"

Authors: Eaton AF, Yue Q, Eaton DC, Bao HF

Species
Mouse

Dilution
1:1000

Year
2014

For Research Use Only. Not for use in diagnostic procedures. Not for resale without express authorization. Products are warranted to operate or perform substantially in conformance with published Product specifications in effect at the time of sale, as set forth in the Production documentation, specifications and/or accompanying package inserts ("Documentation"). No claim of suitability for use in applications regulated by FDA is made. The warranty provided herein is valid only when used by properly trained individuals. Unless otherwise stated in the Documentation, this warranty is limited to one year from date of shipment when the Product is subjected to normal, proper and intended usage. This warranty does not extend to anyone other than the Buyer. Any model or sample furnished to Buyer is merely illustrative of the general type and quality of goods and does not represent that any Product will conform to such model or sample. NO OTHER WARRANTIES, EXPRESS OR IMPLIED, ARE GRANTED INCLUDING WITHOUT LIMITATION, IMPLIED WARRANTIES OF MERCHANTABILITY, FITNESS FOR ANY PARTICULAR PURPOSE, OR NON-INFRINGEMENT. BUYER'S EXCLUSIVE REMEDY FOR NON-CONFORMING PRODUCTS DURING THE WARRANTY PERIOD IS LIMITED TO REPAIR, REPLACEMENT OF OR REFUND FOR THE NON-CONFORMING PRODUCT(S) AT SELLER'S SOLE OPTION. THERE IS NO OBLIGATION TO REPAIR, REPLACE OR REFUND FOR PRODUCTS AS THE RESULT OF (I) ACCIDENT, DISASTER OR EVENT OF FORCE MAJEURE, (II) MISUSE, FAULT OR NEGLIGENCE OF OR BY BUYER, (III) USE OF THE PRODUCTS IN A MANNER FOR WHICH THEY WERE NOT DESIGNED, OR (IV) IMPROPER STORAGE AND HANDLING OF THE PRODUCTS. Unless otherwise expressly stated on the Product or in the documentation accompanying the Product, the Product is intended for research only and is not to be used for any other purpose, including without limitation, unauthorized commercial uses, in vitro diagnostic uses, ex vivo or in vivo therapeutic uses, or any type of consumption by or application to human or animals.