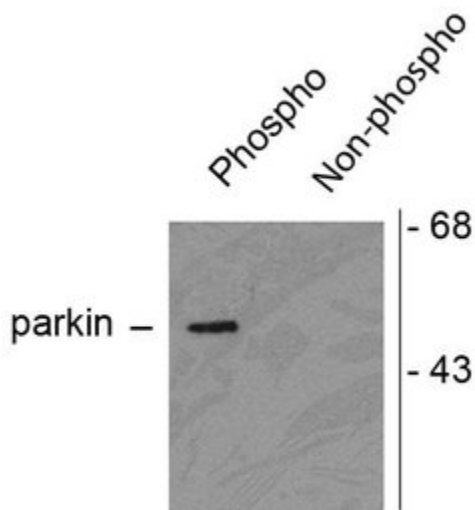


Phospho-Parkin (Ser378) Polyclonal Antibody

Product Details	
Size	100 µL
Species	Human
Published Species	Human
Expression System	Rabbit / IgG
Class	Polyclonal
Type	Antibody
Conjugate	Unconjugated
Immunogen	Synthetic phospho-peptide corresponding to amino acid residues surrounding Ser378 of human PARK2 conjugated to KLH
Form	Liquid
Purification	Affinity chromatography
Storage buffer	0.01M HEPES, pH 7.5, with 0.15M NaCl, 100µg/mL BSA, 50% glycerol
Contains	no preservative
Storage Conditions	-20° C, Avoid Freeze/Thaw Cycles
RRID	AB_1090601

Applications	Tested Dilution	Publications
Western Blot (WB)	1:1000	1 Publication

Product Images For Phospho-Parkin (Ser378) Polyclonal Antibody



Phospho-Parkin (Ser378) Antibody (PA1-4735) in WB

Western blot of Phospho-Parkin pSer101 in HEK293 cells transfected with Parkin WT (Phospho) and Parkin Ser378 mutant (non-phospho) using a polyclonal antibody (Product # PA1-4735). Results show the phospho-specific immunolabeling of the ~ 52k Parkin protein and lack of immunolabeling in the Parkin Ser378 mutant.

Western Blot (1)

Journal of Alzheimer's disease : JAD

Diminished parkin solubility and co-localization with intraneuronal amyloid- are associated with autophagic defects in Alzheimer's disease.

"PA1-4735 was used in western blot to study the decreased solubility of the parkin E3 ubiquitin ligase observed in Alzheimer's disease brain and its role in the autophagic clearance of Abeta(1-42)"

Authors: Lonskaya I,Shekoyan AR,Hebron ML,Desforges N,Algarzae NK,Moussa CE

Species
Human

Dilution
1:1000

Year
2013

For Research Use Only. Not for use in diagnostic procedures. Not for resale without express authorization. Products are warranted to operate or perform substantially in conformance with published Product specifications in effect at the time of sale, as set forth in the Production documentation, specifications and/or accompanying package inserts ("Documentation"). No claim of suitability for use in applications regulated by FDA is made. The warranty provided herein is valid only when used by properly trained individuals. Unless otherwise stated in the Documentation, this warranty is limited to one year from date of shipment when the Product is subjected to normal, proper and intended usage. This warranty does not extend to anyone other than the Buyer. Any model or sample furnished to Buyer is merely illustrative of the general type and quality of goods and does not represent that any Product will conform to such model or sample. NO OTHER WARRANTIES, EXPRESS OR IMPLIED, ARE GRANTED INCLUDING WITHOUT LIMITATION, IMPLIED WARRANTIES OF MERCHANTABILITY, FITNESS FOR ANY PARTICULAR PURPOSE, OR NON INFRINGEMENT. BUYER'S EXCLUSIVE REMEDY FOR NON-CONFORMING PRODUCTS DURING THE WARRANTY PERIOD IS LIMITED TO REPAIR, REPLACEMENT OF OR REFUND FOR THE NON-CONFORMING PRODUCT(S) AT SELLER'S SOLE OPTION. THERE IS NO OBLIGATION TO REPAIR, REPLACE OR REFUND FOR PRODUCTS AS THE RESULT OF (I) ACCIDENT, DISASTER OR EVENT OF FORCE MAJEURE, (II) MISUSE, FAULT OR NEGLIGENCE OF OR BY BUYER, (III) USE OF THE PRODUCTS IN A MANNER FOR WHICH THEY WERE NOT DESIGNED, OR (IV) IMPROPER STORAGE AND HANDLING OF THE PRODUCTS. Unless otherwise expressly stated on the Product or in the documentation accompanying the Product, the Product is intended for research only and is not to be used for any other purpose, including without limitation, unauthorized commercial uses, in vitro diagnostic uses, ex vivo or in vivo therapeutic uses, or any type of consumption by or application to human or animals.