

LexA Polyclonal Antibody

Product Details

Size	50 µL
Species Reactivity	Bacteria, Yeast
Host/Isotype	Rabbit / IgG
Class	Polyclonal
Type	Antibody
Conjugate	Unconjugated
Immunogen	Full size LexA recombinant protein.
Form	Liquid
Concentration	Conc. Not Determined
Storage buffer	whole serum
Contains	0.05% sodium azide
Storage conditions	-20°C
RRID	AB_667485

Applications	Tested Dilution	Publications
Western Blot (WB)	1:1,000-1:3,000	-
Immunohistochemistry (IHC)	Assay-dependent	-
Immunoprecipitation (IP)	Assay-dependent	-
ChIP assay (ChIP)	Assay-dependent	-
Miscellaneous PubMed (Misc)	-	1 Publication

Product Specific Information

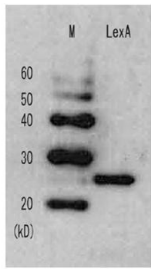
PA1-4966 detects LexA protein in E.coli and yeast samples.

PA1-4966 has been successfully used in Western blot, immunoprecipitation and immunohistochemical procedures. It is specific for the ~23 kDa LexA protein.

PA1-4966 immunogen is a highly purified recombinant full size LexA protein.

Store at -20°C.

Product Images For LexA Polyclonal Antibody



LexA Antibody (PA1-4966) in WB
Western Blot of LexA in E. coli whole-cell lysate using a LexA Polyclonal Antibody (Product # PA1-4966).

1 Reference

Miscellaneous PubMed (1)

Journal of neurochemistry	Year 2008
Photoreceptor-specific expression, light-dependent localization, and transcriptional targets of the zinc-finger protein Yin Yang 1 in the chicken retina.	
"PA1-4966 was used in immunohistochemistry and western blot to investigate zinc-finger protein Yin Yang 1 expression in chicken retina and its importance in retina-specific gene regulation"	
Authors: Bernard M,Voisin P	

For Research Use Only. Not for use in diagnostic procedures. Not for resale without express authorization. Products are warranted to operate or perform substantially in conformance with published Product specifications in effect at the time of sale, as set forth in the Production documentation, specifications and/or accompanying package inserts ("Documentation"). No claim of suitability for use in applications regulated by FDA is made. The warranty provided herein is valid only when used by properly trained individuals. Unless otherwise stated in the Documentation, this warranty is limited to one year from date of shipment when the Product is subjected to normal, proper and intended usage. This warranty does not extend to anyone other than the Buyer. Any model or sample furnished to Buyer is merely illustrative of the general type and quality of goods and does not represent that any Product will conform to such model or sample. NO OTHER WARRANTIES, EXPRESS OR IMPLIED, ARE GRANTED INCLUDING WITHOUT LIMITATION, IMPLIED WARRANTIES OF MERCHANTABILITY, FITNESS FOR ANY PARTICULAR PURPOSE, OR NON-INFRINGEMENT. BUYER'S EXCLUSIVE REMEDY FOR NON-CONFORMING PRODUCTS DURING THE WARRANTY PERIOD IS LIMITED TO REPAIR, REPLACEMENT OF OR REFUND FOR THE NON-CONFORMING PRODUCT(S) AT SELLER'S SOLE OPTION. THERE IS NO OBLIGATION TO REPAIR, REPLACE OR REFUND FOR PRODUCTS AS THE RESULT OF (I) ACCIDENT, DISASTER OR EVENT OF FORCE MAJEURE, (II) MISUSE, FAULT OR NEGLIGENCE OF OR BY BUYER, (III) USE OF THE PRODUCTS IN A MANNER FOR WHICH THEY WERE NOT DESIGNED, OR (IV) IMPROPER STORAGE AND HANDLING OF THE PRODUCTS. Unless otherwise expressly stated on the Product or in the documentation accompanying the Product, the Product is intended for research only and is not to be used for any other purpose, including without limitation, unauthorized commercial uses, in vitro diagnostic uses, ex vivo or in vivo therapeutic uses, or any type of consumption by or application to human or animals.