

# CaMKI Polyclonal Antibody

## Product Details

Size	100 µg
Species Reactivity	Human, Mouse, Rat
Host/Isotype	Rabbit / IgG
Class	Polyclonal
Type	Antibody
Conjugate	Unconjugated
Immunogen	Synthetic Peptide: A(1) V E G P R W K Q A E D I R D I Y D(18)
Form	Liquid
Concentration	1 mg/mL
Purification	Antigen affinity chromatography
Storage buffer	PBS with 1mg/mL BSA
Contains	0.05% sodium azide
Storage conditions	-20° C, Avoid Freeze/Thaw Cycles
RRID	AB_2070105

Applications	Tested Dilution	Publications
Western Blot (WB)	1 µg/mL	-
Immunohistochemistry (Paraffin) (IHC (P))	1:20-1:100	-
Immunocytochemistry (ICC/IF)	2 µg/mL	-

## Product Specific Information

PA1-543 detects calcium/calmodulin-dependent kinase I (CaMKI) from rat and mouse brain extract.

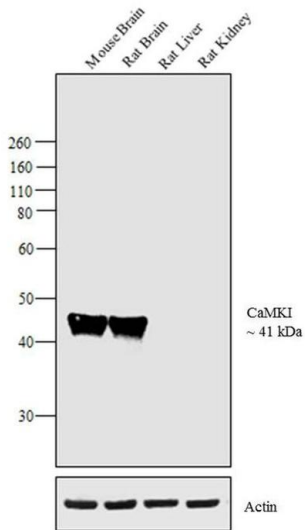
PA1-543 has been successfully used in Western blot procedures. By Western blot, this antibody detects an ~43 kDa protein representing CaMKI from rat and mouse brain extract.

PA1-543 immunizing peptide corresponds to amino acid residues 1-18 from human CaMKI protein. PA1-543 immunizing peptide (Cat. # PEP-134) is available for use in neutralization and control experiments.

## Product Images For CaMKI Polyclonal Antibody

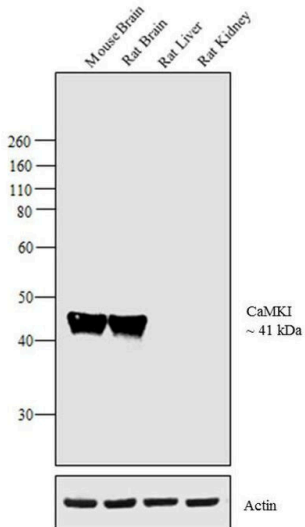
### CaMKI Antibody (PA1-543) in WB

Western blot analysis was performed on tissue extracts (30 µg lysate) of Mouse Brain (Lane 1), Rat Brain (Lane 2), Rat Liver (Lane 3) and Rat Kidney (Lane 4). The blot was probed with Anti- CaMKI Rabbit Polyclonal Antibody (Product # PA1-543, 1 µg/mL) and detected by chemiluminescence using Goat anti-Rabbit IgG (Heavy Chain) Superclonal™ Secondary Antibody, HRP conjugate (Product # A27036, 0.25 µg/mL, 1:4000 dilution). A 41 kDa band corresponding to CaMKI was observed in Mouse Brain, Rat Brain and not observed in other tissues which are documented to be CaMKI negative.



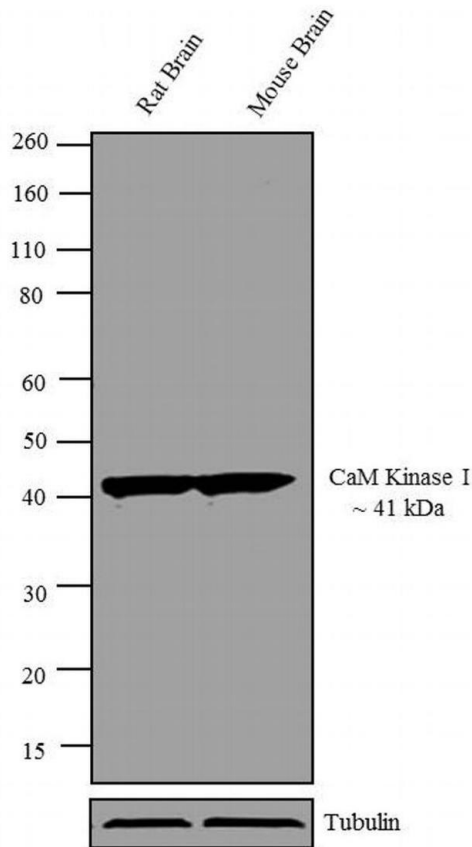
### CaMKI Antibody (PA1-543)

Antibody specificity was demonstrated by detection of differential basal expression of the target across tissue models owing to their inherent genetic constitution. Relative expression of CaMKI was observed in Mouse Brain, Rat Brain, Rat Liver and Rat Kidney in Western Blot using CaMKI Polyclonal Antibody (Product # PA1-543). CaMKI is reported to be expressed in brain tissue and not in other tissues like liver and kidney. {RE}



### CaMKI Antibody (PA1-543) in WB

Western blot analysis was performed on tissue extracts (30 µg lysate) of Rat Brain (Lane 1), and Mouse Brain (Lane 2). The blots were probed with Anti-CaM Kinase I Rabbit Polyclonal Antibody (Product # PA1-543, 1-2 µg/mL) and detected by chemiluminescence using Goat anti-Rabbit IgG (Heavy Chain) Superclonal™ Secondary Antibody, HRP conjugate (Product # A27036, 0.4 µg/mL, 1:2500 dilution). A ~ 41 kDa band corresponding to CaM Kinase I was observed across tissues tested. Known quantity of protein samples were electrophoresed using Novex® NuPAGE® 12 % Bis-Tris gel (Product # NP0342BOX), XCell SureLock™ Electrophoresis System (Product # EI0002) and Novex® Sharp Pre-Stained Protein Standard (Product # LC5800). Resolved proteins were then transferred onto a nitrocellulose membrane with iBlot® 2 Dry Blotting System (Product # IB21001). The membrane was probed with the relevant primary and secondary Antibody following blocking with 5 % skimmed milk. Chemiluminescent detection was performed using Pierce™ ECL Western Blotting Substrate (Product # 32106).



[View more figures on thermofisher.com](https://thermofisher.com)

For Research Use Only. Not for use in diagnostic procedures. Not for resale without express authorization. Products are warranted to operate or perform substantially in conformance with published Product specifications in effect at the time of sale, as set forth in the Production documentation, specifications and/or accompanying package inserts ("Documentation"). No claim of suitability for use in applications regulated by FDA is made. The warranty provided herein is valid only when used by properly trained individuals. Unless otherwise stated in the Documentation, this warranty is limited to one year from date of shipment when the Product is subjected to normal, proper and intended usage. This warranty does not extend to anyone other than the Buyer. Any model or sample furnished to Buyer is merely illustrative of the general type and quality of goods and does not represent that any Product will conform to such model or sample. NO OTHER WARRANTIES, EXPRESS OR IMPLIED, ARE GRANTED INCLUDING WITHOUT LIMITATION, IMPLIED WARRANTIES OF MERCHANTABILITY, FITNESS FOR ANY PARTICULAR PURPOSE, OR NON-INFRINGEMENT. BUYER'S EXCLUSIVE REMEDY FOR NON-CONFORMING PRODUCTS DURING THE WARRANTY PERIOD IS LIMITED TO REPAIR, REPLACEMENT OF OR REFUND FOR THE NON-CONFORMING PRODUCT(S) AT SELLER'S SOLE OPTION. THERE IS NO OBLIGATION TO REPAIR, REPLACE OR REFUND FOR PRODUCTS AS THE RESULT OF (I) ACCIDENT, DISASTER OR EVENT OF FORCE MAJEURE, (II) MISUSE, FAULT OR NEGLIGENCE OF OR BY BUYER, (III) USE OF THE PRODUCTS IN A MANNER FOR WHICH THEY WERE NOT DESIGNED, OR (IV) IMPROPER STORAGE AND HANDLING OF THE PRODUCTS. Unless otherwise expressly stated on the Product or in the documentation accompanying the Product, the Product is intended for research only and is not to be used for any other purpose, including without limitation, unauthorized commercial uses, in vitro diagnostic uses, ex vivo or in vivo therapeutic uses, or any type of consumption by or application to human or animals.