

# Cannabinoid Receptor 1 Polyclonal Antibody

Product Details	
Size	100 µL
Species Reactivity	Human, Rat
Published Species	Ferret, Rat, Human, Mouse
Host/Isotype	Rabbit / IgG
Class	Polyclonal
Type	Antibody
Conjugate	Unconjugated
Immunogen	A fusion protein containing the first 99 amino acid residues from human CB1.
Form	Liquid
Concentration	1 mg/mL
Purification	Affinity chromatography
Storage buffer	PBS with 1mg/mL BSA, 50% glycerol
Contains	0.05% sodium azide
Storage conditions	-20° C, Avoid Freeze/Thaw Cycles
RRID	AB_2245118

Applications	Tested Dilution	Publications
Western Blot (WB)	1:250	6 Publications
Immunohistochemistry (IHC)	-	18 Publications
Immunohistochemistry (Paraffin) (IHC (P))	Assay-dependent	-
Immunohistochemistry (Frozen) (IHC (F))	Assay-dependent	-
Immunocytochemistry (ICC/IF)	1:1,000	2 Publications

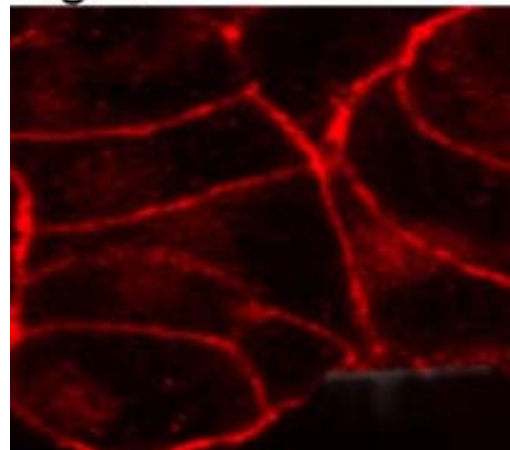
## Product Specific Information

PA1-743 detects cannabinoid receptor 1 (CB1) from human and rat tissues as well as transfected rat CB1.

PA1-743 has been successfully used in Western blot and immunocytochemistry procedures. By Western blot, this antibody detects an ~52 kDa protein representing CB1 from rat brain homogenate. Immunocytochemical staining of CB1 in AtT20 cells transfected with the rat CB1 gene with PA1-743 yields a pattern consistent with plasma membrane staining.

PA1-743 antigen is a fusion protein containing the first 99 amino acid residues of human CB1.

Fig. 1



**Cannabinoid Receptor 1 Antibody (PA1-743) in ICC/IF**  
Immunolocalization of rat CB1 transfected into AtT20 cells using Product # PA1-743.

[View more figures on thermofisher.com](https://www.thermofisher.com)

## Western Blot (6)

<p><b>Molecular and cellular endocrinology</b></p> <p><b>Effect of capacitation on the endocannabinoid system of mouse sperm.</b></p> <p>"PA1-743 was used in western blot to investigate the effect of capacitation on the spermic endocannabinoid system in mice"</p> <p>Authors: Catanzaro G,Battista N,Rossi G,Di Tommaso M,Pucci M,Pirazzi V,Cecconi S,Maccarrone M</p>	<p><b>Year</b> 2011</p> <p><b>Species</b> Mouse</p> <p><b>Dilution</b> 1:400</p>
<p><b>Birth defects research. Part B, Developmental and reproductive toxicology</b></p> <p><b>Effects of chronic bhang (cannabis) administration on the reproductive system of male mice.</b></p> <p>"PA1-743 was used in western blot to investigate the effect of chronic bhang uptake on male reproductive physiology in mice"</p> <p>Authors: Banerjee A,Singh A,Srivastava P,Turner H,Krishna A</p>	<p><b>Year</b> 2011</p> <p><b>Species</b> Mouse</p> <p><b>Dilution</b> 1:250</p>

[View more WB references on thermofisher.com](#)

## Immunohistochemistry (18)

<p><b>Nutrients</b></p> <p><b>Low-Dose Administration of Cannabigerol Attenuates Inflammation and Fibrosis Associated with Methionine/Choline Deficient Diet-Induced NASH Model via Modulation of Cannabinoid Receptor.</b></p> <p>"PA1-743 was used in Immunohistochemistry-immunofluorescence to show that the low dose of CBG alleviated hepatic fibrosis and inflammation in MCD-induced NASH, however, the high dose of CBG treatment showed enhanced liver damage when compared to MCD only group."</p> <p>Authors: Aljobaily N,Krutsinger K,Viereckl MJ,Joly R,Menlove B,Cone B,Suppes A,Han Y</p>	<p><b>Year</b> 2022</p> <p><b>Species</b> Mouse</p> <p><b>Dilution</b> 1:1000</p>
<p><b>Frontiers in reproductive health</b></p> <p><b>Synthetic Cannabinoid Agonist WIN 55212-2 Targets Proliferation, Angiogenesis, and Apoptosis <i>via</i> MAPK/AKT Signaling in Human Endometriotic Cell Lines and a Murine Model of Endometriosis.</b></p> <p>"Published figure using Cannabinoid Receptor 1 polyclonal antibody (Product # PA1-743) in Immunohistochemistry"</p> <p>Authors: Lingegowda H,Miller JE,Marks RM,Symons LK,Alward T,Lomax AE,Koti M,Tayade C</p>	<p><b>Year</b> 2022</p>

[View more IHC references on thermofisher.com](#)

## More applications with references on thermofisher.com

## ICC/IF (2)

For Research Use Only. Not for use in diagnostic procedures. Not for resale without express authorization. Products are warranted to operate or perform substantially in conformance with published Product specifications in effect at the time of sale, as set forth in the Production documentation, specifications and/or accompanying package inserts ("Documentation"). No claim of suitability for use in applications regulated by FDA is made. The warranty provided herein is valid only when used by properly trained individuals. Unless otherwise stated in the Documentation, this warranty is limited to one year from date of shipment when the Product is subjected to normal, proper and intended usage. This warranty does not extend to anyone other than the Buyer. Any model or sample furnished to Buyer is merely illustrative of the general type and quality of goods and does not represent that any Product will conform to such model or sample. NO OTHER WARRANTIES, EXPRESS OR IMPLIED, ARE GRANTED INCLUDING WITHOUT LIMITATION, IMPLIED WARRANTIES OF MERCHANTABILITY, FITNESS FOR ANY PARTICULAR PURPOSE, OR NON-INFRINGEMENT. BUYER'S EXCLUSIVE REMEDY FOR NON-CONFORMING PRODUCTS DURING THE WARRANTY PERIOD IS LIMITED TO REPAIR, REPLACEMENT OF OR REFUND FOR THE NON-CONFORMING PRODUCT(S) AT SELLER'S SOLE OPTION. THERE IS NO OBLIGATION TO REPAIR, REPLACE OR REFUND FOR PRODUCTS AS THE RESULT OF (I) ACCIDENT, DISASTER OR EVENT OF FORCE MAJEURE, (II) MISUSE, FAULT OR NEGLIGENCE OF OR BY BUYER, (III) USE OF THE PRODUCTS IN A MANNER FOR WHICH THEY WERE NOT DESIGNED, OR (IV) IMPROPER STORAGE AND HANDLING OF THE PRODUCTS. Unless otherwise expressly stated on the Product or in the documentation accompanying the Product, the Product is intended for research only and is not to be used for any other purpose, including without limitation, unauthorized commercial uses, in vitro diagnostic uses, ex vivo or in vivo therapeutic uses, or any type of consumption by or application to human or animals.