

RORA Polyclonal Antibody

Product Details	
Size	100 µg
Species Reactivity	Human, Rat
Published Species	Mouse, Human
Host/Isotype	Rabbit / IgG
Class	Polyclonal
Type	Antibody
Conjugate	Unconjugated
Immunogen	Synthetic peptide corresponding to residues K(541) E L F T S E F E P A M Q I D G(556) of human ROR alpha.
Form	Liquid
Concentration	1 mg/mL
Purification	Antigen affinity chromatography
Storage buffer	PBS with 1mg/mL BSA
Contains	0.05% sodium azide
Storage Conditions	-20° C, Avoid Freeze/Thaw Cycles
RRID	AB_2180138

Applications	Tested Dilution	Publications
Western Blot (WB)	1:1000	1 Publication
ChIP assay (ChIP)	-	1 Publication
Flow Cytometry (Flow)	-	1 Publication
Miscellaneous PubMed (Misc)	-	1 Publication

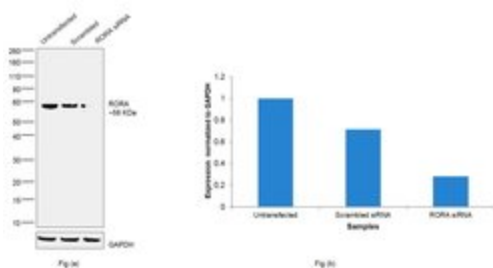
Product Specific Information

PA1-812 detects human ROR alpha protein in transfected cell samples. PA1-812 is specific for alpha isotypes.

PA1-812 has successfully been used in Western blot procedures. By Western blot, this antibody detects an ~56 kDa protein representing ROR alpha in transfected BL21 cells using a pGEX-hROR alpha1-GST vector.

The PA1-812 immunogen is a synthetic peptide corresponding to residues K(541) E L F T S E F E P A M Q I D G(556) of human ROR alpha. This peptide (Cat. # PEP-230) is available for use in neutralization and control experiments.

Advanced Verification Data



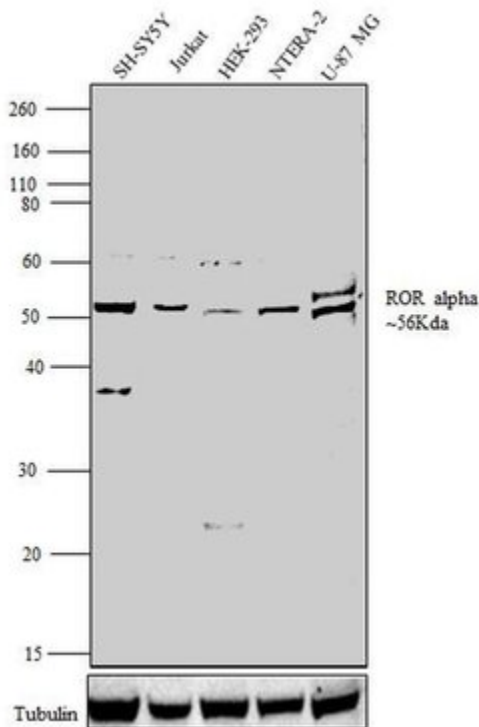
RORA Antibody (PA1-812)

Antibody specificity was demonstrated by siRNA mediated knockdown of target protein. HeLa cells were transfected with RORA siRNA and decrease in signal intensity was observed in western blot application using Anti-RORA Polyclonal Antibody (Product # PA1-812). Knockdown validation info.

Product Images For RORA Polyclonal Antibody

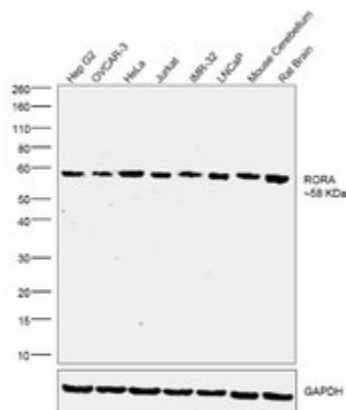
RORA Antibody (PA1-812) in WB

Western blot analysis was performed on whole cell extracts (30 µg lysate) of SH-SY5Y (lane 1), Jurkat (Lane 2), HEK-293 (lane 3), NTERA-2 (Lane 4), and U-87 MG (Lane 5). The blots were probed with ROR alpha Rabbit Polyclonal Antibody (Product # PA1-812, 1:1000) and detected by chemiluminescence Goat Anti-Rabbit IgG Secondary Antibody, HRP conjugate (Product # G-21234, 1:5000 dilution). A 56 kDa band corresponding to ROR alpha was observed across cell lines tested. Known quantity of protein samples were electrophoresed using Novex® NuPAGE® 10 % Bis-Tris gel (Product # NP0301BOX), XCell SureLock™ Electrophoresis System (Product # EI0002) and Novex® Sharp Pre-Stained Protein Standard (Product # LC5800). Resolved proteins were then transferred onto a nitrocellulose membrane with iBlot® 2 Dry Blotting System (Product # IB21001). The membrane was probed with the relevant primary and secondary Antibody following blocking with 5 % skimmed milk. Chemiluminescent detection was performed using Pierce™ ECL Western Blotting Substrate (Product # 32106).



RORA Antibody (PA1-812) in WB

Western blot was performed using anti-RORA Polyclonal Antibody (Product # PA1-812) a 58 kDa and was observed corresponding to RORA across the cell lines and tissues tested. Whole cell Extracts of (30ug lysate) of Hep G2 (Lane 1), OVCAR-3 (Lane 2), HeLa (Lane 3), Jurkat (Lane 4), IMR-32 (Lane 5), LNCaP (Lane 6), tissue extracts of Mouse Cerebellum (Lane 7) and Rat Brain (Lane 8) were electrophoresed using Novex®, NuPAGE® 4-12 % Bis-Tris gel (Product # NP0322BOX). Resolved proteins were then transferred onto a nitrocellulose membrane (Product # IB23001) by iBlot® 2 Dry Blotting System (Product # IB21001). The blot was probed with the primary antibody (1:1000 dilution) and Goat anti-Rabbit IgG (H+L) Superclonal™ Recombinant Secondary Antibody, HRP (Product # A27036, 1:4000 dilution). Chemiluminescent detection was performed using Novex® ECL Chemiluminescent Substrate Reagent Kit (Product # WP20005).



View more figures on thermofisher.com

Western Blot (1)

Nucleic acids research

ROR switches transcriptional mode of ERR that results in transcriptional repression of CYP2E1 under ethanol-exposure.

"PA1-812 was used in ChIP assay and western blot to test if cross-talk between ERRgamma and RORalpha regulates CYP2E1"

Authors: Han YH, Kim DK, Na TY, Ka NL, Choi HS, Lee MO

Species
Human
Mouse
Not Applicable

Dilution
Not Cited
Not Cited
Not Cited

Year
2016

Flow Cytometry (1)

The Journal of clinical investigation

A maresin 1/ROR/12-lipoxygenase autoregulatory circuit prevents inflammation and progression of nonalcoholic steatohepatitis.

"PA1-812 was used in Flow Cytometry to study the hepatic microenvironments that support the function of RORa as a polarity regulator."

Authors: Han YH, Shin KO, Kim JY, Khadka DB, Kim HJ, Lee YM, Cho WJ, Cha JY, Lee BJ, Lee MO

Species
Mouse

Dilution
Not Cited

Year
2019

ChIP assay (1)

Nucleic acids research

ROR switches transcriptional mode of ERR that results in transcriptional repression of CYP2E1 under ethanol-exposure.

"PA1-812 was used in ChIP assay and western blot to test if cross-talk between ERRgamma and RORalpha regulates CYP2E1"

Authors: Han YH, Kim DK, Na TY, Ka NL, Choi HS, Lee MO

Species
Human
Mouse
Not Applicable

Dilution
Not Cited
Not Cited
Not Cited

Year
2016

Miscellaneous PubMed (1)

Nucleic acids research

ROR switches transcriptional mode of ERR that results in transcriptional repression of CYP2E1 under ethanol-exposure.

"PA1-812 was used in ChIP assay and western blot to test if cross-talk between ERRgamma and RORalpha regulates CYP2E1"

Authors: Han YH, Kim DK, Na TY, Ka NL, Choi HS, Lee MO

Species
Human
Mouse
Not Applicable

Dilution
Not Cited
Not Cited
Not Cited

Year
2016

For Research Use Only. Not for use in diagnostic procedures. Not for resale without express authorization. Products are warranted to operate or perform substantially in conformance with published Product specifications in effect at the time of sale, as set forth in the Production documentation, specifications and/or accompanying package inserts ("Documentation"). No claim of suitability for use in applications regulated by FDA is made. The warranty provided herein is valid only when used by properly trained individuals. Unless otherwise stated in the Documentation, this warranty is limited to one year from date of shipment when the Product is subjected to normal, proper and intended usage. This warranty does not extend to anyone other than the Buyer. Any model or sample furnished to Buyer is merely illustrative of the general type and quality of goods and does not represent that any Product will conform to such model or sample. NO OTHER WARRANTIES, EXPRESS OR IMPLIED, ARE GRANTED INCLUDING WITHOUT LIMITATION, IMPLIED WARRANTIES OF MERCHANTABILITY, FITNESS FOR ANY PARTICULAR PURPOSE, OR NON-INFRINGEMENT. BUYER'S EXCLUSIVE REMEDY FOR NON-CONFORMING PRODUCTS DURING THE WARRANTY PERIOD IS LIMITED TO REPAIR, REPLACEMENT OF OR REFUND FOR THE NON-CONFORMING PRODUCT(S) AT SELLER'S SOLE OPTION. THERE IS NO OBLIGATION TO REPAIR, REPLACE OR REFUND FOR PRODUCTS AS THE RESULT OF (I) ACCIDENT, DISASTER OR EVENT OF FORCE MAJEURE, (II) MISUSE, FAULT OR NEGLIGENCE OF OR BY BUYER, (III) USE OF THE PRODUCTS IN A MANNER FOR WHICH THEY WERE NOT DESIGNED, OR (IV) IMPROPER STORAGE AND HANDLING OF THE PRODUCTS. Unless otherwise expressly stated on the Product or in the documentation accompanying the Product, the Product is intended for research only and is not to be used for any other purpose, including without limitation, unauthorized commercial uses, in vitro diagnostic uses, ex vivo or in vivo therapeutic uses, or any type of consumption by or application to human or animals.