

# SNX1 Polyclonal Antibody, Alexa Fluor™ 488

Product Details	
Size	50 µg
Species Reactivity	Human, Mouse
Host/Isotype	Rabbit / IgG
Class	Polyclonal
Type	Antibody
Conjugate	Alexa Fluor™ 488
Excitation/Emission Max	499/520 nm
Immunogen	Synthetic peptide corresponding to residues Q(139) E D Q F D L T V G I T D P E K I(155) of human SNX1.
Form	Liquid
Concentration	1.0 mg/mL
Storage conditions	4° C, store in dark, DO NOT FREEZE!
RRID	AB_2725377

Applications	Tested Dilution	Publications
Immunocytochemistry (ICC/IF)	5 µg/mL	-

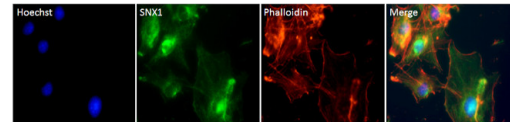
## Product Specific Information

The PA1-836 immunogen is a synthetic peptide corresponding to residues Q(139) E D Q F D L T V G I T D P E K I(155) of human SNX1. This peptide (Cat. # PEP-286) is available for use in neutralization and control experiments.

## Product Images For SNX1 Polyclonal Antibody, Alexa Fluor™ 488

### SNX1 Antibody (PA1-836-A488) in ICC/IF

Immunofluorescent analysis of SNX-1 (green) in HeLa cells. The cells were fixed with 4% Paraformaldehyde for 15 minutes, permeabilized with 0.1% Triton X-100 for 15 minutes, and blocked with 3% BSA for 30 minutes at room temperature. Cells were stained with a SNX-1 rabbit polyclonal antibody (Product # PA1-836-A488) at a concentration of 5 µg/mL in blocking buffer for 1 hour at room temperature. F-actin (red) was stained by Dylight 554 Phalloidin (Product #21834) and nuclei (blue) were stained with Hoechst 33342 (Product # 62249). Images were taken on a Thermo Scientific ToxInsight Instrument at 20X magnification.



For Research Use Only. Not for use in diagnostic procedures. Not for resale without express authorization. Products are warranted to operate or perform substantially in conformance with published Product specifications in effect at the time of sale, as set forth in the Production documentation, specifications and/or accompanying package inserts ("Documentation"). No claim of suitability for use in applications regulated by FDA is made. The warranty provided herein is valid only when used by properly trained individuals. Unless otherwise stated in the Documentation, this warranty is limited to one year from date of shipment when the Product is subjected to normal, proper and intended usage. This warranty does not extend to anyone other than the Buyer. Any model or sample furnished to Buyer is merely illustrative of the general type and quality of goods and does not represent that any Product will conform to such model or sample. NO OTHER WARRANTIES, EXPRESS OR IMPLIED, ARE GRANTED INCLUDING WITHOUT LIMITATION, IMPLIED WARRANTIES OF MERCHANTABILITY, FITNESS FOR ANY PARTICULAR PURPOSE, OR NON INFRINGEMENT. BUYER'S EXCLUSIVE REMEDY FOR NON-CONFORMING PRODUCTS DURING THE WARRANTY PERIOD IS LIMITED TO REPAIR, REPLACEMENT OF OR REFUND FOR THE NON-CONFORMING PRODUCT(S) AT SELLER'S SOLE OPTION. THERE IS NO OBLIGATION TO REPAIR, REPLACE OR REFUND FOR PRODUCTS AS THE RESULT OF (I) ACCIDENT, DISASTER OR EVENT OF FORCE MAJEURE, (II) MISUSE, FAULT OR NEGLIGENCE OF OR BY BUYER, (III) USE OF THE PRODUCTS IN A MANNER FOR WHICH THEY WERE NOT DESIGNED, OR (IV) IMPROPER STORAGE AND HANDLING OF THE PRODUCTS. Unless otherwise expressly stated on the Product or in the documentation accompanying the Product, the Product is intended for research only and is not to be used for any other purpose, including without limitation, unauthorized commercial uses, in vitro diagnostic uses, ex vivo or in vivo therapeutic uses, or any type of consumption by or application to human or animals.