

# MECP2 Polyclonal Antibody

Product Details	
Size	50 µg
Species	Human, Mouse, Rat
Published Species	Rat, Fruit fly, Non-human primate, Human
Expression System	Rabbit / IgG
Class	Polyclonal
Type	Antibody
Conjugate	Unconjugated
Immunogen	Synthetic Peptide: M(1) V A G M L G L R E E K S E D(15) C
Form	Liquid
Concentration	1 mg/mL
Purification	Antigen affinity chromatography
Storage buffer	PBS with 1mg/mL BSA
Contains	0.05% sodium azide
Storage Conditions	-20° C, Avoid Freeze/Thaw Cycles
RRID	AB_2143845

Applications	Tested Dilution	Publications
Immunocytochemistry (ICC)	1:100-1:200	1 Publication
Immunofluorescence (IF)	1:100-1:200	1 Publication
Immunohistochemistry (Paraffin) (IHC (P))	1:200-1:2000	-
Immunoprecipitation (IP)	Assay dependent	-
Western Blot (WB)	1:1500	6 Publications
Immunohistochemistry (IHC)	-	3 Publications

## Product Specific Information

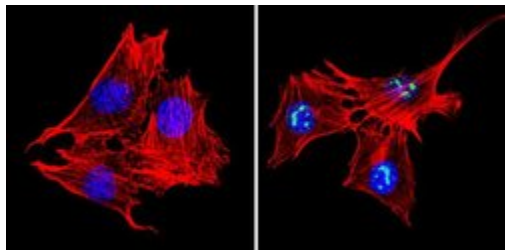
PA1-887 detects methyl CpG binding protein 2 (MeCP2) from human, mouse and rat tissues and cells.

PA1-887 has been successfully used in Western blot, IHC-P, immunofluorescence and immunoprecipitation procedures. By Western blot, this antibody detects an ~56 kDa protein representing MeCP2 from AtT20 cell extract.

PA1-887 immunizing peptide corresponds to amino acid residues 1-15 from mouse MeCP2. This sequence is completely conserved in human MeCP2. PA1-887 immunizing peptide (Cat. # PEP-120) is available for use in neutralization and control experiments.

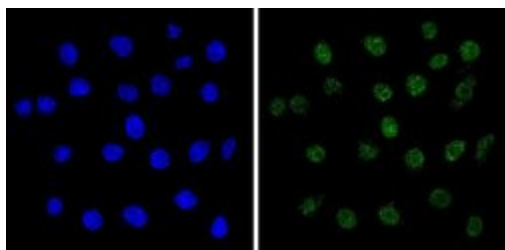
## Product Images For MECP2 Polyclonal Antibody

### MECP2 Antibody (PA1-887) in IF



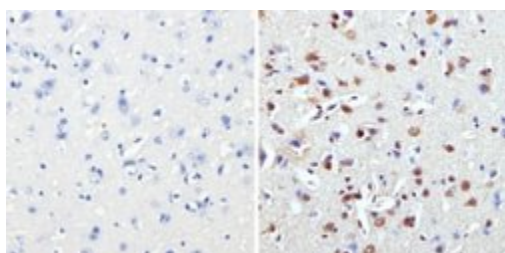
Immunofluorescent analysis of Methyl CpG Binding Protein 2 (green) showing staining in the nucleus of C2C12 cells (right) compared to a negative control without primary antibody (left). Formalin-fixed cells were permeabilized with 0.1% Triton X-100 in TBS for 5-10 minutes and blocked with 3% BSA-PBS for 30 minutes at room temperature. Cells were probed with a Methyl CpG Binding Protein 2 polyclonal antibody (Product # PA1-887) in 3% BSA-PBS at a dilution of 1:200 and incubated overnight at 4°C in a humidified chamber. Cells were washed with PBST and incubated with a DyLight-conjugated secondary antibody in PBS at room temperature in the dark. Actin was stained using Alexa Fluor 554 (red) and nuclei were stained with Hoechst or DAPI (blue). Images were taken at a magnification of 60x.

### MECP2 Antibody (PA1-887) in IF



Immunofluorescent analysis of Methyl CpG Binding Protein 2 (green) showing staining in the nucleus of C6 cells (right) compared to a negative control without primary antibody (left). Formalin-fixed cells were permeabilized with 0.1% Triton X-100 in TBS for 5-10 minutes and blocked with 3% BSA-PBS for 30 minutes at room temperature. Cells were probed with a Methyl CpG Binding Protein 2 polyclonal antibody (Product # PA1-887) in 3% BSA-PBS at a dilution of 1:200 and incubated overnight at 4°C in a humidified chamber. Cells were washed with PBST and incubated with a DyLight-conjugated secondary antibody in PBS at room temperature in the dark. Nuclei were stained with Hoechst or DAPI (blue). Images were taken at a magnification of 60x.

### MECP2 Antibody (PA1-887) in IHC (P)



Immunohistochemistry analysis of Methyl CpG Binding Protein 2 showing staining in the nucleus of paraffin-embedded mouse brain tissue (right) compared to a negative control without primary antibody (left). To expose target proteins, antigen retrieval was performed using 10mM sodium citrate (pH 6.0), microwaved for 8-15 min. Following antigen retrieval, tissues were blocked in 3% H<sub>2</sub>O<sub>2</sub>-methanol for 15 min at room temperature, washed with ddH<sub>2</sub>O and PBS, and then probed with a Methyl CpG Binding Protein 2 polyclonal antibody (Product # PA1-887) diluted in 3% BSA-PBS at a dilution of 1:500 overnight at 4°C in a humidified chamber. Tissues were washed extensively in PBST and detection was performed using an HRP-conjugated secondary antibody followed by colorimetric detection using a DAB kit. Tissues were counterstained with hematoxylin and dehydrated with ethanol and xylene to prep for mounting.

[View more figures on thermofisher.com](https://www.thermofisher.com)

## 11 References

### Western Blot (6)

PloS one

#### Apoptotic Activity of MeCP2 Is Enhanced by C-Terminal Truncating Mutations.

"PA1-887 was used in western blot study the function of the MeCP2 C-terminus"

Authors: Williams AA,Mehler VJ,Mueller C,Vonhoff F,White R,Duch C

**Species**

Fruit fly  
Not Applicable

**Dilution**

1:5000  
Not Cited

**Year**

2017

PloS one

#### Rett Syndrome Mutant Neural Cells Lacks MeCP2 Immunoreactive Bands.

"PA1-887 was used in Western Blotting to advance understanding of multiple MeCP2 immunoreactive bands in control neural cells and p.T158M MeCP2e1 mutant cells."

Authors: Bueno C,Tabares-Seisdedos R,Moraleda JM,Martinez S

**Species**

Human

**Dilution**

Not Cited

**Year**

2016

[View more WB references on thermofisher.com](#)

### Immunofluorescence (1)

Frontiers in psychiatry

#### The Effects of Maternal Separation on Adult Methamphetamine Self-Administration, Extinction, Reinstatement, and MeCP2 Immunoreactivity in the Nucleus Accumbens.

"PA1-887 was used in immunohistochemistry to study adult methamphetamine self-administration, methamphetamine-seeking behaviour and nucleus accumbens MeCP2 levels following maternal separation in rats"

Authors: Lewis CR,Staudinger K,Scheck L,Olive MF

**Species**

Rat

**Dilution**

1:200

**Year**

2013

### Immunohistochemistry (3)

Frontiers in psychiatry

#### The Effects of Maternal Separation on Adult Methamphetamine Self-Administration, Extinction, Reinstatement, and MeCP2 Immunoreactivity in the Nucleus Accumbens.

"PA1-887 was used in immunohistochemistry to study adult methamphetamine self-administration, methamphetamine-seeking behaviour and nucleus accumbens MeCP2 levels following maternal separation in rats"

Authors: Lewis CR,Staudinger K,Scheck L,Olive MF

**Species**

Rat

**Dilution**

1:200

**Year**

2013

[View more IHC references on thermofisher.com](#)

### More applications with references on thermofisher.com

### ICC (1)

For Research Use Only. Not for use in diagnostic procedures. Not for resale without express authorization. Products are warranted to operate or perform substantially in conformance with published Product specifications in effect at the time of sale, as set forth in the Production documentation, specifications and/or accompanying package inserts ("Documentation"). No claim of suitability for use in applications regulated by FDA is made. The warranty provided herein is valid only when used by properly trained individuals. Unless otherwise stated in the Documentation, this warranty is limited to one year from date of shipment when the Product is subjected to normal, proper and intended usage. This warranty does not extend to anyone other than the Buyer. Any model or sample furnished to Buyer is merely illustrative of the general type and quality of goods and does not represent that any Product will conform to such model or sample. NO OTHER WARRANTIES, EXPRESS OR IMPLIED, ARE GRANTED INCLUDING WITHOUT LIMITATION, IMPLIED WARRANTIES OF MERCHANTABILITY, FITNESS FOR ANY PARTICULAR PURPOSE, OR NON INFRINGEMENT. BUYER'S EXCLUSIVE REMEDY FOR NON-CONFORMING PRODUCTS DURING THE WARRANTY PERIOD IS LIMITED TO REPAIR, REPLACEMENT OF OR REFUND FOR THE NON-CONFORMING PRODUCT(S) AT SELLER'S SOLE OPTION. THERE IS NO OBLIGATION TO REPAIR, REPLACE OR REFUND FOR PRODUCTS AS THE RESULT OF (I) ACCIDENT, DISASTER OR EVENT OF FORCE MAJEURE, (II) MISUSE, FAULT OR NEGLIGENCE OF OR BY BUYER, (III) USE OF THE PRODUCTS IN A MANNER FOR WHICH THEY WERE NOT DESIGNED, OR (IV) IMPROPER STORAGE AND HANDLING OF THE PRODUCTS. Unless otherwise expressly stated on the Product or in the documentation accompanying the Product, the Product is intended for research only and is not to be used for any other purpose, including without limitation, unauthorized commercial uses, in vitro diagnostic uses, ex vivo or in vivo therapeutic uses, or any type of consumption by or application to human or animals.