

SEC61B Polyclonal Antibody

Product Details	
Size	100 µL
Species Reactivity	Dog, Human, Mouse, Pig, Rat
Published Species	Human
Host/Isotope	Rabbit / IgG
Class	Polyclonal
Type	Antibody
Conjugate	Unconjugated
Immunogen	Synthetic peptide corresponding to residues M(1) P G P T P S G T N V G S S G R S P S K(20) of canine sec61 beta.
Form	Liquid
Storage buffer	whole serum
Contains	0.05% sodium azide
Storage Conditions	-20° C, Avoid Freeze/Thaw Cycles
RRID	AB_2239072

Applications	Tested	Dilution	Published
Western Blot (WB)	✓	1:20,000	2 Publications
Immunoprecipitation (IP)	-		2 Publications
Immunocytochemistry (ICC)	✓	1:250	
Immunofluorescence (IF)	✓	1:250	

Product Specific Information

PA3-015 detects human, canine and porcine, and rat sec61 beta from microsomes and shows no cross-reactivity with other sec61 isoforms.

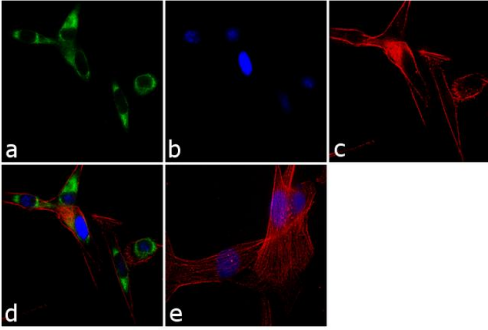
PA3-015 has been successfully used in Western blot procedures. By Western blot, this antibody detects an ~14 kDa protein representing sec61 beta from pig microsomes.

The PA3-015 immunogen is a synthetic peptide corresponding to residues M(1) P G P T P S G T N V G S S G R S P S K(20) of canine sec61 beta. This sequence is completely conserved between human, mouse, and canine.

Product Images For SEC61B Polyclonal Antibody

SEC61B Antibody (PA3-015) in IF

Immunofluorescence analysis of SEC61B was performed using 70% confluent log phase MDCK cells. The cells were fixed with 4% paraformaldehyde for 10 minutes, permeabilized with 0.1% Triton™ X-100 for 10 minutes, and blocked with 1% BSA for 1 hour at room temperature. The cells were labeled with SEC61B Rabbit Polyclonal Antibody (Product # PA3-015) at 1:250 dilution in 0.1% BSA and incubated for 3 hours at room temperature and then labeled with Goat anti-Rabbit IgG (H+L) Superclonal™ Secondary Antibody, Alexa Fluor® 488 conjugate (Product # A27034) at a dilution of 1:2000 for 45 minutes at room temperature (Panel a: green). Nuclei (Panel b: blue) were stained with SlowFade® Gold Antifade Mountant with DAPI (Product # S36938). F-actin (Panel c: red) was stained with Rhodamine Phalloidin (Product # R415, 1:300). Panel d represents the merged image showing cytoplasmic localization. Panel e shows the no primary antibody control. The images were captured at 60X magnification.



Western Blot (2)

Scientific reports

mTORC1 phosphorylates LARP6 to stimulate type I collagen expression.

"PA3015 was used in western blot to find that mTORC1 phosphorylates La ribonucleoprotein domain family, member 6 on S348 and S409"

Authors: Zhang Y,Stefanovic B

Species
Human

Dilution
Not Cited

Year
2017

RNA biology

Characterization of binding of LARP6 to the 5' stem-loop of collagen mRNAs: implications for synthesis of type I collagen.

"PA3-015 was used in immunoprecipitation and western blot to investigate the contribution of the unique sequence of LARP6 to type I collagen biosynthesis"

Authors: Stefanovic L,Longo L,Zhang Y,Stefanovic B

Species
Human
Not Applicable

Dilution
Not Cited
Not Cited

Year
2015

Immunoprecipitation (2)

Scientific reports

mTORC1 phosphorylates LARP6 to stimulate type I collagen expression.

"PA3015 was used in western blot to find that mTORC1 phosphorylates La ribonucleoprotein domain family, member 6 on S348 and S409"

Authors: Zhang Y,Stefanovic B

Species
Human

Dilution
Not Cited

Year
2017

RNA biology

Characterization of binding of LARP6 to the 5' stem-loop of collagen mRNAs: implications for synthesis of type I collagen.

"PA3-015 was used in immunoprecipitation and western blot to investigate the contribution of the unique sequence of LARP6 to type I collagen biosynthesis"

Authors: Stefanovic L,Longo L,Zhang Y,Stefanovic B

Species
Human
Not Applicable

Dilution
Not Cited
Not Cited

Year
2015

For Research Use Only. Not for use in diagnostic procedures. Not for resale without express authorization. Products are warranted to operate or perform substantially in conformance with published Product specifications in effect at the time of sale, as set forth in the Production documentation, specifications and/or accompanying package inserts ("Documentation"). No claim of suitability for use in applications regulated by FDA is made. The warranty provided herein is valid only when used by properly trained individuals. Unless otherwise stated in the Documentation, this warranty is limited to one year from date of shipment when the Product is subjected to normal, proper and intended usage. This warranty does not extend to anyone other than the Buyer. Any model or sample furnished to Buyer is merely illustrative of the general type and quality of goods and does not represent that any Product will conform to such model or sample. NO OTHER WARRANTIES, EXPRESS OR IMPLIED, ARE GRANTED INCLUDING WITHOUT LIMITATION, IMPLIED WARRANTIES OF MERCHANTABILITY, FITNESS FOR ANY PARTICULAR PURPOSE, OR NON INFRINGEMENT. BUYER'S EXCLUSIVE REMEDY FOR NON-CONFORMING PRODUCTS DURING THE WARRANTY PERIOD IS LIMITED TO REPAIR, REPLACEMENT OF OR REFUND FOR THE NON-CONFORMING PRODUCT(S) AT SELLER'S SOLE OPTION. THERE IS NO OBLIGATION TO REPAIR, REPLACE OR REFUND FOR PRODUCTS AS THE RESULT OF (I) ACCIDENT, DISASTER OR EVENT OF FORCE MAJEURE, (II) MISUSE, FAULT OR NEGLIGENCE OF OR BY BUYER, (III) USE OF THE PRODUCTS IN A MANNER FOR WHICH THEY WERE NOT DESIGNED, OR (IV) IMPROPER STORAGE AND HANDLING OF THE PRODUCTS. Unless otherwise expressly stated on the Product or in the documentation accompanying the Product, the Product is intended for research only and is not to be used for any other purpose, including without limitation, unauthorized commercial uses, in vitro diagnostic uses, ex vivo or in vivo therapeutic uses, or any type of consumption by or application to human or animals.