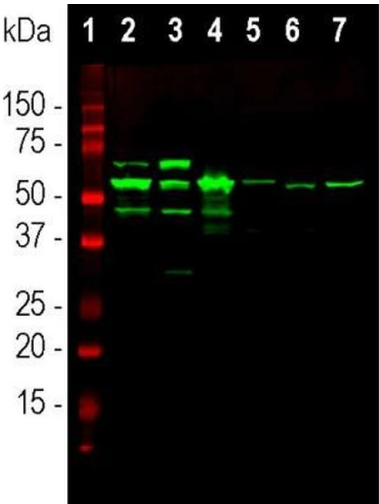


# Peripherin Polyclonal Antibody

Product Details	
Size	100 µL
Species Reactivity	Bovine, Human, Mammal, Mouse, Pig, Rat
Published Species	Mouse
Host/Isotype	Rabbit / IgG
Class	Polyclonal
Type	Antibody
Conjugate	Unconjugated
Immunogen	Full-length recombinant human peripherin expressed in and purified from E.coli.
Form	Liquid
Concentration	Conc. Not Determined
Storage buffer	whole serum
Contains	5mM sodium azide
Storage conditions	Store at 4°C short term. For long term storage, store at -20°C, avoiding freeze/thaw cycles.
RRID	AB_2171349

Applications	Tested Dilution	Publications
Western Blot (WB)	1:1,000-1:2,000	-
Immunohistochemistry (Paraffin) (IHC (P))	Assay-Dependent	-
Immunohistochemistry (Frozen) (IHC (F))	Assay-Dependent	1 Publication
Immunocytochemistry (ICC/IF)	1:2,000	-

Product Images For Peripherin Polyclonal Antibody

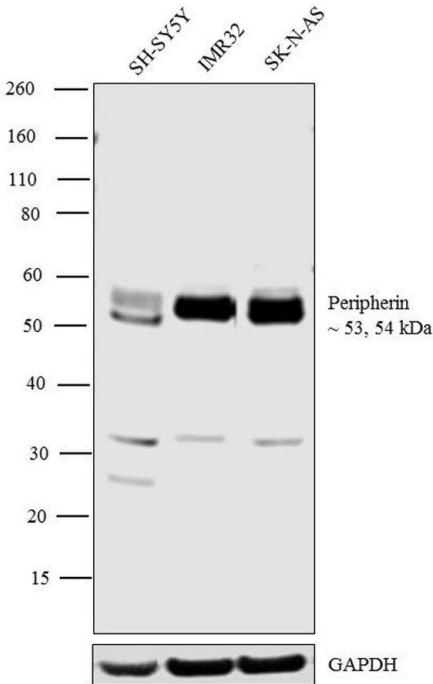


Peripherin Antibody (PA3-16723) in WB

Western blot analysis of Peripherin in tissue and cell lysates using Peripherin . Samples were incubated in Peripherin polyclonal antibody (Product # PA3-16723 using a dilution of 1:10000. Antibody in green: [1] protein standard, [2] rat spinal cord, [3] mouse spinal cord, [4] pig spinal cord, [5] cow spinal cord, [6] SH-SY5Y cells and [7] PC12 cells. The major band at ~57 kDa corresponds to the major peripherin protein isoform, while other bands presumably represent protein products of alternate transcripts of the peripherin gene.

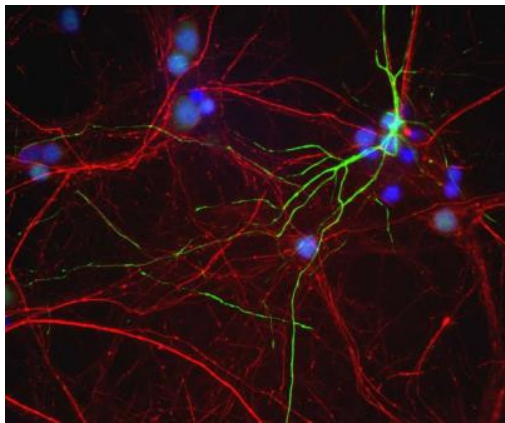
Peripherin Antibody (PA3-16723) in WB

Western blot analysis was performed on whole cell extracts of SH-SY5Y (Lane 1), IMR32 (Lane 2) and SK-N-AS (Lane 3). The blot was probed with Anti-Peripherin Polyclonal Antibody (Product # PA3-16723, 1:2,500 dilution) and detected by chemiluminescence using Goat anti-Rabbit IgG (Heavy Chain) Superclonal™ Secondary Antibody, HRP conjugate (Product # A27036, 0.25 µg /mL, 1:4,000 dilution). 53, 54 kDa bands corresponding to Peripherin was observed across the cell lines tested.



Peripherin Antibody (PA3-16723) in ICC/IF

Immunocytochemistry analysis of Peripherin in mixed neuron/glia cultures from newborn rat brain. Samples were incubated in Peripherin polyclonal antibody (Product # PA3-16723). Antibody to peripherin (green) and chicken polyclonal antibody to phosphorylated NF-H (red channel). A class of large neurons, like the one at the top right of this image, contain peripherin, while the majority of neurons and their processes contain NF-H and not peripherin. The blue channel reveals the localization of DNA.



1 Reference

Immunohistochemistry (Frozen) (1)

<p>eLife</p> <p><b>Protective role of neuronal and lymphoid cannabinoid CB<sub>2</sub> receptors in neuropathic pain.</b></p> <p>"PA3-16723 was used in Immunohistochemistry (Frozen) to study the role of the cannabinoid 2 receptor in regulating spontaneous neuropathic pain through allowing self administration of a CB2 agonist in wildtype and CB2 knockout mice models."</p> <p>Authors: Cabañero D,Ramírez-López A,Drews E,Schmöle A,Otte DM,Wawrzczak-Bargiela A,Huerga Encabo H, Kummer S,Ferrer-Montiel A,Przewlocki R,Zimmer A,Maldonado R</p>	<p><b>Year</b> 2020</p> <p><b>Species</b> Mouse</p> <p><b>Dilution</b> 1:200</p>
--	--

For Research Use Only. Not for use in diagnostic procedures. Not for resale without express authorization. Products are warranted to operate or perform substantially in conformance with published Product specifications in effect at the time of sale, as set forth in the Production documentation, specifications and/or accompanying package inserts ("Documentation"). No claim of suitability for use in applications regulated by FDA is made. The warranty provided herein is valid only when used by properly trained individuals. Unless otherwise stated in the Documentation, this warranty is limited to one year from date of shipment when the Product is subjected to normal, proper and intended usage. This warranty does not extend to anyone other than the Buyer. Any model or sample furnished to Buyer is merely illustrative of the general type and quality of goods and does not represent that any Product will conform to such model or sample. NO OTHER WARRANTIES, EXPRESS OR IMPLIED, ARE GRANTED INCLUDING WITHOUT LIMITATION, IMPLIED WARRANTIES OF MERCHANTABILITY, FITNESS FOR ANY PARTICULAR PURPOSE, OR NON INFRINGEMENT. BUYER'S EXCLUSIVE REMEDY FOR NON-CONFORMING PRODUCTS DURING THE WARRANTY PERIOD IS LIMITED TO REPAIR, REPLACEMENT OF OR REFUND FOR THE NON-CONFORMING PRODUCT(S) AT SELLER'S SOLE OPTION. THERE IS NO OBLIGATION TO REPAIR, REPLACE OR REFUND FOR PRODUCTS AS THE RESULT OF (I) ACCIDENT, DISASTER OR EVENT OF FORCE MAJEURE, (II) MISUSE, FAULT OR NEGLIGENCE OF OR BY BUYER, (III) USE OF THE PRODUCTS IN A MANNER FOR WHICH THEY WERE NOT DESIGNED, OR (IV) IMPROPER STORAGE AND HANDLING OF THE PRODUCTS. Unless otherwise expressly stated on the Product or in the documentation accompanying the Product, the Product is intended for research only and is not to be used for any other purpose, including without limitation, unauthorized commercial uses, in vitro diagnostic uses, ex vivo or in vivo therapeutic uses, or any type of consumption by or application to human or animals.