

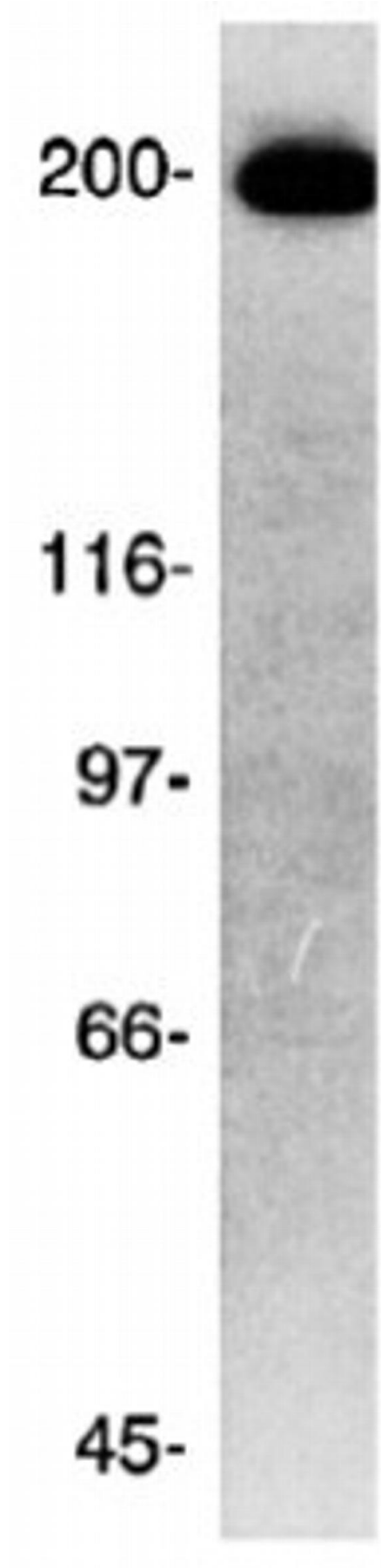
# CKAP5 Polyclonal Antibody

Product Details	
Size	100 µL
Species Reactivity	Human, Mammal, Mouse, Rat
Published Species	Mouse
Host/Isotype	Rabbit / IgG
Class	Polyclonal
Type	Antibody
Conjugate	Unconjugated
Immunogen	Produced by immunizing rabbits with a recombinant segment of the C-terminal domain of the human protein.
Form	Liquid
Concentration	Conc. Not Determined
Storage buffer	whole serum
Contains	no preservative
Storage conditions	-20° C, Avoid Freeze/Thaw Cycles
RRID	AB_2080734

Applications	Tested Dilution	Publications
Western Blot (WB)	1:1,000	1 Publication
Immunocytochemistry (ICC/IF)	1:1,000	-
Immunoprecipitation (IP)	1:10-1:500	-

Product Images For CKAP5 Polyclonal Antibody

**CKAP5 Antibody (PA3-16835) in WB**  
Western blot analysis of CKAP5 in 50 mg total cell protein from human HeLa cells. Samples were incubated in CKAP5 polyclonal antibody (Product # PA3-16835). Immunoblotted with a rabbit polyclonal serum generated against the C-terminal 301 amino acids of the ch-TOGp.



Western Blot (1)

International journal of molecular sciences	Year 2020
<b>Sperm Motility of Mice under Simulated Microgravity and Hypergravity.</b>	Species Mouse
"PA3-16835 was used in Western Blotting to determine the effect of simulated micro- and hypergravity on mouse sperm motility and the mechanisms of this change."	Dilution 1:1000
Authors: Ogneva IV,Usik MA,Biryukov NS,Zhdankina YS	

For Research Use Only. Not for use in diagnostic procedures. Not for resale without express authorization. Products are warranted to operate or perform substantially in conformance with published Product specifications in effect at the time of sale, as set forth in the Production documentation, specifications and/or accompanying package inserts ("Documentation"). No claim of suitability for use in applications regulated by FDA is made. The warranty provided herein is valid only when used by properly trained individuals. Unless otherwise stated in the Documentation, this warranty is limited to one year from date of shipment when the Product is subjected to normal, proper and intended usage. This warranty does not extend to anyone other than the Buyer. Any model or sample furnished to Buyer is merely illustrative of the general type and quality of goods and does not represent that any Product will conform to such model or sample. NO OTHER WARRANTIES, EXPRESS OR IMPLIED, ARE GRANTED INCLUDING WITHOUT LIMITATION, IMPLIED WARRANTIES OF MERCHANTABILITY, FITNESS FOR ANY PARTICULAR PURPOSE, OR NON-INFRINGEMENT. BUYER'S EXCLUSIVE REMEDY FOR NON-CONFORMING PRODUCTS DURING THE WARRANTY PERIOD IS LIMITED TO REPAIR, REPLACEMENT OF OR REFUND FOR THE NON-CONFORMING PRODUCT(S) AT SELLER'S SOLE OPTION. THERE IS NO OBLIGATION TO REPAIR, REPLACE OR REFUND FOR PRODUCTS AS THE RESULT OF (I) ACCIDENT, DISASTER OR EVENT OF FORCE MAJEURE, (II) MISUSE, FAULT OR NEGLIGENCE OF OR BY BUYER, (III) USE OF THE PRODUCTS IN A MANNER FOR WHICH THEY WERE NOT DESIGNED, OR (IV) IMPROPER STORAGE AND HANDLING OF THE PRODUCTS. Unless otherwise expressly stated on the Product or in the documentation accompanying the Product, the Product is intended for research only and is not to be used for any other purpose, including without limitation, unauthorized commercial uses, in vitro diagnostic uses, ex vivo or in vivo therapeutic uses, or any type of consumption by or application to human or animals.