

Calreticulin Polyclonal Antibody

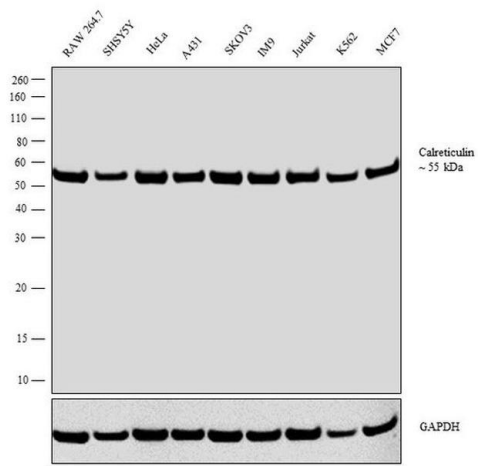
Product Details	
Size	100 µL
Species Reactivity	Bovine, Hamster, Human, Mouse, Non-human primate, Rat
Host/Isotype	Rabbit / IgG
Class	Polyclonal
Type	Antibody
Conjugate	Unconjugated
Immunogen	A fusion protein to mouse calreticulin.
Form	Liquid
Concentration	1 mg/mL
Purification	Antigen affinity chromatography
Storage buffer	PBS
Contains	0.02% sodium azide
Storage conditions	-20°C or -80°C if preferred
RRID	AB_2069604

Applications	Tested Dilution	Publications
Western Blot (WB)	1:1,000	-
Immunohistochemistry (Paraffin) (IHC (P))	1:50-1:200	-
Immunocytochemistry (ICC/IF)	1:50-1:250	-
Flow Cytometry (Flow)	Assay-Dependent	-
Immunoprecipitation (IP)	Assay-Dependent	-
Neutralization (Neu)	Assay-Dependent	-
Dot blot (DB)	Assay-Dependent	-
Immunomicroscopy (IM)	Assay-Dependent	-

Product Specific Information

Suggested positive control: antigen standard for CALR (transient overexpression lysate).

Product Images For Calreticulin Polyclonal Antibody

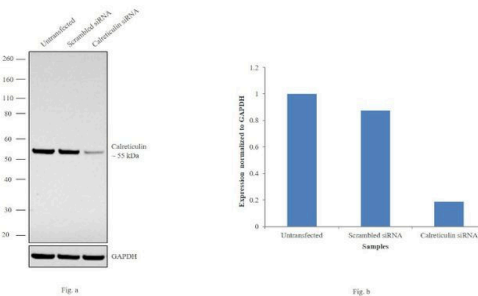


Calreticulin Antibody (PA3-16862) in WB

Western blot analysis was performed on whole cell extract (30 µg lysate) of RAW 264.7 (Lane 1), SHSY5Y (Lane 2), HeLa (Lane 3), A431 (Lane 4), SKOV3 (Lane 5), IM9 (Lane 6), Jurkat (Lane 7), K562 (Lane 8) and MCF7 (Lane 9). The blot was probed with Anti-Calreticulin Polyclonal Antibody (Product # PA3-16862, 1: 2,000 dilution) and detected by chemiluminescence using Goat anti-Rabbit IgG (Heavy Chain) Superclonal™ Secondary Antibody, HRP conjugate (Product # A27036, 0.25 µg/mL, 1:4,000 dilution). A 55 kDa band corresponding to Calreticulin was observed in all cell lines tested.

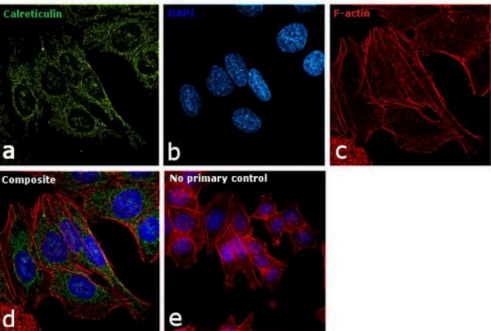
Calreticulin Antibody (PA3-16862)

Antibody specificity was demonstrated by siRNA mediated knockdown of target protein. HeLa cells were transfected with Calreticulin siRNA and reduction of signal was observed in Western Blot using Calreticulin Polyclonal Antibody (Product # PA3-16862). {KD}



Calreticulin Antibody (PA3-16862) in ICC/IF

Immunofluorescence analysis of Calreticulin was performed using 70% confluent log phase U-2 OS cells. The cells were fixed with 4% paraformaldehyde for 10 minutes, permeabilized with 0.1% Triton™ X-100 for 15 minutes, and blocked with 1% BSA for 1 hour at room temperature. The cells were labeled with Calreticulin Polyclonal Antibody (Product # PA3-16862) at 1:200 dilution in 0.1% BSA, incubated at 4 degree Celsius overnight and then labeled with Goat anti-Rabbit IgG (Heavy Chain) Superclonal™ Secondary Antibody, Alexa Fluor® 488 conjugate (Product # A27034) at a dilution of 1:2000 for 45 minutes at room temperature (Panel a: green). Nuclei (Panel b: blue) were stained with SlowFade® Gold Antifade Mountant with DAPI (Product # S36938). F-actin (Panel c: red) was stained with Rhodamine Phalloidin (Product # R415, 1:300). Panel d represents the merged image showing endoplasmic reticulum and mitochondrial localization. Panel e represents control cells with no primary antibody to assess background. The images were captured at 60X magnification.



View more figures on thermofisher.com

For Research Use Only. Not for use in diagnostic procedures. Not for resale without express authorization. Products are warranted to operate or perform substantially in conformance with published Product specifications in effect at the time of sale, as set forth in the Production documentation, specifications and/or accompanying package inserts ("Documentation"). No claim of suitability for use in applications regulated by FDA is made. The warranty provided herein is valid only when used by properly trained individuals. Unless otherwise stated in the Documentation, this warranty is limited to one year from date of shipment when the Product is subjected to normal, proper and intended usage. This warranty does not extend to anyone other than the Buyer. Any model or sample furnished to Buyer is merely illustrative of the general type and quality of goods and does not represent that any Product will conform to such model or sample. NO OTHER WARRANTIES, EXPRESS OR IMPLIED, ARE GRANTED INCLUDING WITHOUT LIMITATION, IMPLIED WARRANTIES OF MERCHANTABILITY, FITNESS FOR ANY PARTICULAR PURPOSE, OR NON-INFRINGEMENT. BUYER'S EXCLUSIVE REMEDY FOR NON-CONFORMING PRODUCTS DURING THE WARRANTY PERIOD IS LIMITED TO REPAIR, REPLACEMENT OF OR REFUND FOR THE NON-CONFORMING PRODUCT(S) AT SELLER'S SOLE OPTION. THERE IS NO OBLIGATION TO REPAIR, REPLACE OR REFUND FOR PRODUCTS AS THE RESULT OF (I) ACCIDENT, DISASTER OR EVENT OF FORCE MAJEURE, (II) MISUSE, FAULT OR NEGLIGENCE OF OR BY BUYER, (III) USE OF THE PRODUCTS IN A MANNER FOR WHICH THEY WERE NOT DESIGNED, OR (IV) IMPROPER STORAGE AND HANDLING OF THE PRODUCTS. Unless otherwise expressly stated on the Product or in the documentation accompanying the Product, the Product is intended for research only and is not to be used for any other purpose, including without limitation, unauthorized commercial uses, in vitro diagnostic uses, ex vivo or in vivo therapeutic uses, or any type of consumption by or application to human or animals.