

PDX1 Polyclonal Antibody

Product Details

Size	100µL
Species Reactivity	Human, Mouse
Published Species	Human
Host/Isotope	Rabbit / IgG
Class	Polyclonal
Type	Antibody
Conjugate	Unconjugated
Immunogen	Synthetic Peptide: Q(21) R G P A P E F S A S P P A C(35)
Form	Liquid
Storage buffer	whole serum
Contains	0.05% sodium azide
Storage Conditions	-20° C, Avoid Freeze/Thaw Cycles

Applications	Tested	Dilution	Published
Immunohistochemistry (IHC)	✓	1:500	1 Publication
Immunocytochemistry (ICC)	✓	1:500	
Immunofluorescence (IF)	✓	1:500	
Western Blot (WB)	✓	1:3,000	

Product Specific Information

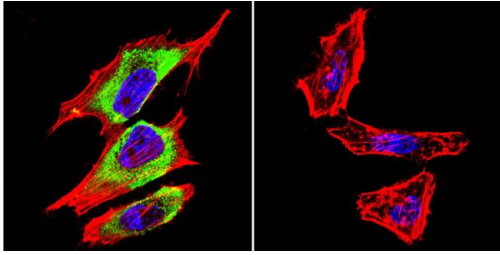
PA3-830 detects human and mouse pdx-1 alpha and shows no cross-reactivity to other pdx isoforms.

PA3-830 has been successfully used in Western blot, immunohistochemical, and immunofluorescence procedures. By Western blot, this antibody detects an ~35 kDa protein.

PA3-830 immunogen is a KLH conjugated synthetic peptide corresponding to amino acid residues 21-35 from human pdx-1 protein. This antibody is generated against the N-terminal portion of the protein, while PA3-831 is C-terminal.

The PA3-830 antibody recognizes both cytoplasmic and nuclear proteins. Formalin-fixed tissues can cause high background, so counterstaining with another antibody which is mainly expressed in the cytoplasm (i.e. insulin) is recommended.

Product Images For PDX1 Polyclonal Antibody



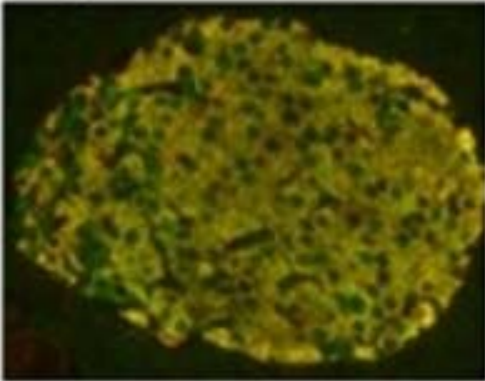
PDX1 Antibody (PA3-830)

Immunofluorescent analysis of PDX-1 in HeLa Cells. Cells were grown on chamber slides and fixed with formaldehyde prior to staining. Cells were probed without (control) or with a PDX-1 polyclonal antibody (Product # PA3-830) at a dilution of 1:200 overnight at 4 C, washed with PBS and incubated with a DyLight-488 conjugated secondary antibody (Product # 35552). PDX-1 staining (green), F-Actin staining with Phalloidin (red) and nuclei with DAPI (blue) is shown. Images were taken at 60X magnification.

PDX1 Antibody (PA3-830)

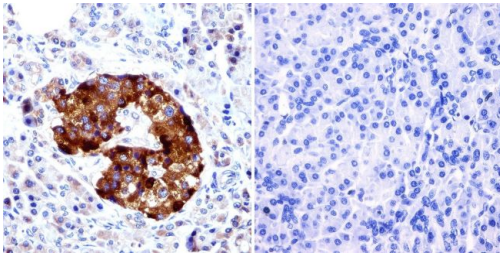
Immunofluorescent staining of pdx-1 in mouse islet cells using PA3-830 and counterstaining (merge) with insulin. The PA3-830 antibody recognizes both cytoplasmic and nuclear proteins. Formalin-fixed tissues can cause high background, so counterstaining with another antibody which is mainly expressed in the cytoplasm (i.e. insulin) is recommended.

Fig. 2



PDX1 Antibody (PA3-830)

Immunohistochemistry was performed on normal biopsies of deparaffinized human pancreas tissue. To expose target proteins, heat induced antigen retrieval was performed using 10mM sodium citrate (pH6.0) buffer, microwaved for 8-15 minutes. Following antigen retrieval tissues were blocked in 3% BSA-PBS for 30 minutes at room temperature. Tissues were then probed at a dilution of 1:200 with a Rabbit Polyclonal Antibody recognizing PDX-1 (PA3-830) or without primary antibody (negative control) overnight at 4°C in a humidified chamber. Tissues were washed extensively with PBST and endogenous peroxidase activity was quenched with a peroxidase suppressor. Detection was performed using a biotin-conjugated secondary antibody and SA-HRP, followed by colorimetric detection using DAB. Tissues were counterstained with hematoxylin and prepped for mounting.



[View more figures on thermofisher.com](https://www.thermofisher.com)

Immunohistochemistry (1)

World journal of surgery

Tissue MicroArray analyses of pancreatic duodenal homeobox-1 in human cancers.

"PA3-830 was used in immunohistochemistry to investigate the expression of PDX-1 in human cancers through tissue microarray analyses"

Authors: Wang XP,Li ZJ,Magnusson J,Brunicardi FC

Species
Human

Dilution
1:100

Year
2005

For Research Use Only. Not for use in diagnostic procedures. Not for resale without express authorization. Products are warranted to operate or perform substantially in conformance with published Product specifications in effect at the time of sale, as set forth in the Production documentation, specifications and/or accompanying package inserts ("Documentation"). No claim of suitability for use in applications regulated by FDA is made. The warranty provided herein is valid only when used by properly trained individuals. Unless otherwise stated in the Documentation, this warranty is limited to one year from date of shipment when the Product is subjected to normal, proper and intended usage. This warranty does not extend to anyone other than the Buyer. Any model or sample furnished to Buyer is merely illustrative of the general type and quality of goods and does not represent that any Product will conform to such model or sample. NO OTHER WARRANTIES, EXPRESS OR IMPLIED, ARE GRANTED INCLUDING WITHOUT LIMITATION, IMPLIED WARRANTIES OF MERCHANTABILITY, FITNESS FOR ANY PARTICULAR PURPOSE, OR NON INFRINGEMENT. BUYER'S EXCLUSIVE REMEDY FOR NON-CONFORMING PRODUCTS DURING THE WARRANTY PERIOD IS LIMITED TO REPAIR, REPLACEMENT OF OR REFUND FOR THE NON-CONFORMING PRODUCT(S) AT SELLER'S SOLE OPTION. THERE IS NO OBLIGATION TO REPAIR, REPLACE OR REFUND FOR PRODUCTS AS THE RESULT OF (I) ACCIDENT, DISASTER OR EVENT OF FORCE MAJEURE, (II) MISUSE, FAULT OR NEGLIGENCE OF OR BY BUYER, (III) USE OF THE PRODUCTS IN A MANNER FOR WHICH THEY WERE NOT DESIGNED, OR (IV) IMPROPER STORAGE AND HANDLING OF THE PRODUCTS. Unless otherwise expressly stated on the Product or in the documentation accompanying the Product, the Product is intended for research only and is not to be used for any other purpose, including without limitation, unauthorized commercial uses, in vitro diagnostic uses, ex vivo or in vivo therapeutic uses, or any type of consumption by or application to human or animals.