

EphA3 (extracellular) Polyclonal Antibody

Product Details	
Size	50 µL
Species Reactivity	Human, Mouse, Rat
Host/Isotype	Rabbit / IgG
Class	Polyclonal
Type	Antibody
Conjugate	Unconjugated
Immunogen	Peptide corresponding to amino acid residues 488-500 of human EphA3 (Extracellular, N-terminus)
Form	Lyophilized
Concentration	0.8 mg/mL
Storage conditions	-20°C
RRID	AB_2857181

Applications	Tested Dilution	Publications
Western Blot (WB)	1:200	-
Immunohistochemistry (Frozen) (IHC (F))	1:200	-
Immunocytochemistry (ICC/IF)	Assay-dependent	-
Flow Cytometry (Flow)	5 µg	-

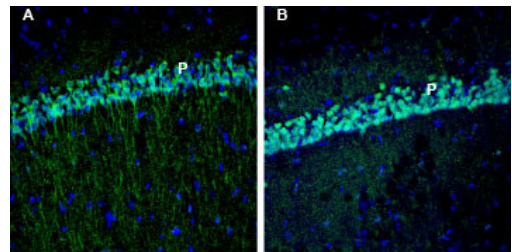
Product Specific Information

Reconstitute antibody with 50 µL of double distilled water (DDW). The reconstituted solution can be stored at 4 degrees C for up to 1 week. For longer periods, small aliquots should be stored at -20 degrees C. Avoid multiple freezing and thawing. Centrifuge all antibody preparations before use (10000 x g 5 min).

Peptide sequence is: (C)RARGTNV TISSLK

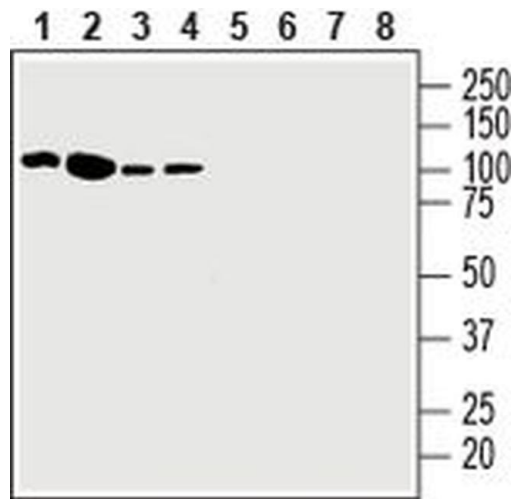
Homology: Rat, mouse amino acid residues are identical.

Product Images For EphA3 (extracellular) Polyclonal Antibody



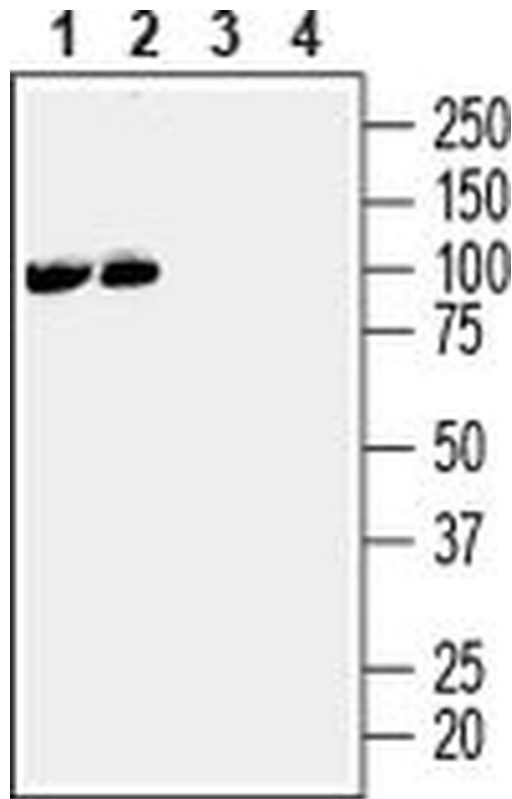
EphA3 (extracellular) Antibody (PA5-111771) in IHC (F)

Immunohistochemistry analysis of EphA3 in perfusion-fixed, frozen rat and mouse hippocampus tissue sections using EphA3 (extracellular) Antibody (Product # PA5-111771) at a dilution of 1:200, followed by goat anti-rabbit-AlexaFluor-488. A) EphA3 staining (green) in rat hippocampal CA1 region is detected in the pyramidal layer (P). B) In mouse hippocampal CA1 region, EphA3 immunoreactivity (green) is observed in the pyramidal layer (P). Cell nuclei are stained with DAPI (blue).



EphA3 (extracellular) Antibody (PA5-111771) in WB

Western Blot analysis of EphA3 was performed in human Jurkat T-cell leukemia cell line lysate (lanes 1 and 5), human K562 chronic myelogenous leukemia cell line lysate (lanes 2 and 6), human Malme-3M melanoma cell line lysate (lanes 3 and 7) and human HT-29 colorectal adenocarcinoma cell line lysate (lanes 4 and 8). Lane 1-4: EphA3 (extracellular) Antibody (Product # PA5-111771) at a dilution of 1:200. Lane 5-8: EphA3 (extracellular) Antibody preincubated with the negative control antigen.



EphA3 (extracellular) Antibody (PA5-111771) in WB

Western Blot analysis of EphA3 was performed in mouse (lanes 1 and 3) and rat (lanes 2 and 4) brain membranes. Lane 1,2: EphA3 (extracellular) Antibody (Product # PA5-111771) at a dilution of 1:200. Lane 3,4: EphA3 (extracellular) Antibody preincubated with the negative control antigen.

View more figures on thermofisher.com

For Research Use Only. Not for use in diagnostic procedures. Not for resale without express authorization. Products are warranted to operate or perform substantially in conformance with published Product specifications in effect at the time of sale, as set forth in the Production documentation, specifications and/or accompanying package inserts ("Documentation"). No claim of suitability for use in applications regulated by FDA is made. The warranty provided herein is valid only when used by properly trained individuals. Unless otherwise stated in the Documentation, this warranty is limited to one year from date of shipment when the Product is subjected to normal, proper and intended usage. This warranty does not extend to anyone other than the Buyer. Any model or sample furnished to Buyer is merely illustrative of the general type and quality of goods and does not represent that any Product will conform to such model or sample. NO OTHER WARRANTIES, EXPRESS OR IMPLIED, ARE GRANTED INCLUDING WITHOUT LIMITATION, IMPLIED WARRANTIES OF MERCHANTABILITY, FITNESS FOR ANY PARTICULAR PURPOSE, OR NON-INFRINGEMENT. BUYER'S EXCLUSIVE REMEDY FOR NON-CONFORMING PRODUCTS DURING THE WARRANTY PERIOD IS LIMITED TO REPAIR, REPLACEMENT OF OR REFUND FOR THE NON-CONFORMING PRODUCT(S) AT SELLER'S SOLE OPTION. THERE IS NO OBLIGATION TO REPAIR, REPLACE OR REFUND FOR PRODUCTS AS THE RESULT OF (i) ACCIDENT, DISASTER OR EVENT OF FORCE MAJEURE, (ii) MISUSE, FAULT OR NEGLIGENCE OF OR BY BUYER, (iii) USE OF THE PRODUCTS IN A MANNER FOR WHICH THEY WERE NOT DESIGNED, OR (iv) IMPROPER STORAGE AND HANDLING OF THE PRODUCTS. Unless otherwise expressly stated on the Product or in the documentation accompanying the Product, the Product is intended for research only and is not to be used for any other purpose, including without limitation, unauthorized commercial uses, in vitro diagnostic uses, ex vivo or in vivo therapeutic uses, or any type of consumption by or application to human or animals.

