

SCN5A Polyclonal Antibody

Product Details	
Size	50 µL
Species Reactivity	Human, Rat
Host/Isotype	Rabbit / IgG
Class	Polyclonal
Type	Antibody
Conjugate	Unconjugated
Immunogen	GSTfusion protein with amino acid residues 1978-2016 of human NaV1.5 (Intracellular, C-terminus)
Form	Lyophilized
Concentration	1 mg/mL
Storage conditions	-20°C
RRID	AB_2857311

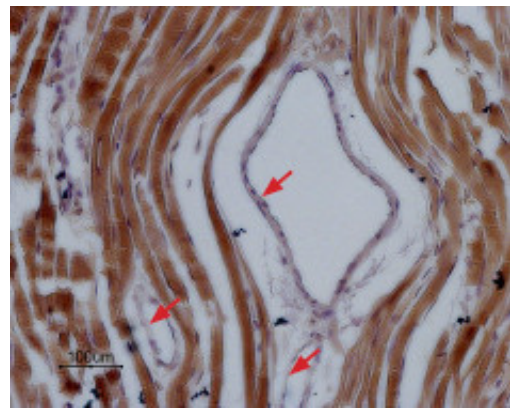
Applications	Tested Dilution	Publications
Western Blot (WB)	1:200	-
Immunohistochemistry (Paraffin) (IHC (P))	1:100	-
Immunocytochemistry (ICC/IF)	Assay-dependent	-
Flow Cytometry (Flow)	Assay-dependent	-

Product Specific Information

Reconstitute antibody with 50 µL of double distilled water (DDW). The reconstituted solution can be stored at 4 degrees C for up to 1 week. For longer periods, small aliquots should be stored at -20 degrees C. Avoid multiple freezing and thawing. Centrifuge all antibody preparations before use (10000 x g 5 min).

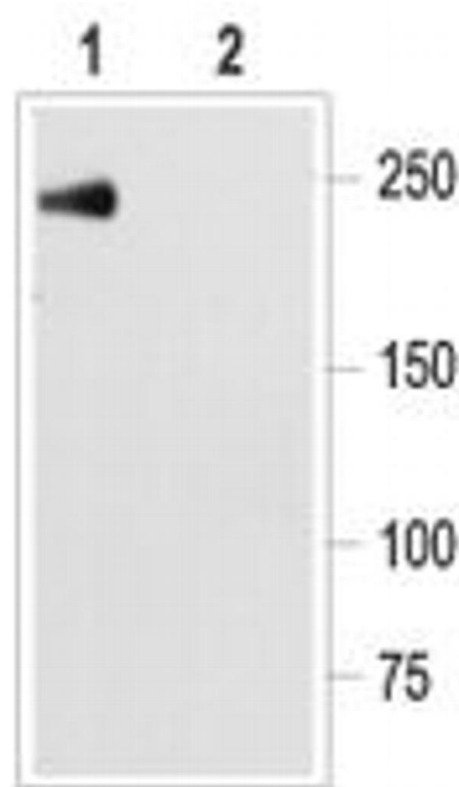
Homology: Rat - 36/39 amino acid residues identical; mouse - 34/39 amino acid residues identical.

Product Images For SCN5A Polyclonal Antibody



SCN5A Antibody (PA5-111903) in IHC (P)

Immunohistochemistry analysis of SCN5A in paraffin-embedded rat cardiac muscle tissue sections using SCN5A Antibody (Product # PA5-111903) at a dilution of 1:100. A) SCN5A Antibody. Staining is specific for cardiomyocytes while smooth muscles cells in the artery walls are negative (red arrows). Hematoxylin is used as the counterstain.



SCN5A Antibody (PA5-111903) in WB

Western Blot analysis of SCN5A was performed in NaV1.5 in NaV1.5 transfected HEK-293 cells. Lane 1: SCN5A Antibody (Product # PA5-111903) at a dilution of 1:200. Lane 2: SCN5A Antibody, preincubated with the control peptide antigen.

For Research Use Only. Not for use in diagnostic procedures. Not for resale without express authorization. Products are warranted to operate or perform substantially in conformance with published Product specifications in effect at the time of sale, as set forth in the Production documentation, specifications and/or accompanying package inserts ("Documentation"). No claim of suitability for use in applications regulated by FDA is made. The warranty provided herein is valid only when used by properly trained individuals. Unless otherwise stated in the Documentation, this warranty is limited to one year from date of shipment when the Product is subjected to normal, proper and intended usage. This warranty does not extend to anyone other than the Buyer. Any model or sample furnished to Buyer is merely illustrative of the general type and quality of goods and does not represent that any Product will conform to such model or sample. NO OTHER WARRANTIES, EXPRESS OR IMPLIED, ARE GRANTED INCLUDING WITHOUT LIMITATION, IMPLIED WARRANTIES OF MERCHANTABILITY, FITNESS FOR ANY PARTICULAR PURPOSE, OR NON INFRINGEMENT. BUYER'S EXCLUSIVE REMEDY FOR NON-CONFORMING PRODUCTS DURING THE WARRANTY PERIOD IS LIMITED TO REPAIR, REPLACEMENT OF OR REFUND FOR THE NON-CONFORMING PRODUCT(S) AT SELLER'S SOLE OPTION. THERE IS NO OBLIGATION TO REPAIR, REPLACE OR REFUND FOR PRODUCTS AS THE RESULT OF (I) ACCIDENT, DISASTER OR EVENT OF FORCE MAJEURE, (II) MISUSE, FAULT OR NEGLIGENCE OF OR BY BUYER, (III) USE OF THE PRODUCTS IN A MANNER FOR WHICH THEY WERE NOT DESIGNED, OR (IV) IMPROPER STORAGE AND HANDLING OF THE PRODUCTS. Unless otherwise expressly stated on the Product or in the documentation accompanying the Product, the Product is intended for research only and is not to be used for any other purpose, including without limitation, unauthorized commercial uses, in vitro diagnostic uses, ex vivo or in vivo therapeutic uses, or any type of consumption by or application to human or animals.