

# CTAGE1 Polyclonal Antibody

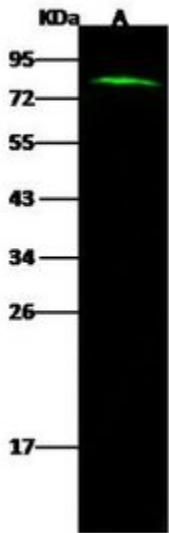
Product Details	
Size	100 µL
Species Reactivity	Human
Host/Isotype	Rabbit / IgG
Class	Polyclonal
Type	Antibody
Conjugate	Unconjugated
Immunogen	A synthetic peptide corresponding to the N-terminus of the Human CTAGE1
Form	Liquid
Purification	Antigen affinity chromatography
Storage buffer	PBS
Contains	no preservative
Storage Conditions	Store at 4°C short term. For long term storage, store at -20°C, avoiding freeze/thaw cycles.
RRID	AB_2866843

Applications	Tested Dilution	Publications
Western Blot (WB)	1:500-1:1,000	-
Immunoprecipitation (IP)	0.2-1 µL/mg lysate	-

## Product Images For CTAGE1 Polyclonal Antibody

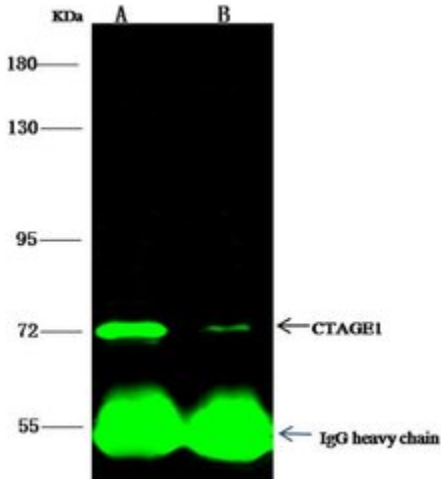
### CTAGE1 Antibody (PA5-112107) in WB

Western Blot analysis of CTAGE1 using CTAGE1 Polyclonal Antibody (Product # PA5-112107) at a dilution of 1:500. Lane A: MDA-MB453 whole cell lysate, (Lysates /proteins at 30 µg per lane). The secondary antibody used was a Goat Anti-Rabbit IgG H&L (Dylight 800) at 1:10,000 dilution. Developed using the Odyssey technique and performed under reducing conditions. Predicted band size: 85 kDa. Observed band size: 85 kDa.



### CTAGE1 Antibody (PA5-112107) in IP

Immunoprecipitation of CTAGE1 was performed on (Lane A) 0.5 mg 293T whole cell lysate and (Lane B) 0.5 mg Hela whole cell lysate, using 0.5 µL of CTAGE1 Polyclonal Antibody (Product # PA5-112107) at a dilution of 1:500 and 15 µL of 50 % Protein G agarose. A Dylight 800-labeled antibody to rabbit IgG (H+L) was used as a secondary antibody at a 1:5000 dilution. Developed using the odyssey technique and performed under reducing conditions. Predicted band size: 85 kDa. Observed band size: 85 kDa.



For Research Use Only. Not for use in diagnostic procedures. Not for resale without express authorization. Products are warranted to operate or perform substantially in conformance with published Product specifications in effect at the time of sale, as set forth in the Production documentation, specifications and/or accompanying package inserts ("Documentation"). No claim of suitability for use in applications regulated by FDA is made. The warranty provided herein is valid only when used by properly trained individuals. Unless otherwise stated in the Documentation, this warranty is limited to one year from date of shipment when the Product is subjected to normal, proper and intended usage. This warranty does not extend to anyone other than the Buyer. Any model or sample furnished to Buyer is merely illustrative of the general type and quality of goods and does not represent that any Product will conform to such model or sample. NO OTHER WARRANTIES, EXPRESS OR IMPLIED, ARE GRANTED INCLUDING WITHOUT LIMITATION, IMPLIED WARRANTIES OF MERCHANTABILITY, FITNESS FOR ANY PARTICULAR PURPOSE, OR NON-INFRINGEMENT. BUYER'S EXCLUSIVE REMEDY FOR NON-CONFORMING PRODUCTS DURING THE WARRANTY PERIOD IS LIMITED TO REPAIR, REPLACEMENT OF OR REFUND FOR THE NON-CONFORMING PRODUCT(S) AT SELLER'S SOLE OPTION. THERE IS NO OBLIGATION TO REPAIR, REPLACE OR REFUND FOR PRODUCTS AS THE RESULT OF (I) ACCIDENT, DISASTER OR EVENT OF FORCE MAJEURE, (II) MISUSE, FAULT OR NEGLIGENCE OF OR BY BUYER, (III) USE OF THE PRODUCTS IN A MANNER FOR WHICH THEY WERE NOT DESIGNED, OR (IV) IMPROPER STORAGE AND HANDLING OF THE PRODUCTS. Unless otherwise expressly stated on the Product or in the documentation accompanying the Product, the Product is intended for research only and is not to be used for any other purpose, including without limitation, unauthorized commercial uses, in vitro diagnostic uses, ex vivo or in vivo therapeutic uses, or any type of consumption by or application to human or animals.