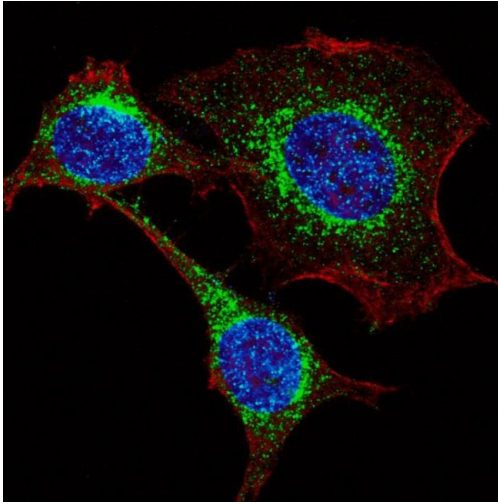


IFITM3 Polyclonal Antibody

Product Details	
Size	400 µL
Species Reactivity	Human, Mouse
Published Species	Human
Host/Isotope	Rabbit / IgG
Class	Polyclonal
Type	Antibody
Conjugate	Unconjugated
Immunogen	KLH conjugated synthetic peptide between 1-30 amino acids from the N-terminal region of human Interferon-inducible protein (IFITM3)
Form	Liquid
Concentration	0.5 mg/mL
Purification	Protein A, Affinity chromatography
Storage buffer	PBS
Contains	0.09% sodium azide
Storage Conditions	-20° C, Avoid Freeze/Thaw Cycles
RRID	AB_2122098

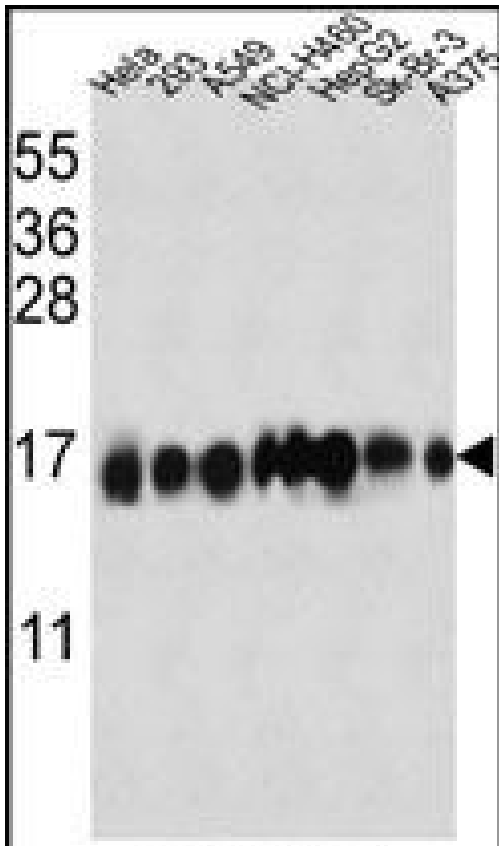
Applications	Tested	Dilution	Published
Western Blot (WB)	✓	1:1000	1 Publication
Immunocytochemistry (ICC)	✓	1:100-1:500	
Immunofluorescence (IF)	✓	1:100-1:500	

Product Images For IFITM3 Polyclonal Antibody



IFITM3 Antibody (PA5-11274) in IF

Immunofluorescent analysis of HeLa cells stained with an IFITM3 polyclonal antibody (Product # PA5-11274). HeLa cells were fixed with 4% PFA (20 min), permeabilized with Triton X-100 (0.2%, 30 min), then incubated with an IFITM3 polyclonal antibody (Product # PA5-11274) (1:200, 2 hr at room temperature). Primary antibody detected by fluor-conjugated donkey anti-rabbit secondary antibody (green) was used (1:1000, 1hr). Cytoplasmic actin was counterstained with red dye conjugated phalloidin (5.25 μ M, 25 min). Nuclei were counterstained with Hoechst 33342 (blue) (10 μ g/mL, 3 min)



IFITM3 Antibody (PA5-11274) in WB

Western blot analysis using an IFITM3 polyclonal antibody (Product # PA5-11274) in HeLa, 293, A549, NCI-H460, HepG2, Sk-Br-3, A375 cell lysates (35 μ g per lane).

[View more figures on thermofisher.com](https://www.thermofisher.com)

Western Blot (1)

Journal of virology

Constitutively Expressed IFITM3 Protein in Human Endothelial Cells Poses an Early Infection Block to Human Influenza Viruses.

"Published figure using IFITM3 polyclonal antibody (Product # PA5-11274) in Western Blot"

Authors: Sun X,Zeng H,Kumar A,Belser JA,Maines TR,Tumpey TM

Species
Human
Not Applicable

Dilution
Not Cited
Not Cited

Year
2016

For Research Use Only. Not for use in diagnostic procedures. Not for resale without express authorization. Products are warranted to operate or perform substantially in conformance with published Product specifications in effect at the time of sale, as set forth in the Production documentation, specifications and/or accompanying package inserts ("Documentation"). No claim of suitability for use in applications regulated by FDA is made. The warranty provided herein is valid only when used by properly trained individuals. Unless otherwise stated in the Documentation, this warranty is limited to one year from date of shipment when the Product is subjected to normal, proper and intended usage. This warranty does not extend to anyone other than the Buyer. Any model or sample furnished to Buyer is merely illustrative of the general type and quality of goods and does not represent that any Product will conform to such model or sample. NO OTHER WARRANTIES, EXPRESS OR IMPLIED, ARE GRANTED INCLUDING WITHOUT LIMITATION, IMPLIED WARRANTIES OF MERCHANTABILITY, FITNESS FOR ANY PARTICULAR PURPOSE, OR NON INFRINGEMENT. BUYER'S EXCLUSIVE REMEDY FOR NON-CONFORMING PRODUCTS DURING THE WARRANTY PERIOD IS LIMITED TO REPAIR, REPLACEMENT OF OR REFUND FOR THE NON-CONFORMING PRODUCT(S) AT SELLER'S SOLE OPTION. THERE IS NO OBLIGATION TO REPAIR, REPLACE OR REFUND FOR PRODUCTS AS THE RESULT OF (I) ACCIDENT, DISASTER OR EVENT OF FORCE MAJEURE, (II) MISUSE, FAULT OR NEGLIGENCE OF OR BY BUYER, (III) USE OF THE PRODUCTS IN A MANNER FOR WHICH THEY WERE NOT DESIGNED, OR (IV) IMPROPER STORAGE AND HANDLING OF THE PRODUCTS. Unless otherwise expressly stated on the Product or in the documentation accompanying the Product, the Product is intended for research only and is not to be used for any other purpose, including without limitation, unauthorized commercial uses, in vitro diagnostic uses, ex vivo or in vivo therapeutic uses, or any type of consumption by or application to human or animals.