

CLIF Polyclonal Antibody

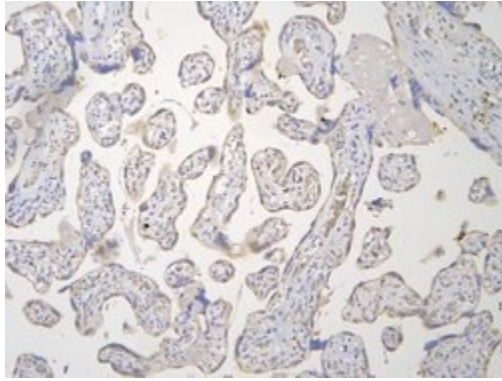
Product Details	
Size	100 µg
Species Reactivity	Human, Mouse, Rat
Host/Isotype	Rabbit / IgG
Class	Polyclonal
Type	Antibody
Conjugate	Unconjugated
Immunogen	E.coli-derived human ARNTL2 recombinant protein (Position: E461-T575).
Form	Lyophilized
Concentration	500 µg/mL
Purification	Affinity chromatography
Storage buffer	0.2mg sodium phosphate with 0.9mg NaCl, 4mg trehalose
Contains	0.05mg sodium azide
Storage Conditions	Store at 4°C short term. For long term storage, store at -20°C, avoiding freeze/thaw cycles.
RRID	AB_2884840

Applications	Tested Dilution	Publications
ELISA (ELISA)	0.1-0.5 µg/mL	-
Flow Cytometry (Flow)	1-3 µg/1x10 ⁶ cells	-
Immunohistochemistry (Paraffin) (IHC (P))	0.5-1 µg/mL	-
Western Blot (WB)	0.1-0.5 µg/mL	-

Product Specific Information

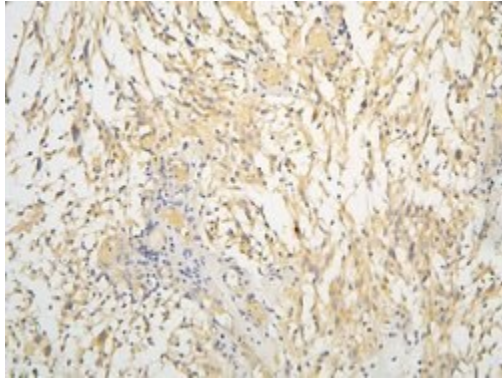
Add 0.2 mL of distilled water will yield a concentration of 500 µg/mL.

Product Images For CLIF Polyclonal Antibody



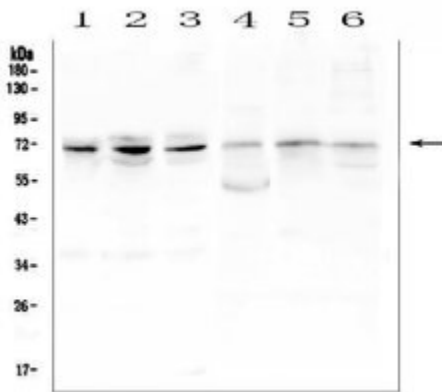
CLIF Antibody (PA5-114384) in IHC (P)

Immunohistochemistry analysis of CLIF in paraffin-embedded human placenta tissue. Antigen retrieval was performed with citrate buffer (pH6, 20 min). Samples were blocked with 10% goat serum and incubated in CLIF polyclonal antibody (Product # PA5-114384) at a dilution of 1 µg/mL (overnight, 4°C), followed by biotinylated goat anti-rabbit IgG (30 min, 37°C) and Streptavidin-Biotin-Complex (SABC) with DAB.



CLIF Antibody (PA5-114384) in IHC (P)

Immunohistochemistry analysis of CLIF in paraffin-embedded human glioma tissue. Antigen retrieval was performed with citrate buffer (pH6, 20 min). Samples were blocked with 10% goat serum and incubated in CLIF polyclonal antibody (Product # PA5-114384) at a dilution of 1 µg/mL (overnight, 4°C), followed by biotinylated goat anti-rabbit IgG (30 min, 37°C) and Streptavidin-Biotin-Complex (SABC) with DAB.



CLIF Antibody (PA5-114384) in WB

Western blot analysis of CLIF in the following samples: Lane 1: human PC-3 whole cell lysates, Lane 2: human A549 whole cell lysates, Lane 3: human HepG2 whole cell lysates, Lane 4: rat ovary tissue lysates, Lane 5: mouse lung tissue lysates, Lane 6: mouse testis tissue lysates. Samples consisting of 50 µg (reducing conditions) of protein was separated with 5-20% SDS-PAGE gel (70V, Stacking gel; 90V, Resolving gel; 2-3 hrs.), transferred to a Nitrocellulose membrane (150mA, 50-90 min) and washed with TBS-0.1% Tween (3 times, 5 minutes/wash) and blocked with 5% Non-fat Milk/TBS (1.5 hrs., room temperature). The membrane was incubated in CLIF polyclonal antibody (Product # PA5-114384) at a dilution of 0.5 µg/mL (overnight, 4°C), followed by goat anti-rabbit IgG-HRP and chemiluminescence (ECL) with a dilution of 1:10,000 (1.5 hours, room temperature).

[View more figures on thermofisher.com](http://thermofisher.com)

For Research Use Only. Not for use in diagnostic procedures. Not for resale without express authorization. Products are warranted to operate or perform substantially in conformance with published Product specifications in effect at the time of sale, as set forth in the Production documentation, specifications and/or accompanying package inserts ("Documentation"). No claim of suitability for use in applications regulated by FDA is made. The warranty provided herein is valid only when used by properly trained individuals. Unless otherwise stated in the Documentation, this warranty is limited to one year from date of shipment when the Product is subjected to normal, proper and intended usage. This warranty does not extend to anyone other than the Buyer. Any model or sample furnished to Buyer is merely illustrative of the general type and quality of goods and does not represent that any Product will conform to such model or sample. NO OTHER WARRANTIES, EXPRESS OR IMPLIED, ARE GRANTED INCLUDING WITHOUT LIMITATION, IMPLIED WARRANTIES OF MERCHANTABILITY, FITNESS FOR ANY PARTICULAR PURPOSE, OR NON INFRINGEMENT. BUYER'S EXCLUSIVE REMEDY FOR NON-CONFORMING PRODUCTS DURING THE WARRANTY PERIOD IS LIMITED TO REPAIR, REPLACEMENT OF OR REFUND FOR THE NON-CONFORMING PRODUCT(S) AT SELLER'S SOLE OPTION. THERE IS NO OBLIGATION TO REPAIR, REPLACE OR REFUND FOR PRODUCTS AS THE RESULT OF (I) ACCIDENT, DISASTER OR EVENT OF FORCE MAJEURE, (II) MISUSE, FAULT OR NEGLIGENCE OF OR BY BUYER, (III) USE OF THE PRODUCTS IN A MANNER FOR WHICH THEY WERE NOT DESIGNED, OR (IV) IMPROPER STORAGE AND HANDLING OF THE PRODUCTS. Unless otherwise expressly stated on the Product or in the documentation accompanying the Product, the Product is intended for research only and is not to be used for any other purpose, including without limitation, unauthorized commercial uses, in vitro diagnostic uses, ex vivo or in vivo therapeutic uses, or any type of consumption by or application to human or animals.