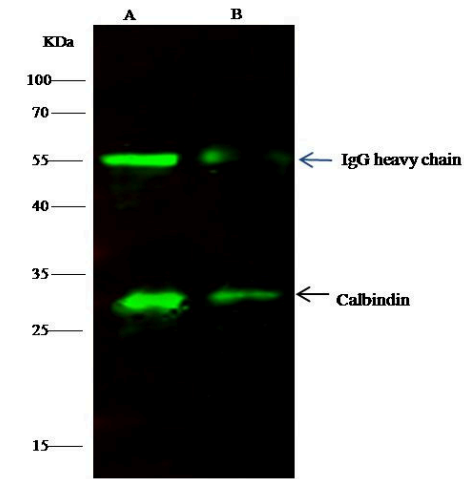


# Calbindin Polyclonal Antibody

Product Details	
Size	100 µL
Species Reactivity	Human
Host/Isotype	Rabbit / IgG
Class	Polyclonal
Type	Antibody
Conjugate	Unconjugated
Immunogen	A synthetic peptide corresponding to the N-terminus of the Human Calbindin
Form	Liquid
Purification	Antigen affinity chromatography, Protein A
Storage buffer	PBS
Contains	no preservative
Storage conditions	-20° C, Avoid Freeze/Thaw Cycles
RRID	AB_2902432

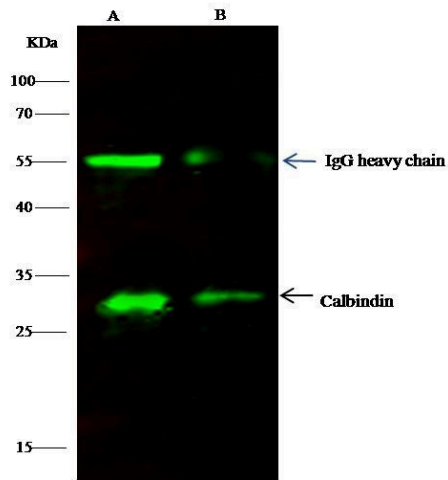
Applications	Tested Dilution	Publications
Western Blot (WB)	1:500-1:2,000	-
Immunohistochemistry (Paraffin) (IHC (P))	1:500-1:2,000	-
Immunocytochemistry (ICC/IF)	1:300-1:10,000	-
Immunoprecipitation (IP)	4-8 µL/mg of lysate	-

Product Images For Calbindin Polyclonal Antibody



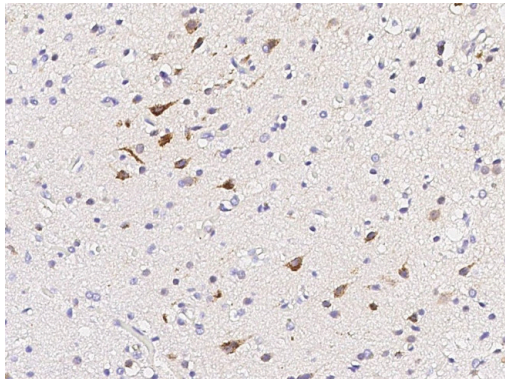
Calbindin Antibody (PA5-117824) in IP

Calbindin Immunoprecipitation using: Lane A: 0.5 mg HepG2 Whole Cell Lysate, Lane B: 0.5 mg 293T Whole Cell Lysate 4  $\mu$ L with Calbindin Polyclonal Antibody (Product # PA5-117824) and 60 g of Immunomagnetic beads Protein G. Primary antibody: Calbindin Polyclonal Antibody, at 1:100 dilution. Secondary antibody: Dylight 800-labeled antibody to rabbit IgG (H+L), at 1:5,000 dilution. Developed using the Odyssey technique. Performed under reducing conditions. Predicted band size: 30 kDa. Observed band size: 30 kDa.



Calbindin Antibody (PA5-117824) in IP

Immunoprecipitation of Calbindin in Lane A: 0.5 mg HepG2 Whole Cell lysate, Lane B: 0.5 mg 293T Whole Cell Lysate. Samples were treated with 60 g of immunomagnetic Protein G beads, incubated with polyclonal antibody (Product # PA5-117824) with a dilution of 1:100 , followed by Dylight 800-labeled antibody to rabbit IgG (H+L) using a dilution of 1:5,000. Assay was performed under reducing conditions. Predicted band size: 30 kDa, Observed band size: 30 kDa .



Calbindin Antibody (PA5-117824) in IHC (P)

Immunohistochemical staining of human Calbindin in human brain with Calbindin Polyclonal Antibody (Product # PA5-117824, 1:1,000, formalin-fixed paraffin embedded sections).

View more figures on [thermofisher.com](https://thermofisher.com)

For Research Use Only. Not for use in diagnostic procedures. Not for resale without express authorization. Products are warranted to operate or perform substantially in conformance with published Product specifications in effect at the time of sale, as set forth in the Production documentation, specifications and/or accompanying package inserts ("Documentation"). No claim of suitability for use in applications regulated by FDA is made. The warranty provided herein is valid only when used by properly trained individuals. Unless otherwise stated in the Documentation, this warranty is limited to one year from date of shipment when the Product is subjected to normal, proper and intended usage. This warranty does not extend to anyone other than the Buyer. Any model or sample furnished to Buyer is merely illustrative of the general type and quality of goods and does not represent that any Product will conform to such model or sample. NO OTHER WARRANTIES, EXPRESS OR IMPLIED, ARE GRANTED INCLUDING WITHOUT LIMITATION, IMPLIED WARRANTIES OF MERCHANTABILITY, FITNESS FOR ANY PARTICULAR PURPOSE, OR NON INFRINGEMENT. BUYER'S EXCLUSIVE REMEDY FOR NON-CONFORMING PRODUCTS DURING THE WARRANTY PERIOD IS LIMITED TO REPAIR, REPLACEMENT OF OR REFUND FOR THE NON-CONFORMING PRODUCT(S) AT SELLER'S SOLE OPTION. THERE IS NO OBLIGATION TO REPAIR, REPLACE OR REFUND FOR PRODUCTS AS THE RESULT OF (I) ACCIDENT, DISASTER OR EVENT OF FORCE MAJEURE, (II) MISUSE, FAULT OR NEGLIGENCE OF OR BY BUYER, (III) USE OF THE PRODUCTS IN A MANNER FOR WHICH THEY WERE NOT DESIGNED, OR (IV) IMPROPER STORAGE AND HANDLING OF THE PRODUCTS. Unless otherwise expressly stated on the Product or in the documentation accompanying the Product, the Product is intended for research only and is not to be used for any other purpose, including without limitation, unauthorized commercial uses, in vitro diagnostic uses, ex vivo or in vivo therapeutic uses, or any type of consumption by or application to human or animals.