

LRRTM1 Polyclonal Antibody

Product Details	
Size	100 µL
Species Reactivity	Human, Mouse, Rat
Host/Isotype	Rabbit / IgG
Class	Polyclonal
Type	Antibody
Conjugate	Unconjugated
Immunogen	Synthetic peptide within mouse LRRTM1 aa 320-360/522 (Extracellular)
Form	Liquid
Concentration	1 mg/mL
Purification	Affinity chromatography
Storage buffer	TBS, pH 7.4, with 50% glycerol
Contains	0.05% sodium azide
Storage conditions	Store at 4°C short term. For long term storage, store at -20°C, avoiding freeze/thaw cycles.
RRID	AB_2913514

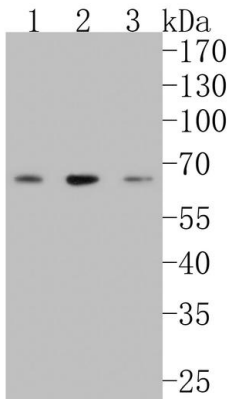
Applications	Tested Dilution	Publications
Western Blot (WB)	1:500	-
Immunocytochemistry (ICC/IF)	1:50-1:100	-
Flow Cytometry (Flow)	1:100-1:500	-

Product Specific Information

Positive Control: SH-SY5Y cell lysate, N2A cell lysate, rat brain tissue lysate, N2A, SH-SY5Y.

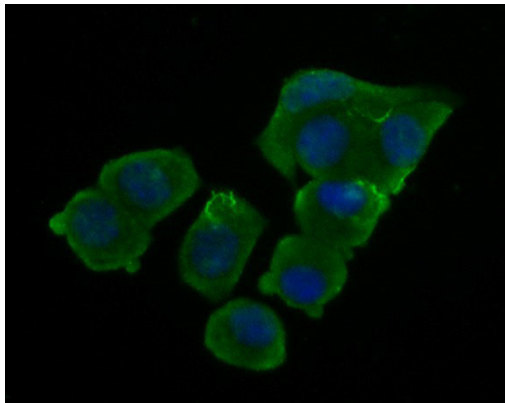
Subcellular Location: Cell membrane, postsynaptic cell membrane.

Product Images For LRRTM1 Polyclonal Antibody



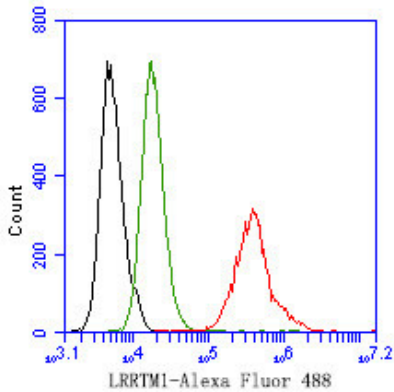
LRRTM1 Antibody (PA5-119942) in WB

Western blot analysis of LRRTM1 on different lysates. Proteins were transferred to a PVDF membrane and blocked with 5% NFDM/TBST for 1 hour at room temperature. LRRTM1 Polyclonal Antibody (Product # PA5-119942) at 1:500 was used in 5% NFDM/TBST at room temperature for 2 hours. Goat Anti-Rabbit IgG - HRP Secondary Antibody at 1:200,000 dilution was used for 1 hour at room temperature. Positive control: Lane 1: SH-SY5Y cell lysate. Lane 2: N2A cell lysate. Lane 3: Rat brain tissue lysate.



LRRTM1 Antibody (PA5-119942) in ICC/IF

Immunocytochemistry-Immunofluorescence analysis of LRRTM1 in N2A cells (green). Formalin fixed cells were permeabilized with 0.1% Triton X-100 in TBS for 10 minutes at room temperature and blocked with 10% negative goat serum for 15 minutes at room temperature. Cells were probed with LRRTM1 Polyclonal Antibody (Product # PA5-119942) at a dilution of 1:200 for 1 hour at room temperature, washed with PBS. Alexa Fluor 488 Goat anti-Rabbit IgG was used as the secondary antibody at 1:1,000 dilution. The nuclear counter stain is DAPI (blue).



LRRTM1 Antibody (PA5-119942) in Flow

Flow Cytometry analysis of LRRTM1 in SH-SY5Y cells using LRRTM1 Polyclonal Antibody (Product # PA5-119942) at 1 µg/mL (red) compared with Rabbit IgG, monoclonal - Isotype Control (green). After incubation of the primary antibody at 4°C for 1 hour, the cells were stained with a Alexa Fluor 488 conjugate-Goat anti-Rabbit IgG Secondary antibody at 1:1,000 dilution for 30 minutes at 4°C (dark incubation). Unlabelled sample was used as a control (cells without incubation with primary antibody; black).

For Research Use Only. Not for use in diagnostic procedures. Not for resale without express authorization. Products are warranted to operate or perform substantially in conformance with published Product specifications in effect at the time of sale, as set forth in the Production documentation, specifications and/or accompanying package inserts ("Documentation"). No claim of suitability for use in applications regulated by FDA is made. The warranty provided herein is valid only when used by properly trained individuals. Unless otherwise stated in the Documentation, this warranty is limited to one year from date of shipment when the Product is subjected to normal, proper and intended usage. This warranty does not extend to anyone other than the Buyer. Any model or sample furnished to Buyer is merely illustrative of the general type and quality of goods and does not represent that any Product will conform to such model or sample. NO OTHER WARRANTIES, EXPRESS OR IMPLIED, ARE GRANTED INCLUDING WITHOUT LIMITATION, IMPLIED WARRANTIES OF MERCHANTABILITY, FITNESS FOR ANY PARTICULAR PURPOSE, OR NON-INFRINGEMENT. BUYER'S EXCLUSIVE REMEDY FOR NON-CONFORMING PRODUCTS DURING THE WARRANTY PERIOD IS LIMITED TO REPAIR, REPLACEMENT OF OR REFUND FOR THE NON-CONFORMING PRODUCT(S) AT SELLER'S SOLE OPTION. THERE IS NO OBLIGATION TO REPAIR, REPLACE OR REFUND FOR PRODUCTS AS THE RESULT OF (i) ACCIDENT, DISASTER OR EVENT OF FORCE MAJEURE, (ii) MISUSE, FAULT OR NEGLIGENCE OF OR BY BUYER, (iii) USE OF THE PRODUCTS IN A MANNER FOR WHICH THEY WERE NOT DESIGNED, OR (iv) IMPROPER STORAGE AND HANDLING OF THE PRODUCTS. Unless otherwise expressly stated on the Product or in the documentation accompanying the Product, the Product is intended for research only and is not to be used for any other purpose, including without limitation, unauthorized commercial uses, in vitro diagnostic uses, ex vivo or in vivo therapeutic uses, or any type of consumption by or application to human or animals.