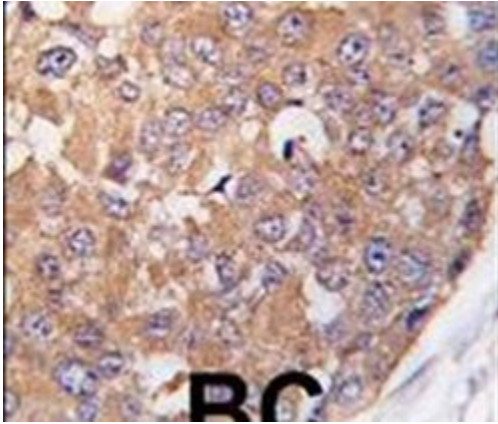


# PLK2 Polyclonal Antibody

Product Details	
Size	400 µL
Species Reactivity	Human, Mouse, Rat
Published Species	Mouse
Host/Isotope	Rabbit / IgG
Class	Polyclonal
Type	Antibody
Conjugate	Unconjugated
Immunogen	KLH conjugated synthetic peptide between 375-406 amino acids from the C-terminal region of human PLK2 (SNK)
Form	Liquid
Concentration	Lot-specific
Purification	Protein G
Storage buffer	PBS
Contains	0.09% sodium azide
Storage Conditions	-20° C, Avoid Freeze/Thaw Cycles
RRID	AB_2167742

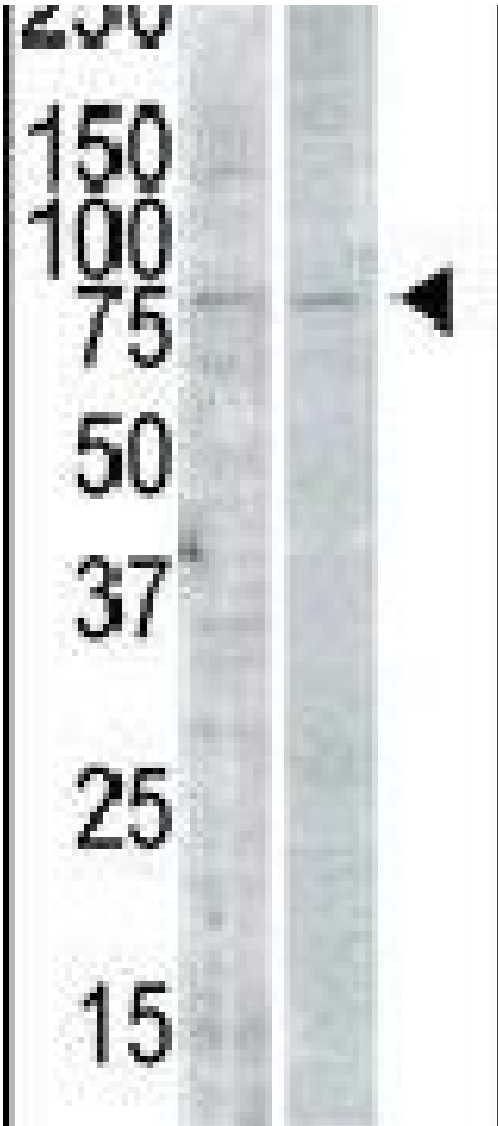
Applications	Tested	Dilution	Published
Western Blot (WB)	✓	1:1000	1 Publication
Immunohistochemistry (Paraffin) (IHC (P))	✓	1:50-1:100	

## Product Images For PLK2 Polyclonal Antibody



### PLK2 Antibody (PA5-14094) in IHC

Immunohistochemical analysis of formalin-fixed, paraffin-embedded human breast carcinoma tissue using a PLK2 polyclonal antibody (Product # PA5-14094), followed by HRP-conjugated secondary antibody and DAB staining.



### PLK2 Antibody (PA5-14094) in WB

Western blot analysis of PLK2 using a PLK2 polyclonal antibody (Product # PA5-14094) in PMA-treated Pam212 cell lysate (lane 1) and rat testis tissue lysate (lane 2).

[View more figures on thermofisher.com](https://www.thermofisher.com)

## Western Blot (1)

The Journal of neuroscience : the official journal of the Society for Neuroscience

### Opposing action of nuclear factor B and Polo-like kinases determines a homeostatic end point for excitatory synaptic adaptation.

"PA5-14094 was used in western blot to study excitory synaptic homeostatic end point adaptation and the roles played by NFkB and Polo-like kinases"

Authors: Mihalas AB,Araki Y,Huganir RL,Meffert MK

**Species**  
Mouse

**Dilution**  
Not Cited

**Year**  
2013

For Research Use Only. Not for use in diagnostic procedures. Not for resale without express authorization. Products are warranted to operate or perform substantially in conformance with published Product specifications in effect at the time of sale, as set forth in the Production documentation, specifications and/or accompanying package inserts ("Documentation"). No claim of suitability for use in applications regulated by FDA is made. The warranty provided herein is valid only when used by properly trained individuals. Unless otherwise stated in the Documentation, this warranty is limited to one year from date of shipment when the Product is subjected to normal, proper and intended usage. This warranty does not extend to anyone other than the Buyer. Any model or sample furnished to Buyer is merely illustrative of the general type and quality of goods and does not represent that any Product will conform to such model or sample. NO OTHER WARRANTIES, EXPRESS OR IMPLIED, ARE GRANTED INCLUDING WITHOUT LIMITATION, IMPLIED WARRANTIES OF MERCHANTABILITY, FITNESS FOR ANY PARTICULAR PURPOSE, OR NON INFRINGEMENT. BUYER'S EXCLUSIVE REMEDY FOR NON-CONFORMING PRODUCTS DURING THE WARRANTY PERIOD IS LIMITED TO REPAIR, REPLACEMENT OF OR REFUND FOR THE NON-CONFORMING PRODUCT(S) AT SELLER'S SOLE OPTION. THERE IS NO OBLIGATION TO REPAIR, REPLACE OR REFUND FOR PRODUCTS AS THE RESULT OF (I) ACCIDENT, DISASTER OR EVENT OF FORCE MAJEURE, (II) MISUSE, FAULT OR NEGLIGENCE OF OR BY BUYER, (III) USE OF THE PRODUCTS IN A MANNER FOR WHICH THEY WERE NOT DESIGNED, OR (IV) IMPROPER STORAGE AND HANDLING OF THE PRODUCTS. Unless otherwise expressly stated on the Product or in the documentation accompanying the Product, the Product is intended for research only and is not to be used for any other purpose, including without limitation, unauthorized commercial uses, in vitro diagnostic uses, ex vivo or in vivo therapeutic uses, or any type of consumption by or application to human or animals.