

EphA2 Polyclonal Antibody

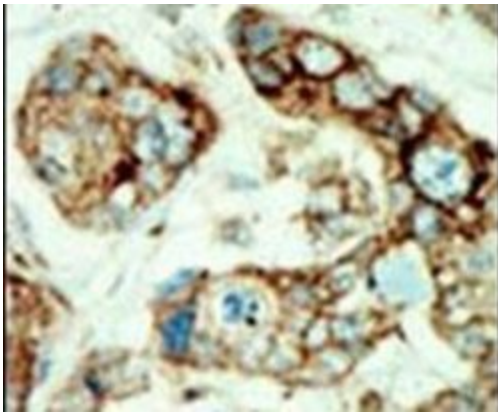
Product Details	
Size	400 µL
Species Reactivity	Human, Mouse
Published Species	Mouse
Host/Isotype	Rabbit / IgG
Class	Polyclonal
Type	Antibody
Conjugate	Unconjugated
Immunogen	KLH conjugated synthetic peptide between 30-60 amino acids from the N-terminal region of human EphA2
Form	Liquid
Concentration	Lot Specific
Purification	Size-exclusion - Dialysis, Ammonium sulfate precipitation
Storage buffer	PBS
Contains	0.09% sodium azide
Storage Conditions	-20° C, Avoid Freeze/Thaw Cycles
RRID	AB_2099079

Applications	Tested Dilution	Publications
Western Blot (WB)	1:1000	-
Immunohistochemistry (Paraffin) (IHC (P))	1:50-1:100	1 Publication
Flow Cytometry (Flow)	1:10-1:50	-

Product Specific Information

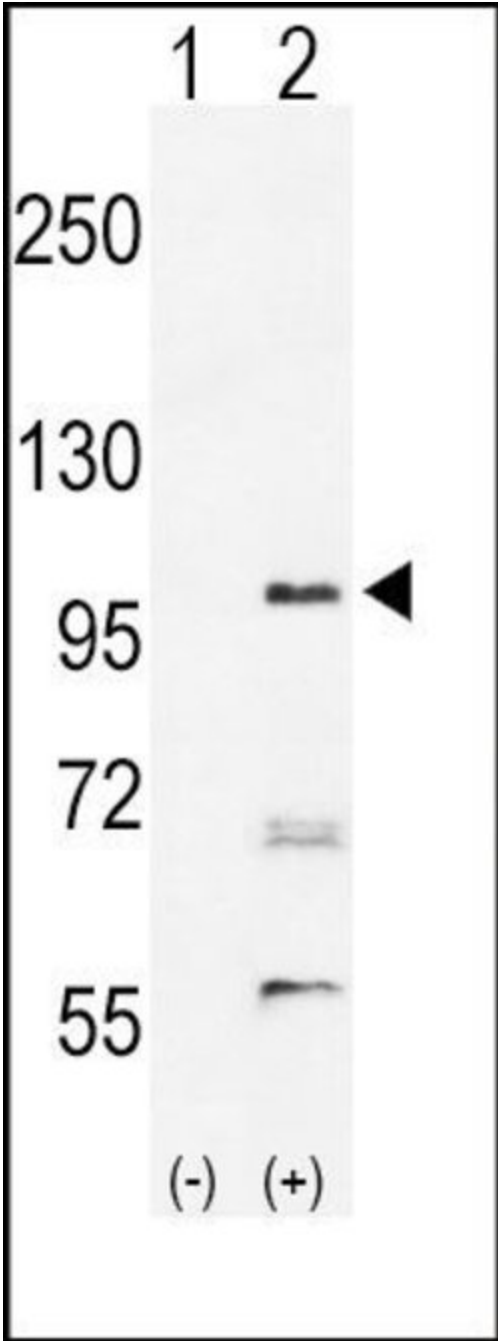
This antibody is predicted to react with non-human primate based on sequence homology.

Product Images For EphA2 Polyclonal Antibody



EphA2 Antibody (PA5-14574) in IHC

Immunohistochemical analysis of formalin-fixed, paraffin-embedded human cancer tissue using an EphA2 polyclonal antibody (Product # PA5-14574), followed by HRP-conjugated secondary antibody and AEC staining.

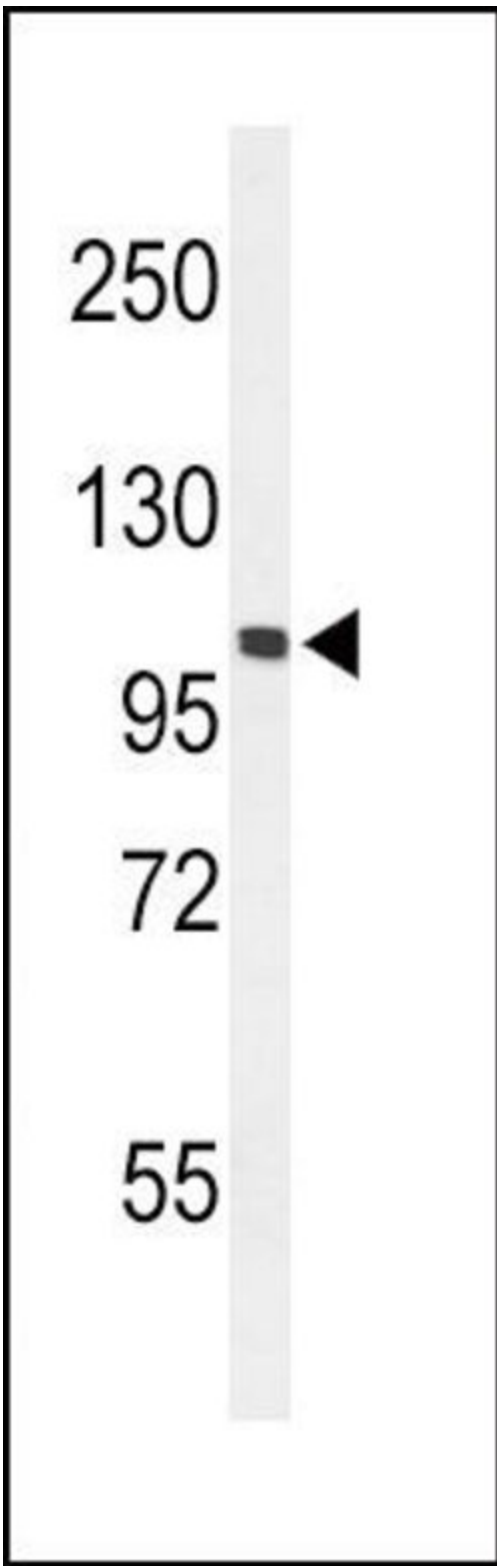


EphA2 Antibody (PA5-14574) in WB

Western blot analysis of EPHA2 (arrow) using an EphA2 polyclonal antibody (Product # PA5-14574) in 293 cell lysates (2 µg/lane) either nontransfected (Lane 1) or transiently transfected with the EPHA2 gene (Lane 2)

EphA2 Antibody (PA5-14574) in WB

Western blot analysis using an EphA2 polyclonal antibody (Product # PA5-14574) in mouse NIH-3T3 cell lysates (35 µg per lane).



[View more figures on thermofisher.com](https://www.thermofisher.com)

Immunohistochemistry (Paraffin) (1)

Clinical science (London, England : 1979)

Inhibition of EphA2/EphrinA1 signal attenuates lipopolysaccharide-induced lung injury.

"PA5-14574 was used in immunohistochemistry - paraffin section and western blot to assess the role of EphA2 signaling in mice with lipopolysaccharide-induced lung injury"

Authors: Hong JY,Shin MH,Douglas IS,Chung KS,Kim EY,Jung JY,Kang YA,Kim SK,Chang J,Kim YS,Park MS

Species
Mouse

Dilution
Not Cited

Year
2016

For Research Use Only. Not for use in diagnostic procedures. Not for resale without express authorization. Products are warranted to operate or perform substantially in conformance with published Product specifications in effect at the time of sale, as set forth in the Production documentation, specifications and/or accompanying package inserts ("Documentation"). No claim of suitability for use in applications regulated by FDA is made. The warranty provided herein is valid only when used by properly trained individuals. Unless otherwise stated in the Documentation, this warranty is limited to one year from date of shipment when the Product is subjected to normal, proper and intended usage. This warranty does not extend to anyone other than the Buyer. Any model or sample furnished to Buyer is merely illustrative of the general type and quality of goods and does not represent that any Product will conform to such model or sample. NO OTHER WARRANTIES, EXPRESS OR IMPLIED, ARE GRANTED INCLUDING WITHOUT LIMITATION, IMPLIED WARRANTIES OF MERCHANTABILITY, FITNESS FOR ANY PARTICULAR PURPOSE, OR NON INFRINGEMENT. BUYER'S EXCLUSIVE REMEDY FOR NON-CONFORMING PRODUCTS DURING THE WARRANTY PERIOD IS LIMITED TO REPAIR, REPLACEMENT OF OR REFUND FOR THE NON-CONFORMING PRODUCT(S) AT SELLER'S SOLE OPTION. THERE IS NO OBLIGATION TO REPAIR, REPLACE OR REFUND FOR PRODUCTS AS THE RESULT OF (I) ACCIDENT, DISASTER OR EVENT OF FORCE MAJEURE, (II) MISUSE, FAULT OR NEGLIGENCE OF OR BY BUYER, (III) USE OF THE PRODUCTS IN A MANNER FOR WHICH THEY WERE NOT DESIGNED, OR (IV) IMPROPER STORAGE AND HANDLING OF THE PRODUCTS. Unless otherwise expressly stated on the Product or in the documentation accompanying the Product, the Product is intended for research only and is not to be used for any other purpose, including without limitation, unauthorized commercial uses, in vitro diagnostic uses, ex vivo or in vivo therapeutic uses, or any type of consumption by or application to human or animals.