

COX1 Polyclonal Antibody

Product Details

Size	500 µL
Species Reactivity	Human, Mouse
Published Species	Rat
Host/Isotype	Rabbit / IgG
Class	Polyclonal
Type	Antibody
Conjugate	Unconjugated
Immunogen	Synthetic peptide corresponding to C-terminal of human COX-1
Form	Liquid
Storage conditions	Store at 4°C short term. For long term storage, store at -20°C, avoiding freeze/thaw cycles.
RRID	AB_10982188

Applications	Tested Dilution	Publications
Western Blot (WB)	1-3 µg/mL	-
Immunohistochemistry (IHC)	-	1 Publication
Immunohistochemistry (Paraffin) (IHC (P))	1:25	1 Publication
Immunocytochemistry (ICC/IF)	2 µg/mL	-

Product Specific Information

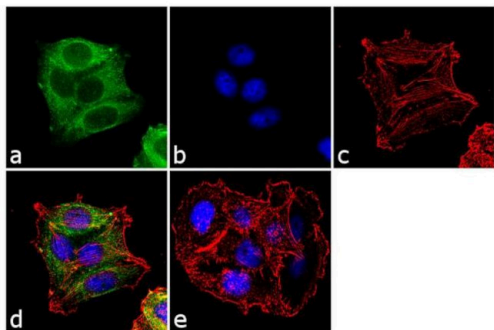
PA5-16318 targets COX-1 in IHC (P) applications and shows reactivity with Human samples.

The PA5-16318 immunogen is synthetic peptide corresponding to C-terminal of human COX-1.

Product Images For COX1 Polyclonal Antibody

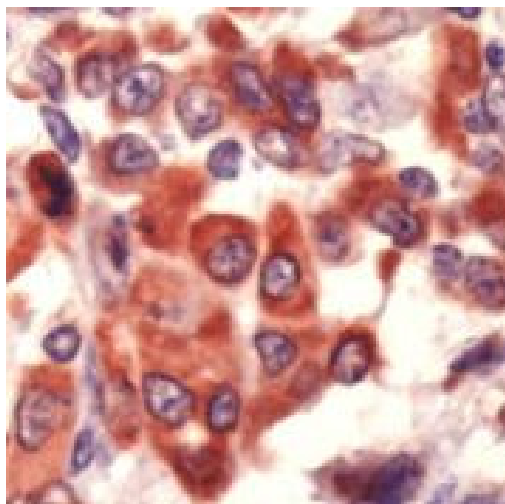
COX1 Antibody (PA5-16318) in ICC/IF

Immunofluorescence analysis of COX-1 was performed using 70% confluent log phase MCF-7 cells. The cells were fixed with 4% paraformaldehyde for 10 minutes, permeabilized with 0.1% Triton™ X-100 for 10 minutes, and blocked with 1% BSA for 1 hour at room temperature. The cells were labeled with COX-1 Rabbit Polyclonal Antibody (Product # PA5-16318) at 2µg/mL in 0.1% BSA and incubated for 3 hours at room temperature and then labeled with Goat anti-Rabbit IgG (H+L) Superclonal™ Secondary Antibody, Alexa Fluor® 488 conjugate (Product # A27034) a dilution of 1:2000 for 45 minutes at room temperature (Panel a: green). Nuclei (Panel b: blue) were stained with SlowFade® Gold Antifade Mountant with DAPI (Product # S36938). F-actin (Panel c: red) was stained with Alexa Fluor® 555 Rhodamine Phalloidin (Product # R415, 1:300). Panel d represents the merged image showing cytoplasmic localization. Panel e shows the no primary antibody control. The images were captured at 60X magnification.



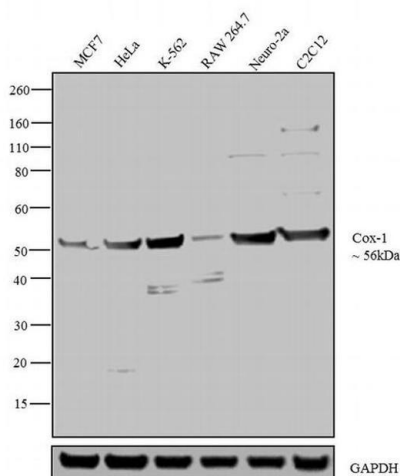
COX1 Antibody (PA5-16318) in IHC

FFPE human esophagus stained with anti-Cox-1 antibody using peroxidase conjugate and AEC chromogen. Note Cytoplasmic staining.



COX1 Antibody (PA5-16318) in WB

Western blot analysis was performed on membrane enriched extracts (30 µg lysate) of MCF7 (Lane 1), HeLa (Lane 2), K-562 (Lane 3), RAW 264.7 (Lane 4), Neuro-2a (Lane 5) and C2C12 (Lane 6). The blots were probed with Anti-Cox-1 Rabbit Polyclonal Antibody (Product # PA5-16318, 2 µg/mL) and detected by chemiluminescence using Goat anti-Rabbit IgG (H+L) Superclonal™ Secondary Antibody, HRP conjugate (Product # A27036, 0.4 µg/mL, 1:2500 dilution). A 56 kDa band corresponding to Cox-1 was observed across the cell lines tested. Known quantity of protein samples were electrophoresed using Novex® NuPAGE® 10 % Bis-Tris gel (Product # NP0302BOX), XCell SureLock™ Electrophoresis System (Product # EI0002) and Novex® Sharp Pre-Stained Protein Standard (Product # LC5800). Resolved proteins were then transferred onto a nitrocellulose membrane with iBlot® 2 Dry Blotting System (Product # IB21001). The membrane was probed with the relevant primary and secondary Antibody following blocking with 5 % skimmed milk. Chemiluminescent detection was performed using Pierce™ ECL Western Blotting Substrate (Product # 32106).



Immunohistochemistry (1)

Nitric oxide : biology and chemistry

Protective effects of nebivolol against cold restraint stress-induced gastric ulcer in rats: role of NO, HO-1, and COX-1,2.

"PA5-16318 was used in immunohistochemistry to study the protective mechanism of nebivolol in a rat gastric ulcer model"

Authors: Morsy MA,Heeba GH,Abdelwahab SA,Rofaeil RR

Year
2012

Species
Rat

Dilution
1:25

Immunohistochemistry (Paraffin) (1)

International journal of clinical and experimental pathology

Combined use of COX-1 and VEGF immunohistochemistry refines the histopathologic prognosis of renal cell carcinoma.

"PA5-16318 was used in immunohistochemistry - paraffin section to characterize the histopathologic prognosis of renal cell carcinoma by combined use of EGF and COX-1 immunohistochemistry"

Authors: Osman WM,Youssef NS

Year
2016

For Research Use Only. Not for use in diagnostic procedures. Not for resale without express authorization. Products are warranted to operate or perform substantially in conformance with published Product specifications in effect at the time of sale, as set forth in the Production documentation, specifications and/or accompanying package inserts ("Documentation"). No claim of suitability for use in applications regulated by FDA is made. The warranty provided herein is valid only when used by properly trained individuals. Unless otherwise stated in the Documentation, this warranty is limited to one year from date of shipment when the Product is subjected to normal, proper and intended usage. This warranty does not extend to anyone other than the Buyer. Any model or sample furnished to Buyer is merely illustrative of the general type and quality of goods and does not represent that any Product will conform to such model or sample. NO OTHER WARRANTIES, EXPRESS OR IMPLIED, ARE GRANTED INCLUDING WITHOUT LIMITATION, IMPLIED WARRANTIES OF MERCHANTABILITY, FITNESS FOR ANY PARTICULAR PURPOSE, OR NON INFRINGEMENT. BUYER'S EXCLUSIVE REMEDY FOR NON-CONFORMING PRODUCTS DURING THE WARRANTY PERIOD IS LIMITED TO REPAIR, REPLACEMENT OF OR REFUND FOR THE NON-CONFORMING PRODUCT(S) AT SELLER'S SOLE OPTION. THERE IS NO OBLIGATION TO REPAIR, REPLACE OR REFUND FOR PRODUCTS AS THE RESULT OF (I) ACCIDENT, DISASTER OR EVENT OF FORCE MAJEURE, (II) MISUSE, FAULT OR NEGLIGENCE OF OR BY BUYER, (III) USE OF THE PRODUCTS IN A MANNER FOR WHICH THEY WERE NOT DESIGNED, OR (IV) IMPROPER STORAGE AND HANDLING OF THE PRODUCTS. Unless otherwise expressly stated on the Product or in the documentation accompanying the Product, the Product is intended for research only and is not to be used for any other purpose, including without limitation, unauthorized commercial uses, in vitro diagnostic uses, ex vivo or in vivo therapeutic uses, or any type of consumption by or application to human or animals.