

Estrogen Receptor alpha Polyclonal Antibody

Product Details	
Size	500 µL
Species Reactivity	Hamster, Human, Mouse
Published Species	Human
Host/Isotope	Rabbit / IgG
Class	Polyclonal
Type	Antibody
Conjugate	Unconjugated
Immunogen	A synthetic peptide derived from the C-terminus of human estrogen receptor, alpha protein
Form	Liquid
Concentration	1 mg/mL
Purification	Protein A
Storage buffer	PBS, pH 7.4, with 0.2% BSA
Contains	0.09% sodium azide
Storage Conditions	4° C
RRID	AB_10983848

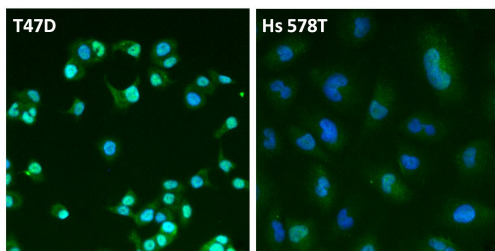
Applications	Tested	Dilution	Published
Immunocytochemistry (ICC)	✓	1:50-1:200	1 Publication
Immunofluorescence (IF)	✓	1:50-1:200	
Immunohistochemistry (Paraffin) (IHC (P))	✓	1:62.5-1:125	
Immunoprecipitation (IP)	✓	10 µg/mL	
Western Blot (WB)	✓	2.5-5 µg/mL	

Product Specific Information

PA5-16440 targets Estrogen Receptor in IF, IHC (P), IP, and WB applications and shows reactivity with mouse, Hamster, and Human samples.

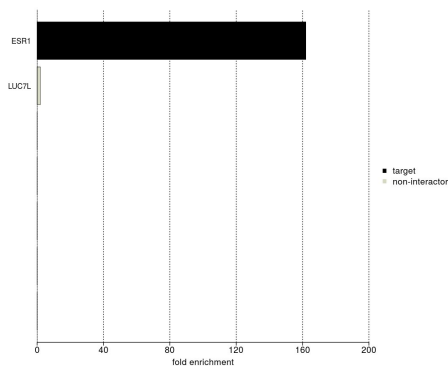
The PA5-16440 immunogen is a synthetic peptide derived from the C-terminus of human estrogen receptor, alpha protein.

Advanced Verification Data



Estrogen Receptor alpha Antibody (PA5-16440)

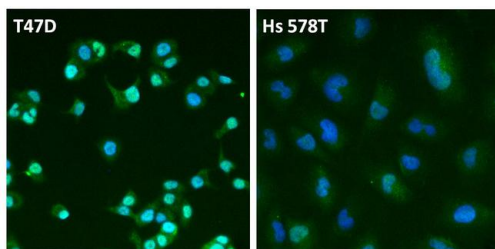
The specificity of anti-ER alpha polyclonal antibody (Product # PA5-16440) was demonstrated in Immunofluorescence analysis by the detection of endogenous Estrogen Receptor Alpha protein in T47D cells, but not in negative control line Hs578T which is not known to express Estrogen Receptor Alpha protein. Relative expression validation info.



Estrogen Receptor alpha Antibody (PA5-16440)

IP-MS enrichment of ESR1 (LFQ intensity): ESR1 was enriched 162-fold from MCF7 lysate compared to background proteins, using the optimized IP-MS workflow with Pierce MS-Compatible Magnetic IP Kit protein A/G (Product # 90409) and ESR1 antibody (Product # PA5-16440). The STRING database (www.string-db.org) was used to identify the protein interactor list. See more information on IP-MS verification of antibody selectivity. IP-MS validation info.

Product Images For Estrogen Receptor alpha Polyclonal Antibody



Estrogen Receptor alpha Antibody (PA5-16440) in IF

Immunofluorescent analysis of Estrogen Receptor (ER, green) in T47D and Hs 578T breast cancer cells. The cells were fixed with 4% paraformaldehyde for 15 min at room temp, permeabilized with 0.1% Triton X-100 for 15 min at room temp, and blocked with 0.3% BSA in PBS for at least 30 min at room temp. Cells were stained with an ER polyclonal antibody (Product # PA5-16440) at a dilution of 1:100 in blocking buffer overnight at 4C, and then incubated with a DyLight 488-conjugated goat anti-rabbit IgG secondary antibody (Product # 35552) at a dilution of 1:500 for at least 1 hour at room temp. Nuclei (blue) were stained with DAPI (Product # 62247). Images were taken on a Thermo Scientific ToxInsight Instrument at 20X magnification.

[View more figures on thermofisher.com](http://thermofisher.com)

Immunocytochemistry (1)

PloS one

ER-36-mediated rapid estrogen signaling positively regulates ER-positive breast cancer stem/progenitor cells.

"PA5-16440 was used in immunocytochemistry and western blot to study the modulation of ER-positive breast cancer stem/progenitor cell growth by ER-alpha36 rapid estrogen signaling"

Authors: Deng H,Zhang XT,Wang ML,Zheng HY,Liu LJ,Wang ZY

Species
Human

Dilution
Not Cited

Year
2015

For Research Use Only. Not for use in diagnostic procedures. Not for resale without express authorization. Products are warranted to operate or perform substantially in conformance with published Product specifications in effect at the time of sale, as set forth in the Production documentation, specifications and/or accompanying package inserts ("Documentation"). No claim of suitability for use in applications regulated by FDA is made. The warranty provided herein is valid only when used by properly trained individuals. Unless otherwise stated in the Documentation, this warranty is limited to one year from date of shipment when the Product is subjected to normal, proper and intended usage. This warranty does not extend to anyone other than the Buyer. Any model or sample furnished to Buyer is merely illustrative of the general type and quality of goods and does not represent that any Product will conform to such model or sample. NO OTHER WARRANTIES, EXPRESS OR IMPLIED, ARE GRANTED INCLUDING WITHOUT LIMITATION, IMPLIED WARRANTIES OF MERCHANTABILITY, FITNESS FOR ANY PARTICULAR PURPOSE, OR NON INFRINGEMENT. BUYER'S EXCLUSIVE REMEDY FOR NON-CONFORMING PRODUCTS DURING THE WARRANTY PERIOD IS LIMITED TO REPAIR, REPLACEMENT OF OR REFUND FOR THE NON-CONFORMING PRODUCT(S) AT SELLER'S SOLE OPTION. THERE IS NO OBLIGATION TO REPAIR, REPLACE OR REFUND FOR PRODUCTS AS THE RESULT OF (I) ACCIDENT, DISASTER OR EVENT OF FORCE MAJEURE, (II) MISUSE, FAULT OR NEGLIGENCE OF OR BY BUYER, (III) USE OF THE PRODUCTS IN A MANNER FOR WHICH THEY WERE NOT DESIGNED, OR (IV) IMPROPER STORAGE AND HANDLING OF THE PRODUCTS. Unless otherwise expressly stated on the Product or in the documentation accompanying the Product, the Product is intended for research only and is not to be used for any other purpose, including without limitation, unauthorized commercial uses, in vitro diagnostic uses, ex vivo or in vivo therapeutic uses, or any type of consumption by or application to human or animals.