

Ki-67 Polyclonal Antibody

Product Details	
Size	500 µL
Species Reactivity	Human, Rat
Published Species	Rat, Human, Mouse
Host/Isotype	Rabbit / IgG
Class	Polyclonal
Type	Antibody
Conjugate	Unconjugated
Immunogen	A synthetic peptide from the human Ki67 protein
Form	Liquid
Concentration	1 mg/mL
Purification	Protein A
Storage buffer	PBS, pH 7.4, with 0.2% BSA
Contains	0.09% sodium azide
Storage conditions	4° C
RRID	AB_10984590

Applications	Tested Dilution	Publications
Western Blot (WB)	-	1 Publication
Immunohistochemistry (IHC)	-	16 Publications
Immunohistochemistry (Paraffin) (IHC (P))	10-20 µg/mL	6 Publications
Immunohistochemistry (Frozen) (IHC (F))	-	1 Publication
Immunocytochemistry (ICC/IF)	1:100	1 Publication

Product Specific Information

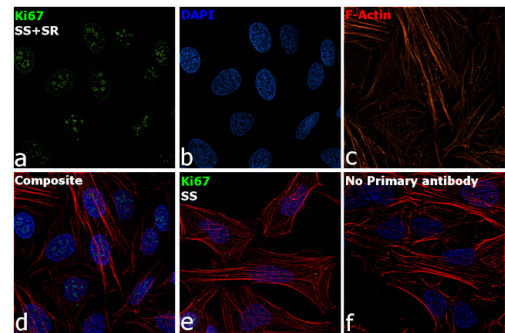
PA5-16446 targets Ki-67 in IHC (P) applications and shows reactivity with Rat and Human samples.

The PA5-16446 immunogen is a synthetic peptide from the human Ki67 protein.

Product Images For Ki-67 Polyclonal Antibody

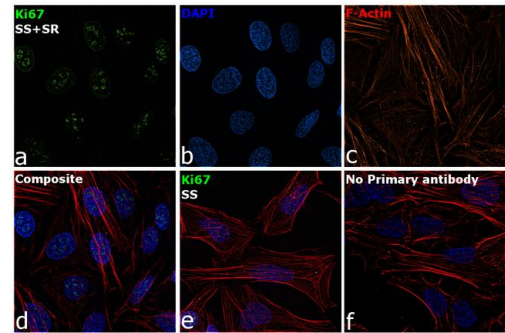
Ki-67 Antibody (PA5-16446) in ICC/IF

Immunofluorescence analysis of Ki67 was performed using 70% confluent log phase HeLa cells serum starved for 36 Hrs followed by serum release for 6 Hrs. The cells were fixed with 4% Paraformaldehyde for 10 minutes, permeabilized with 0.1% Triton™ X-100 for 10 minutes, and blocked with 2% BSA for 10 minutes at room temperature. The cells were labeled with Ki-67 Polyclonal Antibody (Product # PA5-16446) at 1:100 dilution in 0.1% BSA, incubated at 4 degree celsius overnight and then labeled with Goat anti-Rabbit IgG (Heavy Chain) Superclonal™ Secondary Antibody, Alexa Fluor® 488 conjugate (Product # A27034, 1:2000 dilution) for 45 minutes at room temperature (Panel a: Green). Nuclei (Panel b: Blue) were stained with SlowFade® Gold Antifade Mountant with DAPI (Product # S36938). F-actin (Panel c: Red) was stained with Rhodamine Phalloidin (Product # R415, 1:300). Panel d represents the merged image showing nuclear localization. Panel e represents serum starved cells with reduced signal. Panel f represents control cells with no primary antibody to assess background. The images were captured at 60X magnification.



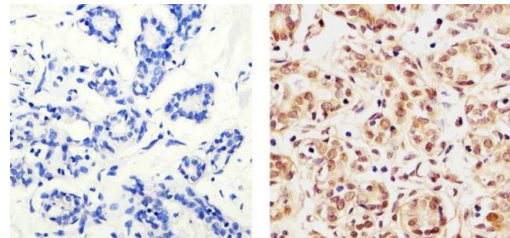
Ki-67 Antibody (PA5-16446)

Altered expression of target protein upon cell treatment demonstrates antibody specificity. Immunofluorescence analysis using Anti-Ki-67 Polyclonal Antibody (Product # PA5-16446) shows increased expression of proteins upon serum starvation followed by serum release in HeLa cells. {TM}



Ki-67 Antibody (PA5-16446) in IHC (P)

Immunohistochemistry analysis of Ki-67 showing staining in the nucleus of paraffin-embedded human breast tissue (right) compared to a negative control without primary antibody (left). To expose target proteins, antigen retrieval was performed using 10mM sodium citrate (pH 6.0), microwaved for 8-15 min. Following antigen retrieval, tissues were blocked in 3% H2O2-methanol for 15 min at room temperature, washed with ddH2O and PBS, and then probed with a Ki-67 Rabbit Polyclonal Antibody (Product # PA5-16446) diluted in 3% BSA-PBS at a dilution of 1:20 for 1 hour at 37°C in a humidified chamber. Tissues were washed extensively in PBST and detection was performed using an HRP-conjugated secondary antibody followed by colorimetric detection using a DAB kit. Tissues were counterstained with hematoxylin and dehydrated with ethanol and xylene to prep for mounting.



View more figures on thermofisher.com

Western Blot (1)

<p>Oncology letters</p> <p>Ki-67 is overexpressed in human laryngeal carcinoma and contributes to the proliferation of HEP2 cells.</p> <p>"Published figure using Ki-67 polyclonal antibody (Product # PA5-16446) in Western Blot"</p> <p>Authors: Bai Y,Shao Y,Li H,Xue W,Quan F,Wu S</p>	<p>Year</p> <p>2016</p>
---	-------------------------

Immunohistochemistry (16)

<p>Frontiers in oncology</p> <p>MELK Inhibition Effectively Suppresses Growth of Glioblastoma and Cancer Stem-Like Cells by Blocking AKT and FOXM1 Pathways.</p> <p>"Published figure using Ki-67 polyclonal antibody (Product # PA5-16446) in Immunohistochemistry"</p> <p>Authors: Zhang X,Wang J,Wang Y,Liu G,Li H,Yu J,Wu R,Liang J,Yu R,Liu X</p>	<p>Year</p> <p>2022</p> <p>Species</p> <p>Human</p> <p>Dilution</p> <p>1:150</p>
---	--

<p>Oncology letters</p> <p>Curative effect of methotrexate combined with teniposide in the treatment of primary central nervous system lymphoma.</p> <p>"PA5-16446 was used in Immunohistochemistry to investigate the curative effect of high-dose methotrexate (HD-MTX) combined with teniposide (Vm26) vs. HD-MTX alone in the treatment of primary central nervous system lymphoma (PCNSL), in order to provide data for assisting decisions associated with clinical treatment."</p> <p>Authors: Wang YX,Huang Y,Xu XP,Chen BB,Lin ZG,Ma Y,Ding TL,Wang Q</p>	<p>Year</p> <p>2020</p> <p>Species</p> <p>Human</p> <p>Dilution</p> <p>1:100</p>
---	--

View more IHC references on thermofisher.com

Immunohistochemistry (Paraffin) (6)

<p>Endocrine-related cancer</p> <p>Inhibition of STAT3 activity delays obesity-induced thyroid carcinogenesis in a mouse model.</p> <p>"PA5-16446 was used in immunohistochemistry - paraffin section to study the delay of obesity-induced thyroid carcinogenesis in a mouse model by inhibition of STAT3 activity"</p> <p>Authors: Park JW,Han CR,Zhao L,Willingham MC,Cheng SY</p>	<p>Year</p> <p>2016</p> <p>Dilution</p> <p>1:300</p>
--	--

View more IHC (P) references on thermofisher.com

More applications with references on thermofisher.com

- IHC (F) (1)
- ICC/IF (1)

For Research Use Only. Not for use in diagnostic procedures. Not for resale without express authorization. Products are warranted to operate or perform substantially in conformance with published Product specifications in effect at the time of sale, as set forth in the Production documentation, specifications and/or accompanying package inserts ("Documentation"). No claim of suitability for use in applications regulated by FDA is made. The warranty provided herein is valid only when used by properly trained individuals. Unless otherwise stated in the Documentation, this warranty is limited to one year from date of shipment when the Product is subjected to normal, proper and intended usage. This warranty does not extend to anyone other than the Buyer. Any model or sample furnished to Buyer is merely illustrative of the general type and quality of goods and does not represent that any Product will conform to such model or sample. NO OTHER WARRANTIES, EXPRESS OR IMPLIED, ARE GRANTED INCLUDING WITHOUT LIMITATION, IMPLIED WARRANTIES OF MERCHANTABILITY, FITNESS FOR ANY PARTICULAR PURPOSE, OR NON INFRINGEMENT. BUYER'S EXCLUSIVE REMEDY FOR NON-CONFORMING PRODUCTS DURING THE WARRANTY PERIOD IS LIMITED TO REPAIR, REPLACEMENT OF OR REFUND FOR THE NON-CONFORMING PRODUCT(S) AT SELLER'S SOLE OPTION. THERE IS NO OBLIGATION TO REPAIR, REPLACE OR REFUND FOR PRODUCTS AS THE RESULT OF (i) ACCIDENT, DISASTER OR EVENT OF FORCE MAJEURE, (ii) MISUSE, FAULT OR NEGLIGENCE OF OR BY BUYER, (iii) USE OF THE PRODUCTS IN A MANNER FOR WHICH THEY WERE NOT DESIGNED, OR (iv) IMPROPER STORAGE AND HANDLING OF THE PRODUCTS. Unless otherwise expressly stated on the Product or in the documentation accompanying the Product, the Product is intended for research only and is not to be used for any other purpose, including without limitation, unauthorized commercial uses, in vitro diagnostic uses, ex vivo or in vivo therapeutic uses, or any type of consumption by or application to human or animals.